

Table of contents

Table of contents	1
About CSS Image Gallery 2.....	2
Features in Detail.....	3
Reference: CSS Image Gallery 2 Designs.....	14
The Basics: Creating a Responsive CSS Image Gallery	18
Advanced: CSS Image Gallery from Dynamic Image Source.....	26
Advanced: Using CSS Image Gallery Control Behaviors	36
Video: Creating a Responsive CSS Image Gallery	42
Video: CSS Image Gallery from Dynamic Image Source	42
Video: Using CSS Image Gallery Control Behaviors.....	42

About CSS Image Gallery 2

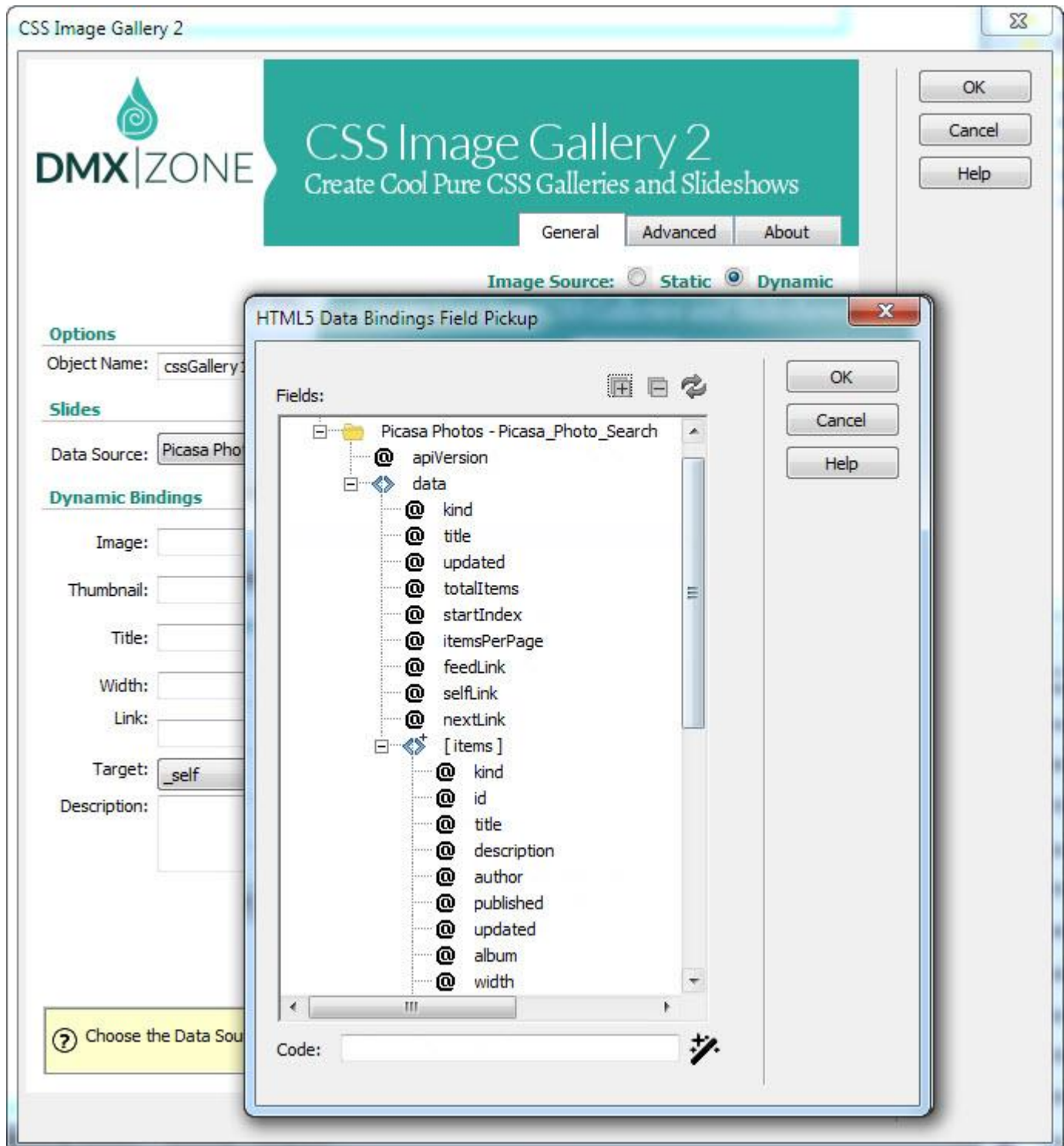


The amazing [CSS Image Gallery 2](#) extension is all you need to create stunning responsive and pure CSS galleries. It comes with full [HTML5 Data Bindings](#) integration and so you can supply your galleries directly from dynamic sources. For optimal performance on mobile devices you can use native gestures and slide through the images with ease. Choose one of the numerous fully customizable themes and also let your users enjoy the minimalistic scrollbar which appears on hover in the thumbnails list for quick and easy navigation.

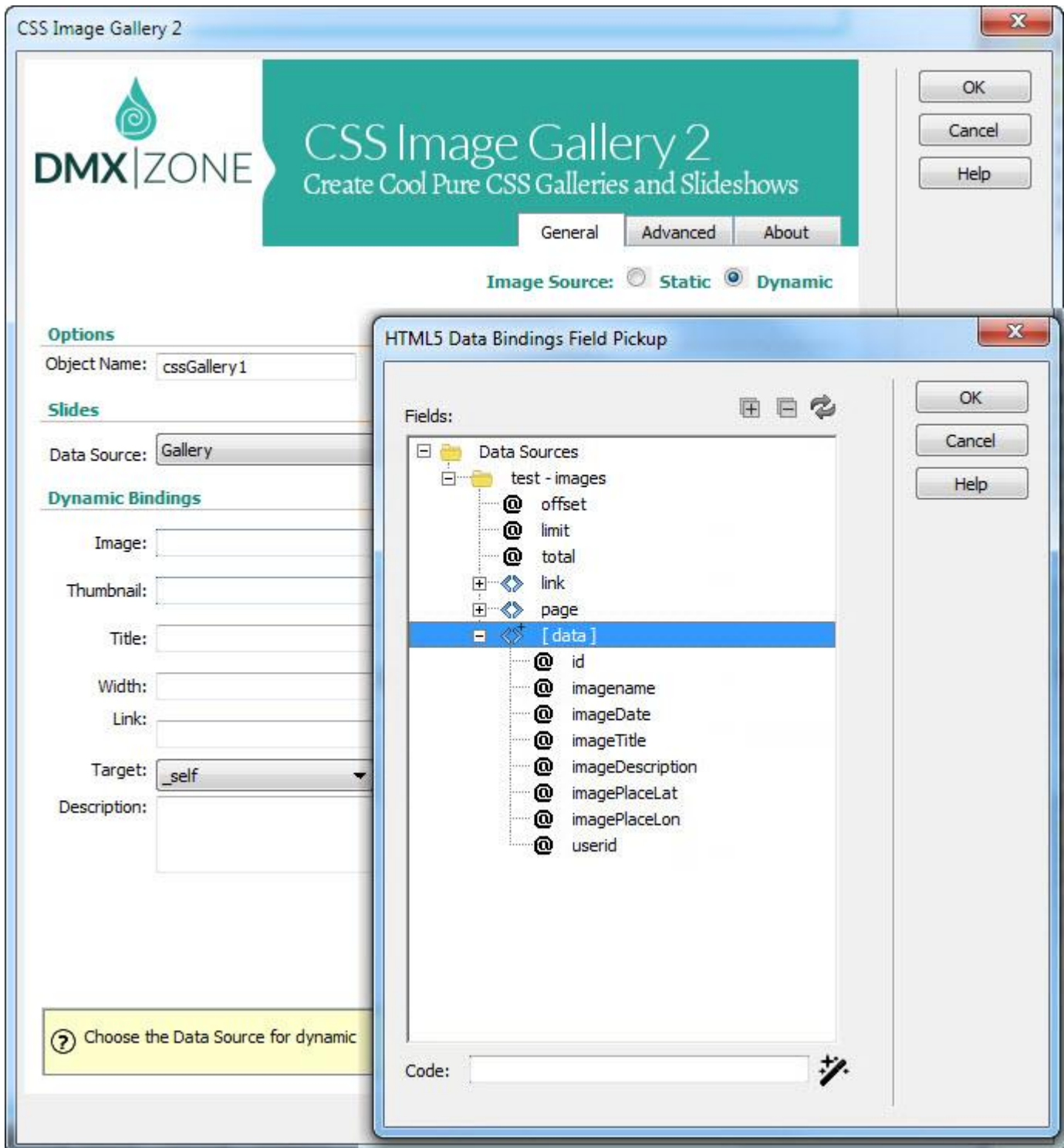
Due to the intelligent scaling the gallery automatically adjusts to the images aspect ratio with fluid effects and CSS animations.

Features in Detail

- **Great integration with HTML5 Data Bindings** - Supply the images for the CSS Image Gallery 2 from [HTML5 Data Bindings](#) local file or public feed. Choose from the many feed such as: Flickr, Picasa and other.



- **CSS Image Gallery 2 directly from dynamic sources** - Use [HTML5 Data Bindings](#) and [DMXzone Database Connector PHP/ASP](#) to connect to your images.



- **64bit Dreamweaver support** - CSS Image Gallery 2 runs smoothly even on 64bit Dreamweaver.

The screenshot shows a web browser window displaying a CSS Image Gallery 2. The gallery features a large main image of an underwater scene with a shipwreck and coral reefs. Below the main image is a row of five smaller thumbnail images. The browser's developer tools are open, showing the 'Properties' panel for the gallery. The properties panel includes the following settings:

- Design:** Blue
- Slide Duration:** 3 sec
- Slides:** (button)
- cssGallery1:** (input field)
- Auto Play:**
- Start Slide:** 0
- Pause On Hover:**
- Gallery:** Width (input), Align: Default, **Padding:** Horiz (input), Vert (input), **Caption:** Pos: Top
- Thumbs:** Width: 95, Height: 80, Pos: Bottom, Show On Hover, Opacity: 40 %

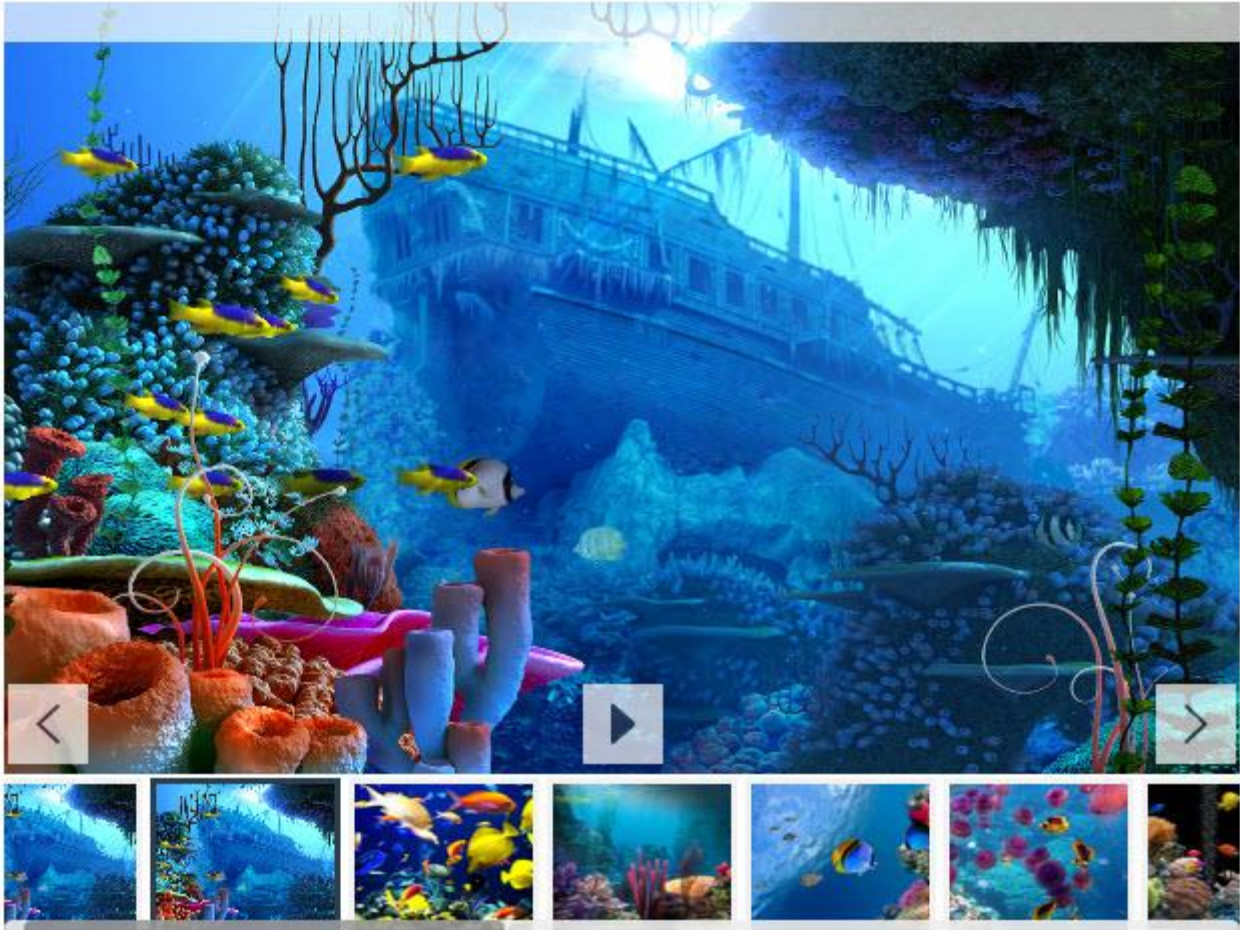
- **Support for gestures** - For optimal gallery performance on mobile devices you can use native gestures and slide through the images with ease.



- **Amazing themes** - Select one of the beautiful designs supplied in the extension or edit them through the CSS to fit your website perfectly.

General			
Design:	<input type="text" value="Default"/>	Gallery Width:	<input type="text"/>
Align:	<input type="text" value="Blue"/> <input type="text" value="Dark"/>	Padding Vert:	<input type="text"/>
Padding Horiz:	<input type="text" value="Default"/> <input type="text" value="Green"/> <input type="text" value="Red"/>		

- **Custom scrollbars** - Let your users enjoy the minimalistic scrollbar which appears on hover in the thumbnails list for quick and easy navigation. They can scroll by swiping with the mouse in the browser or finger touch and swipe when using an iPad, iPhone or other touch device.



- **Great thumbnail navigation and image transitions** - Navigate using thumbnails and enjoy the great fade and motion effects that are displayed when browsing through the gallery. You can also position the thumbnails on each side of the gallery for maximum user experience.

Thumbnails

Width:	<input type="text" value="95"/>	Height:	<input type="text" value="80"/>
Pos:	<input type="text" value="Bottom"/> <input type="text" value="Top"/> <input type="text" value="Bottom"/> <input type="text" value="Left"/> <input type="text" value="Right"/>	<input type="checkbox"/>	Show On Hover

- **Fluid effects with CSS animations** - Due to the intelligent scaling the gallery automatically adjusts to the images aspect ratio when image sizes are different.
- **Fully responsive CSS Image Gallery 2** - It looks great on a desktop browser, phone or other mobile devices. Just add 100% width or leave the field empty.

DMX|ZONE

CSS Image Gallery 2

Create Cool Pure CSS Galleries and Slideshows

General Advanced About

General

Design:

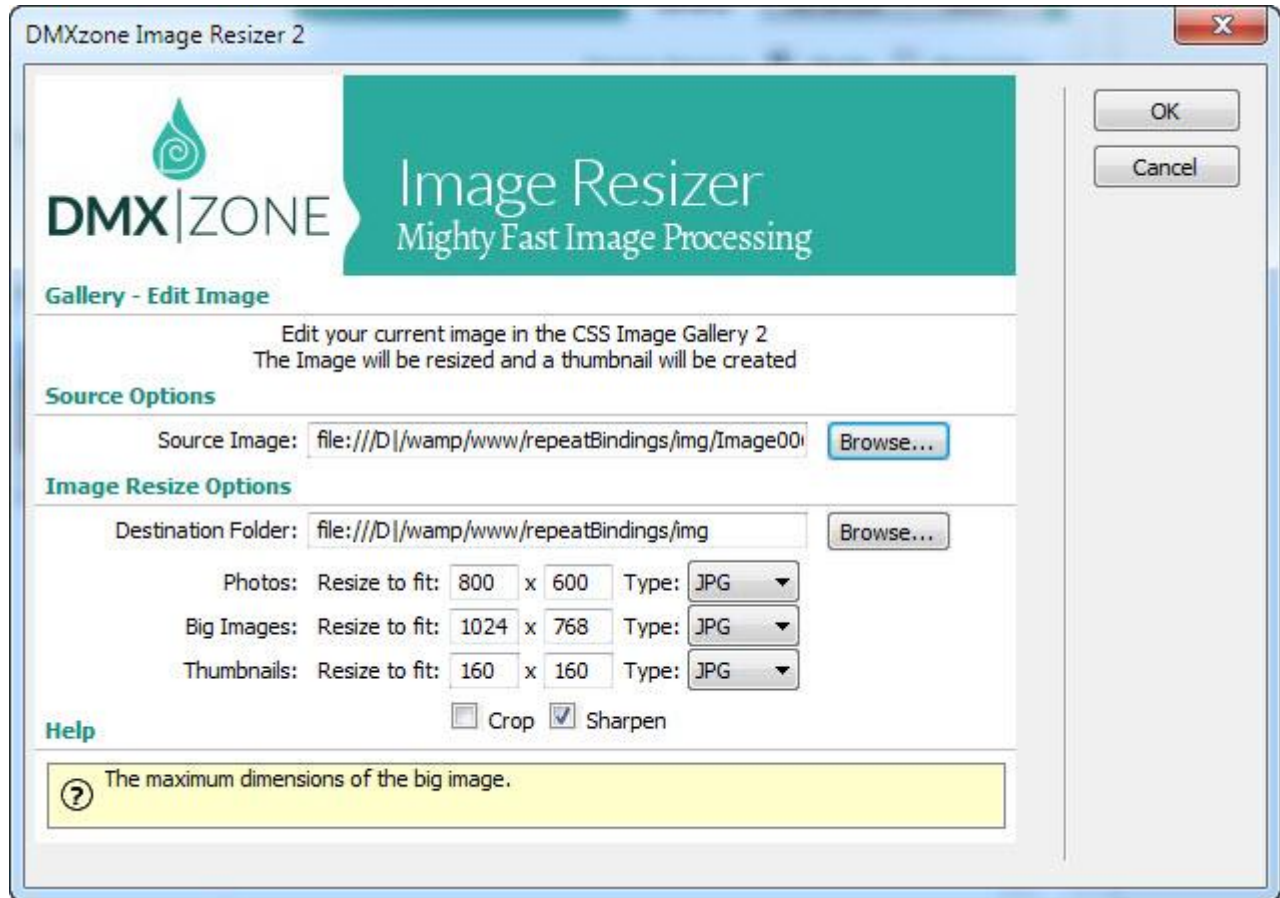
Align:

Padding Horiz:

Padding Vert:


Gallery Width:

- **Integrated DMXzone Resizer** - Resize all your images super-fast to a regular size for the gallery, bigger size for display in DMXzone Lightbox or as thumbnails.

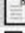
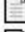
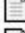
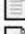
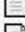

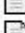



- **Preview of images, title and description** - Awesome preview of your images, title and description directly in the User Interface.

Slides




2,405,534 bytes
Click To Preview

Image	Title
 images_CSSImg/Image001.jpg	Underworld
 images_CSSImg/Image002.jpg	
 images_CSSImg/Image003.jpg	
 images_CSSImg/Image004.jpg	
 images_CSSImg/Image005.jpg	
 images_CSSImg/Image006.jpg	
 images_CSSImg/Image007.jpg	
 images_CSSImg/Image008.jpg	

Title: ID:

Link:

Description:

 Enter description for the slide.

- **Full support for the DMXzone Behavior Connector** - You can easily bind other DMXzone extensions to your slides.

DMX|ZONE Behavior Connector
Interconnect Your Dreamweaver Extensions

Available Behaviors

- DMXzone
- Call JavaScript
- Change Property
- Check Plugin
- Drag AP Element
- Effects
- Go To URL
- Jump Menu Go
- Jump Menu
- Open Browser Window
- Popup Message
- Preload Images
- Set Text
- Show-Hide Elements

Available Events

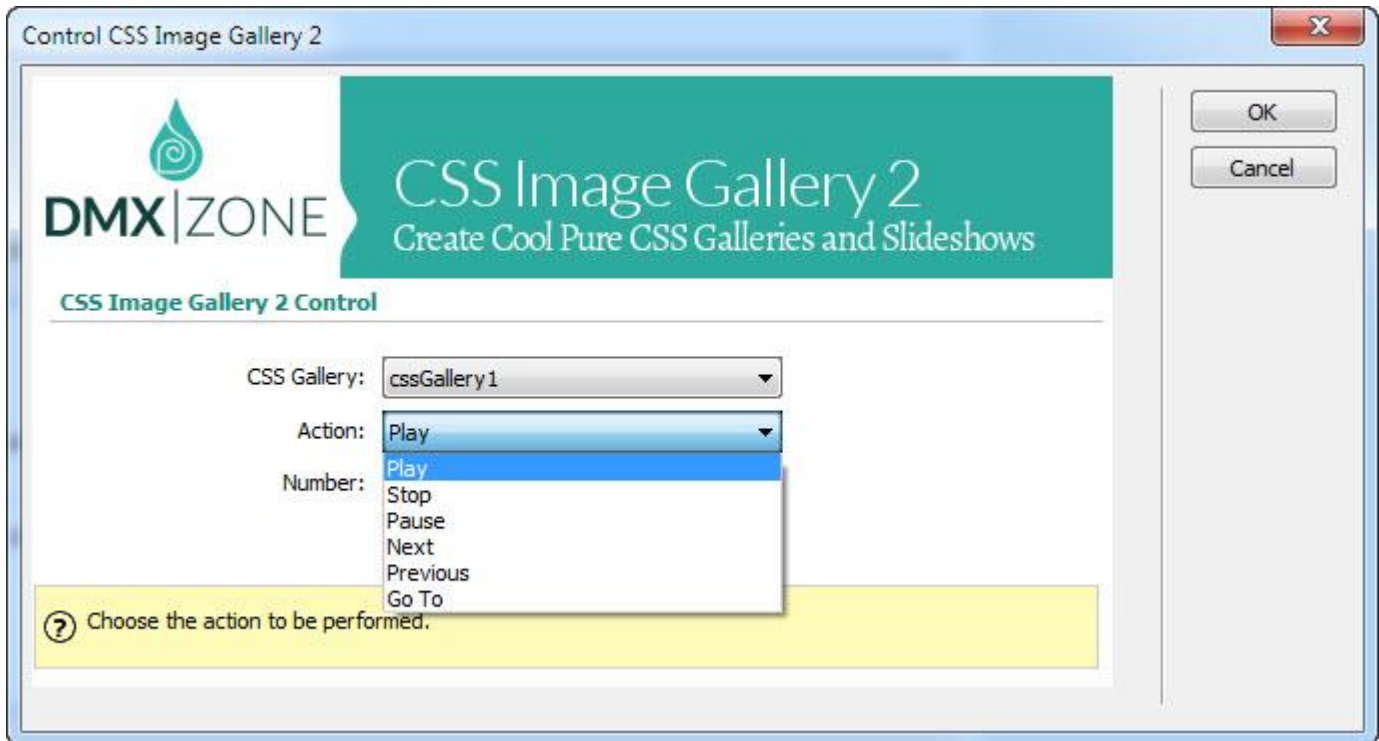
- onclick - Click on the image
- onfocus - The image is displayed
- onblur - The image gets hidden
- onmouseover - Mouse over the image
- onmouseout - Mouse leaves the image

Attached Behaviors

Usage

- Select one of the **"Available Events"** that this extension can trigger.
- To add a behavior, select it from the list of **"Available Behaviors"** and click the ► icon.
- To add a custom javascript code use the 📄 button.
- To modify an existing behavior, select it from the list of **"Attached Behaviors"** and use the 🛠 button.
- If you use the ▲ ▼ arrow buttons to change the order of **"Attached Behaviors"**, keep in mind that they will be applied in the same order at the browser.

- **Fully controllable by behaviors** - You can choose between many great actions.



Before you begin

Make sure to setup your site in Dreamweaver first before creating a page. If you don't know how to do that please [read this](#).

Installing the extension

Read the tutorial at <http://www.dmxzone.com/go/4671/how-to-install-extensions-from-dmxzone/>

Login, download the product, and look up your serial at <http://www.dmxzone.com/user/products>

Get the latest DMXzone Extension Manager at
<http://www.dmxzone.com/go/22670/dmxzone-extension-manager-for-dreamweaver>

Open DMXzone Extension Manager and go to your Purchased products tab and click install. If you have a subscription, the extension is to be found and installed in the Explore tab.

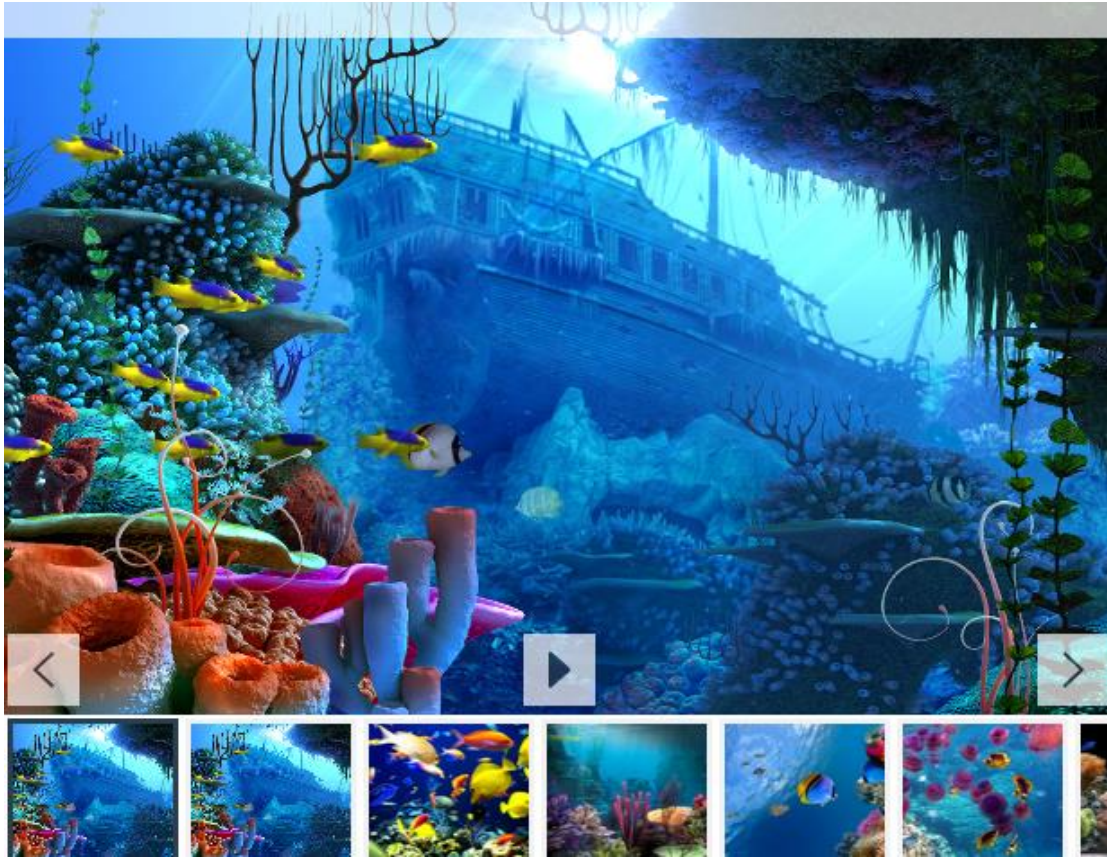
Get the latest extension manager from Adobe at
http://www.adobe.com/exchange/em_download/

Open the .zxp file if you're using Dreamweaver CC or the .mxp file for Dreamweaver CS+ with Adobe Extension manager and install the extension.

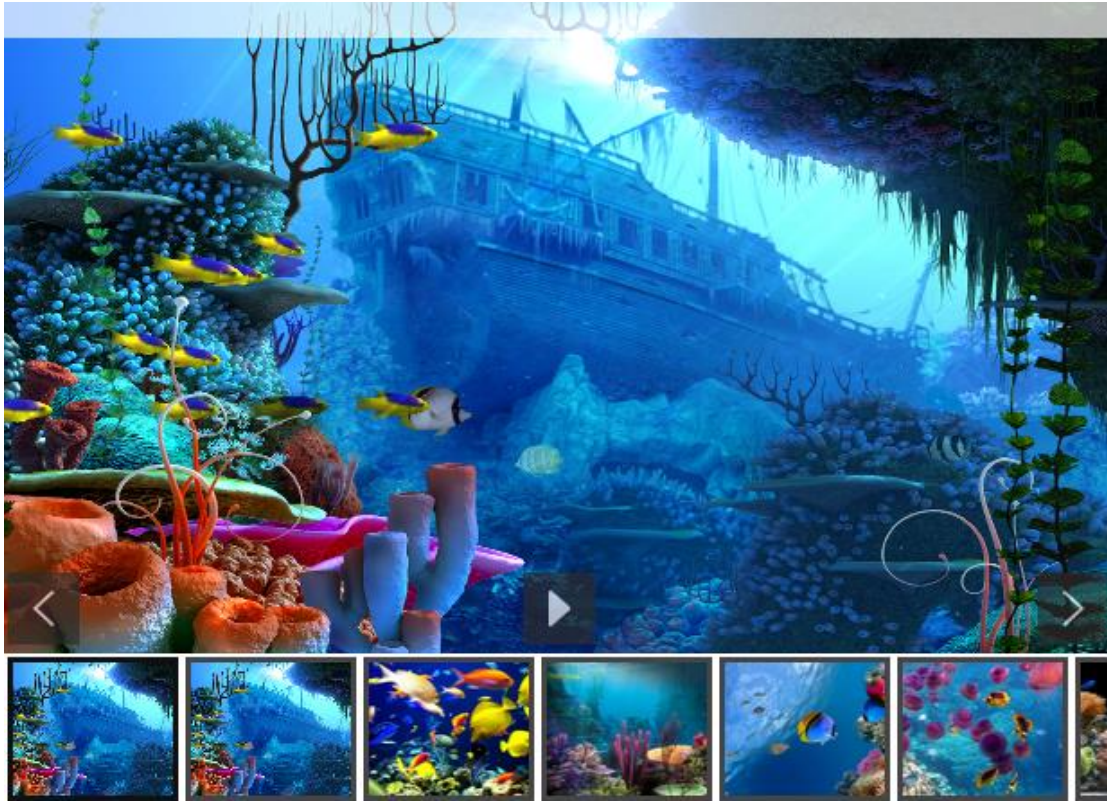
If you experience any problems contact our Live Support!

Reference: CSS Image Gallery 2 Designs

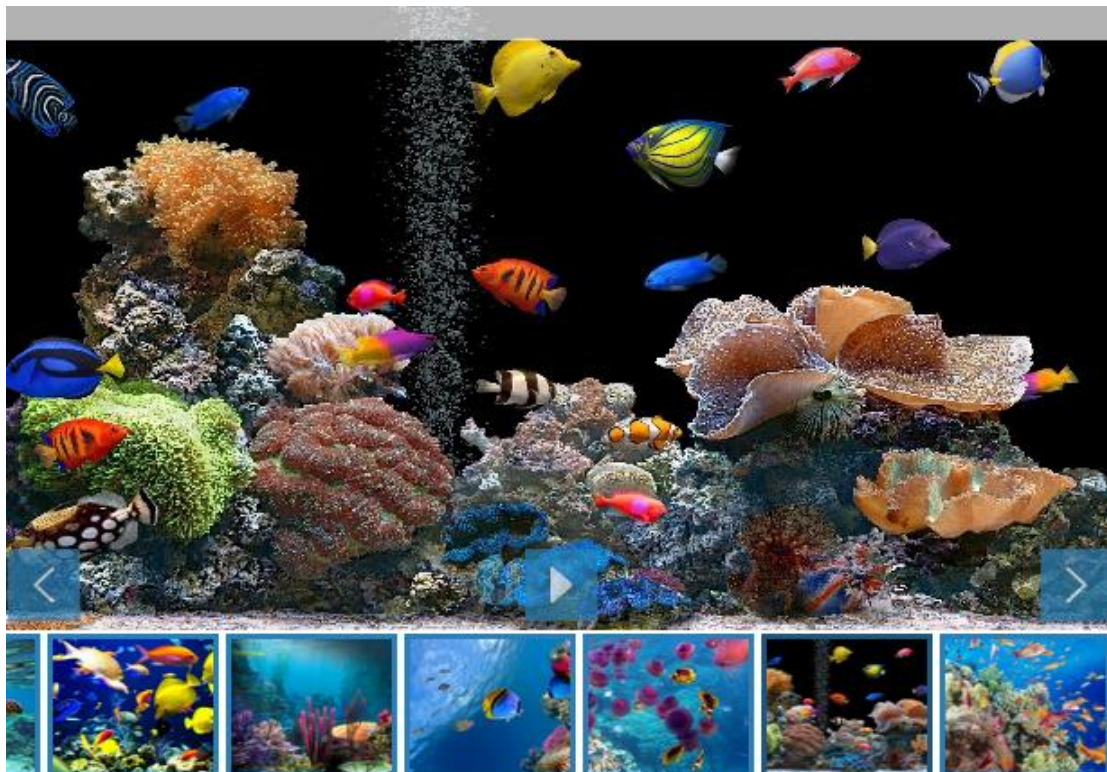
Default



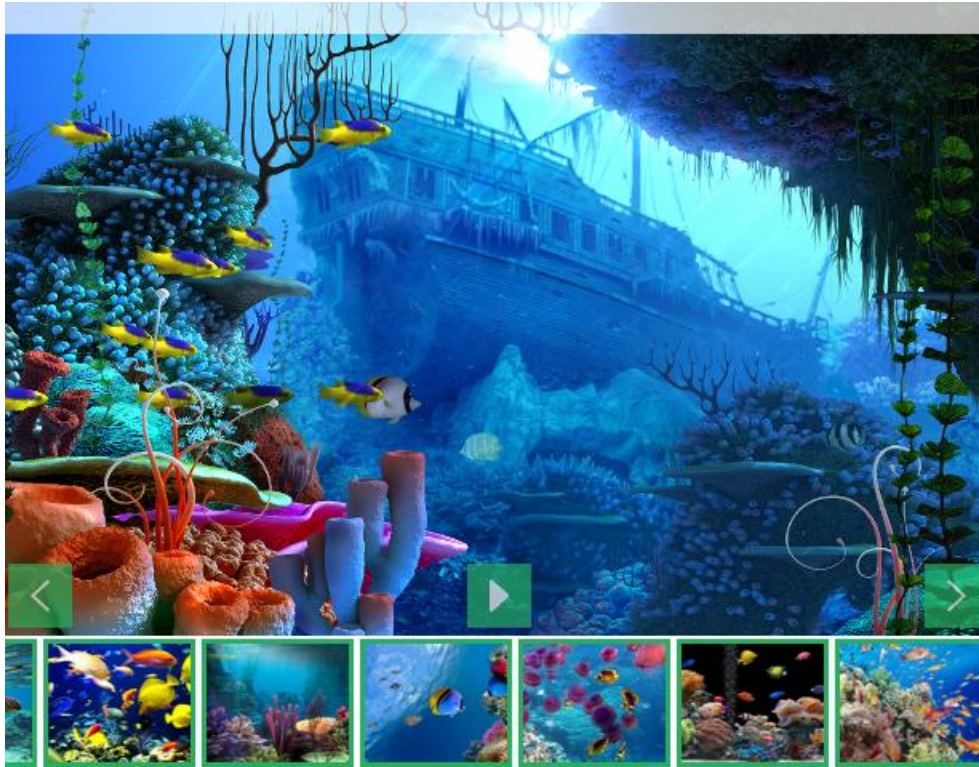
Dark



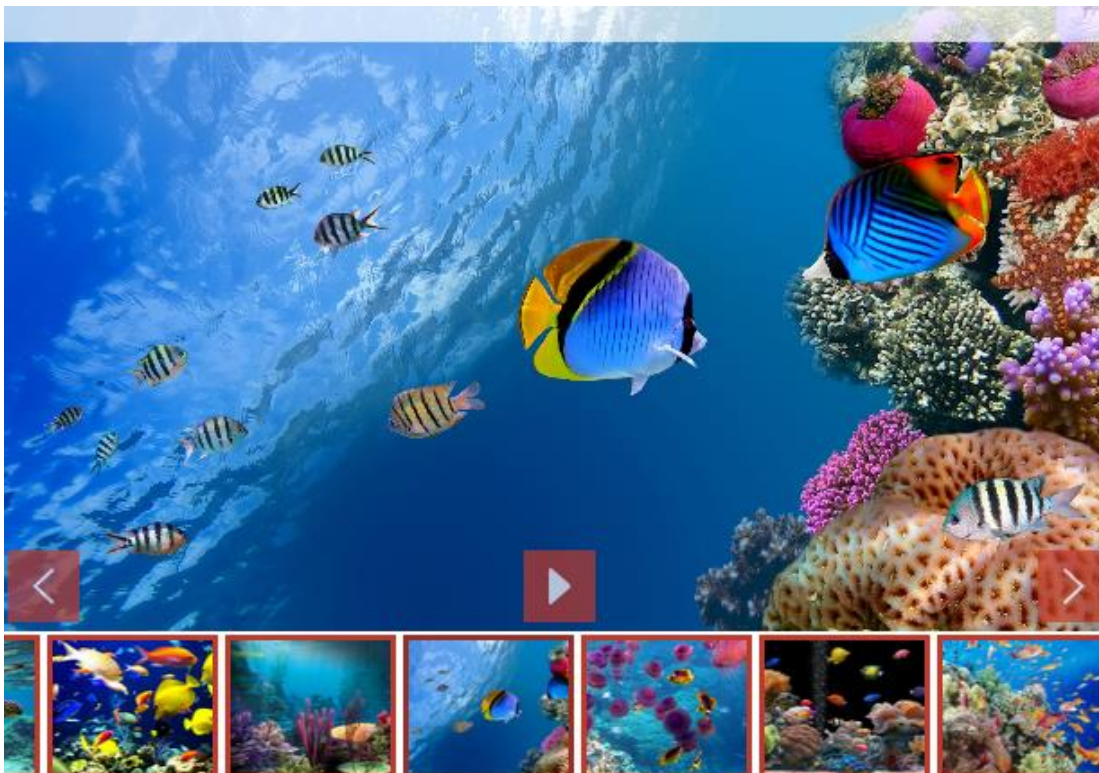
Blue



Green



Red



Round



The Basics: Creating a Responsive CSS Image Gallery

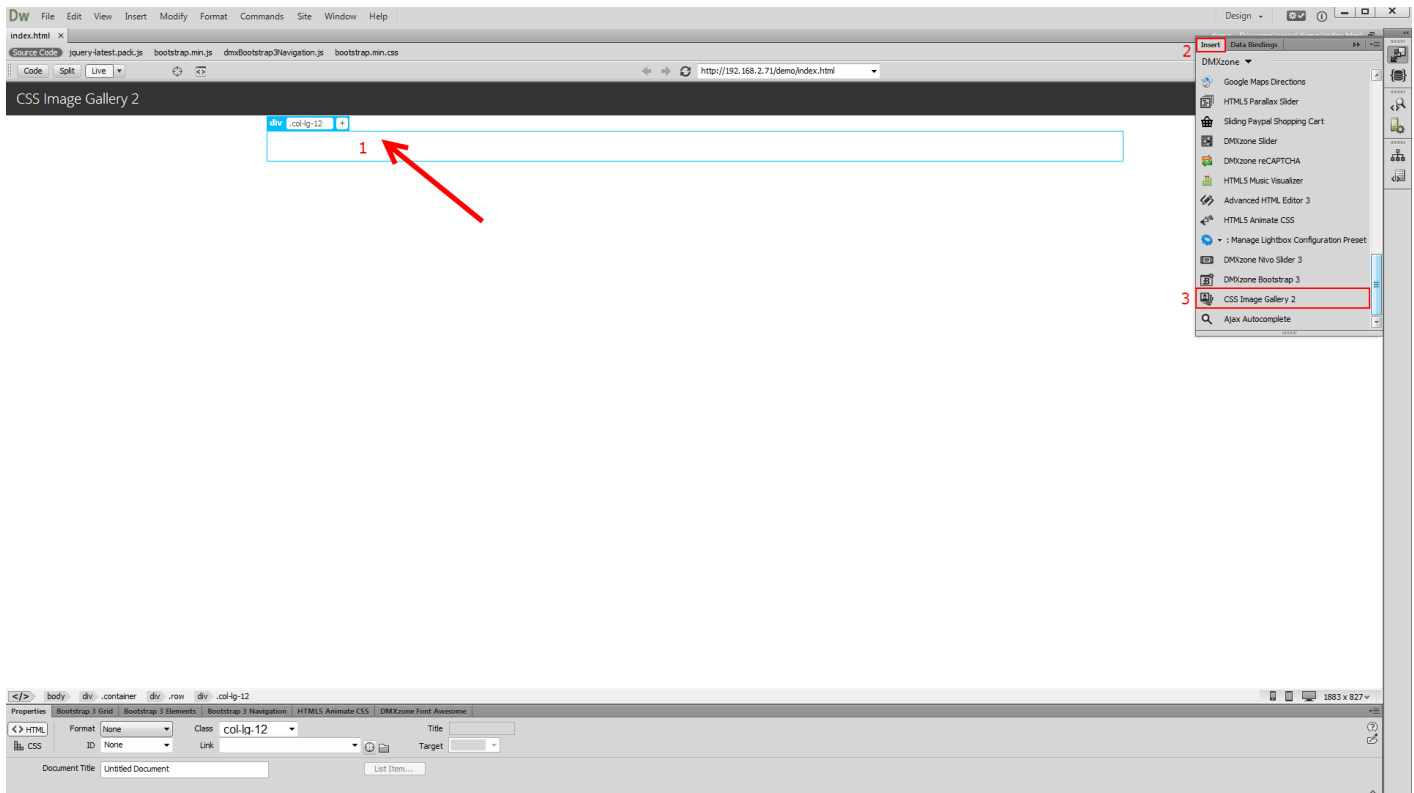
In this tutorial we will show you how to add a responsive image gallery to your page using [CSS Image Gallery 2](#)

*You can also check out the [video](#).

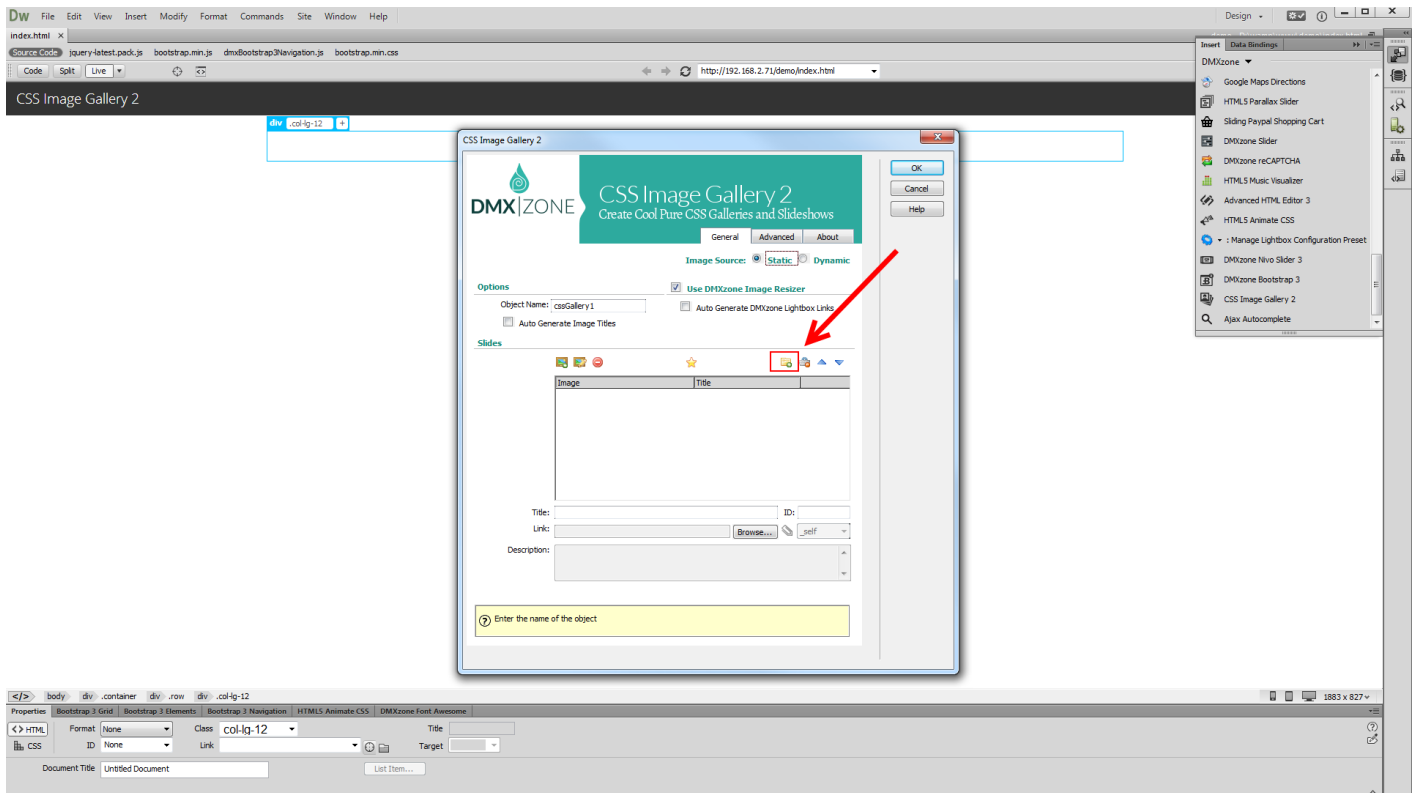


How to do it

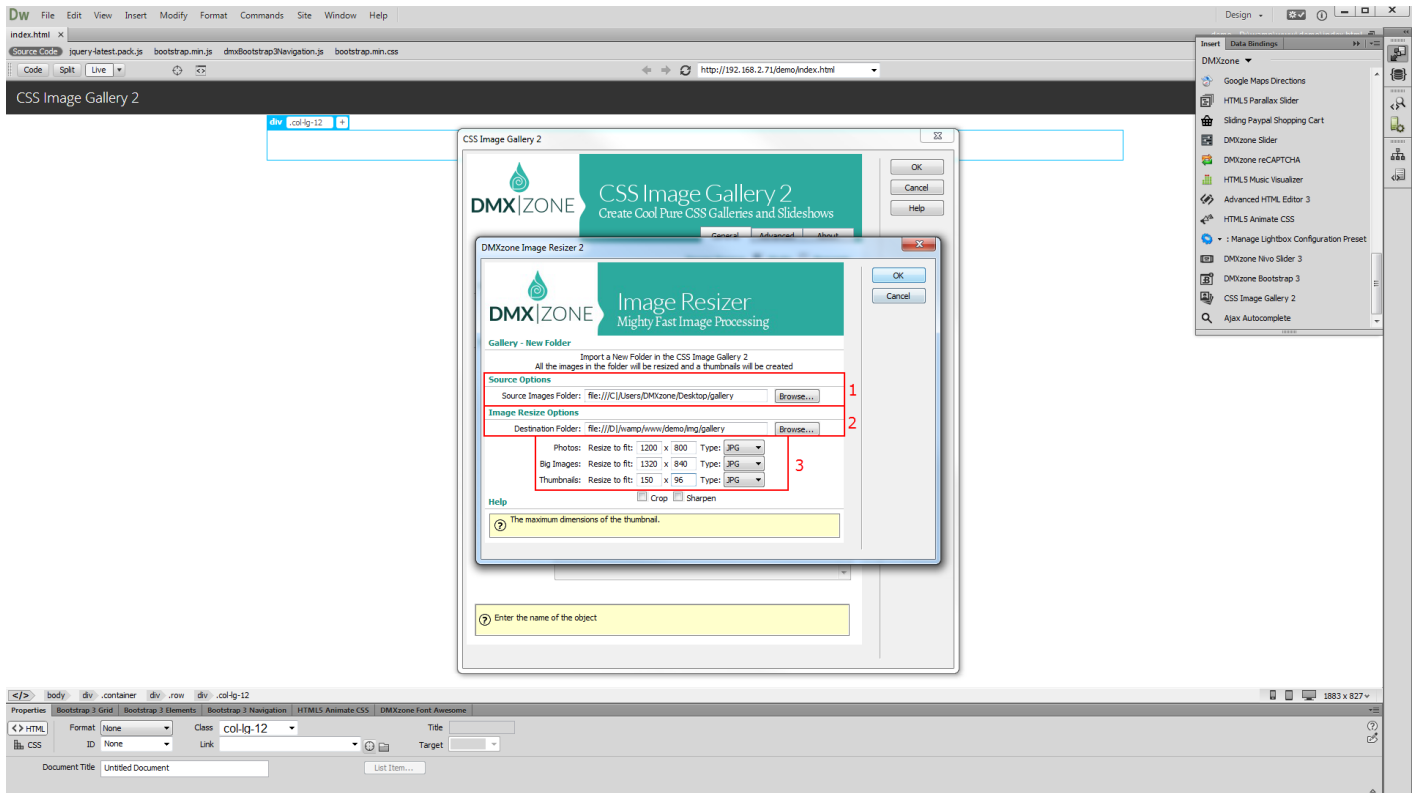
1. We created a really basic page layout. Our page contains a responsive Bootstrap 3 container. Inside the container we want to place the CSS Image Gallery 2. Click inside the **container (1)** and from the **insert panel (2)** select **CSS Image Gallery 2 (3)**.



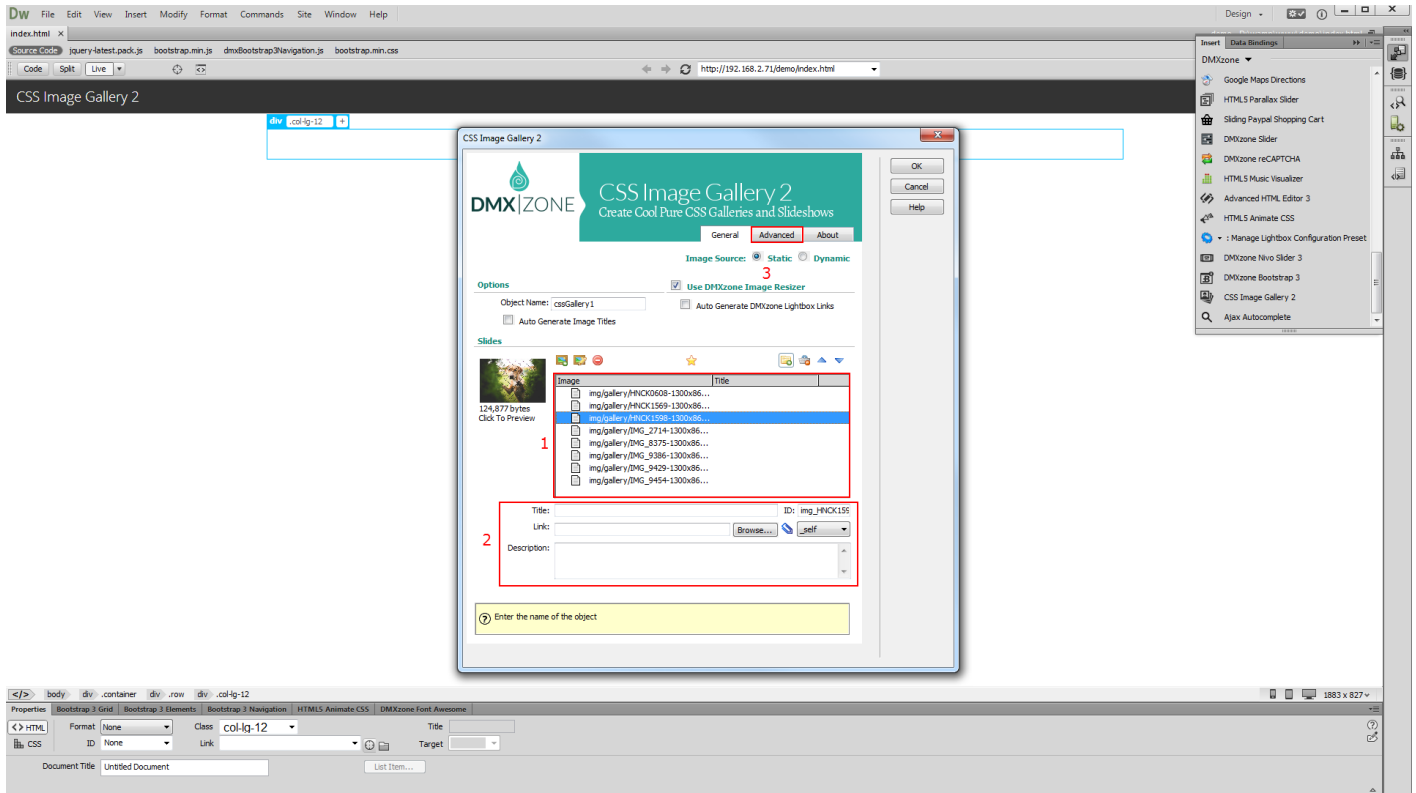
- For this tutorial we are going to use a static image source. That means that we will select the images manually from some location, on our hard drive. You can choose whether to use the DMXzone Image Resizer 2 when importing the images into the slider. If you already resized your images with some image-editing software, like Photoshop you can turn this option off. You can import a single image or a folder of images. We'll add **a folder of images**.



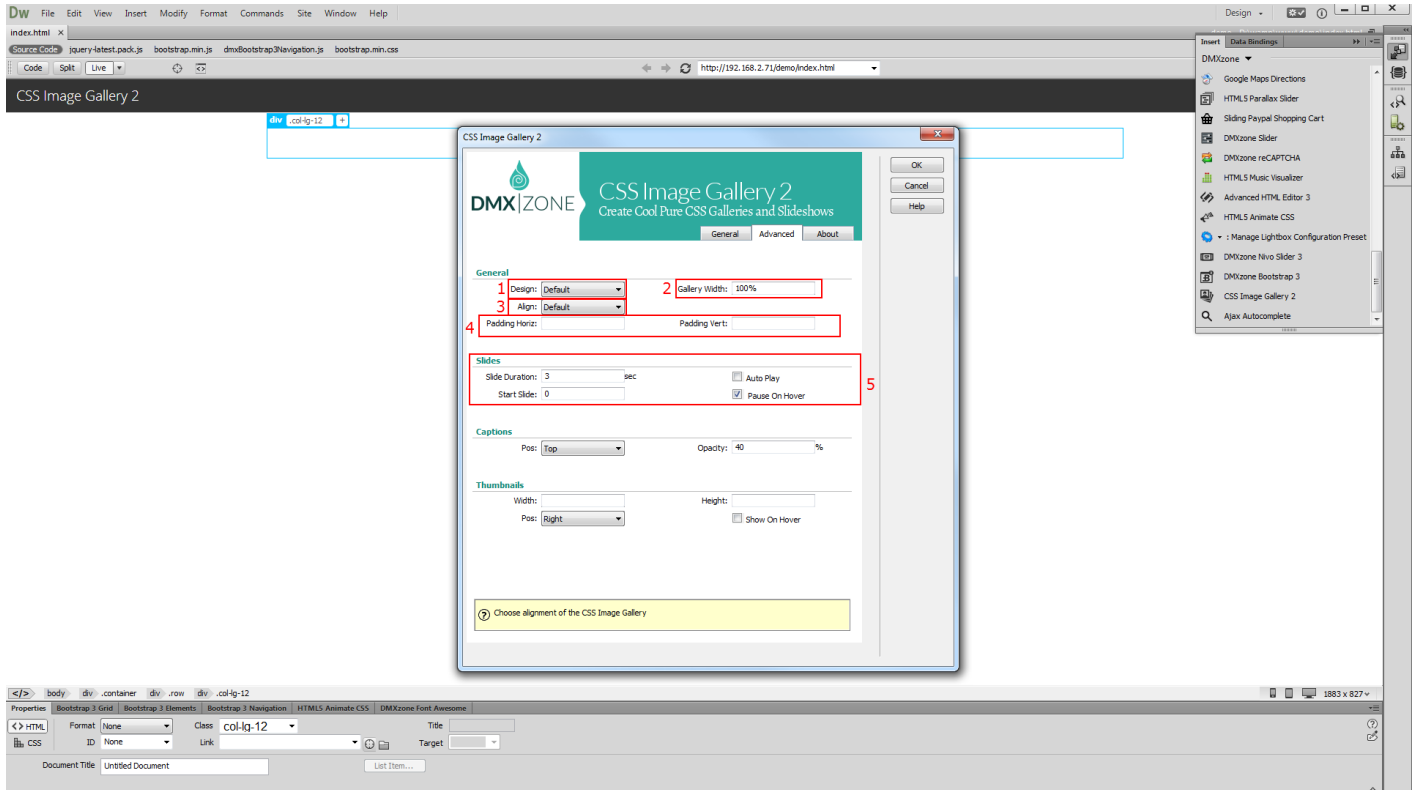
3. The DMXzone Image resizer 2 dialog appears as we enabled it. Select the **source images folder (1)** and select the **destination folder (2)**. Note, that the destination folder should be located inside your site root. Adjust the images resize options. Enter the **width and height (3)** that your Gallery Images, Big Images and Thumbnails should be. When you're done, click OK.



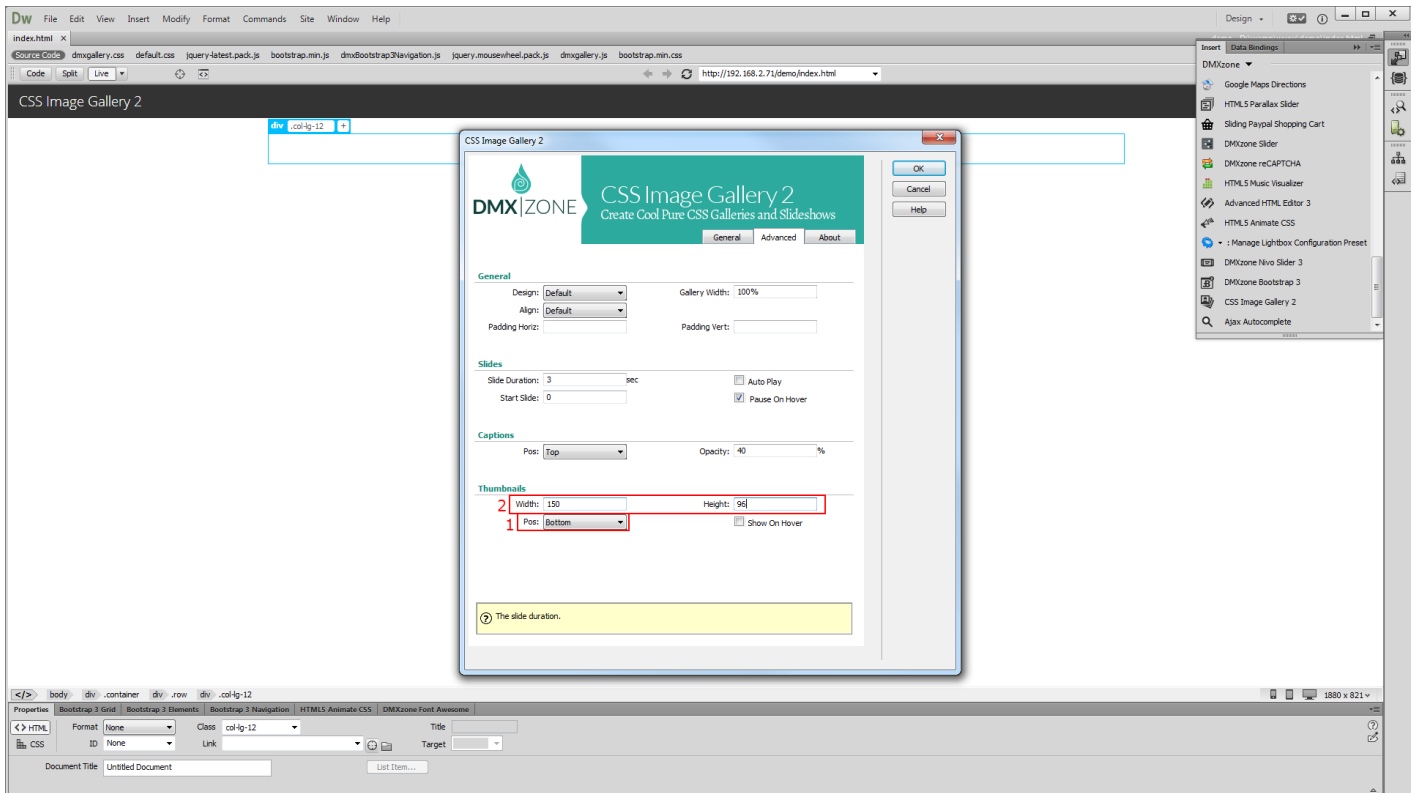
- You can see the slides, created by importing the folder with images. When you select any of the **images (1)** you can add **title, link and description (2)**. We choose not to add any. When you're done, click the **advanced tab (3)**.



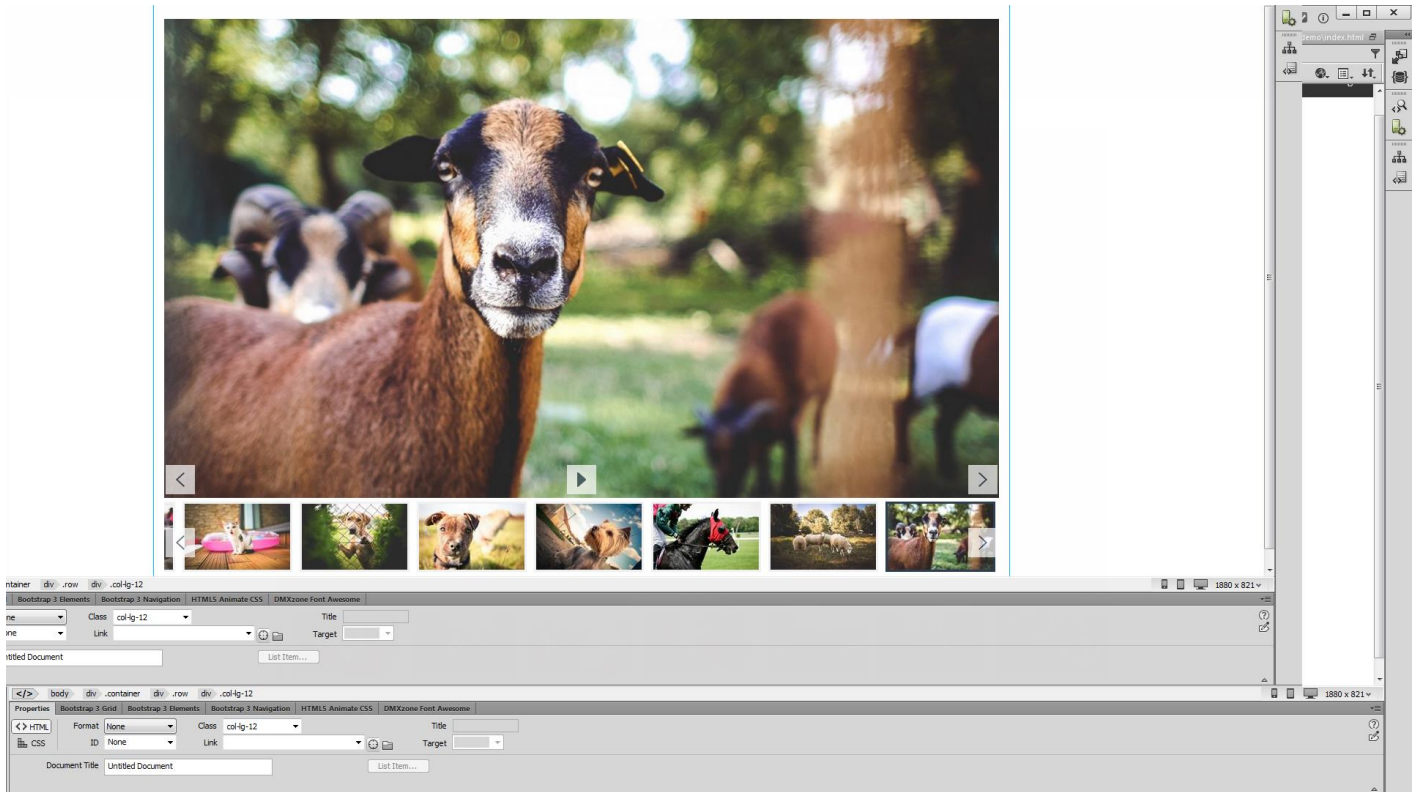
- For this tutorial we use the default design (1). We set a **width of 100%** (2) so that it will be 100% of the container that is placed into in order to be responsive. Leaving the width field empty does the same. You can also customize the **alignment options** (3) and add **horizontal or vertical padding** (4). You can customize the **slides options** (5) but we leave these options to their default values.



- Now, let's customize the thumbnails. We want to have our thumbnails below the gallery, so we choose the **bottom position (1)**. Add **width** and **height** for the thumbnails **(2)** and click OK.



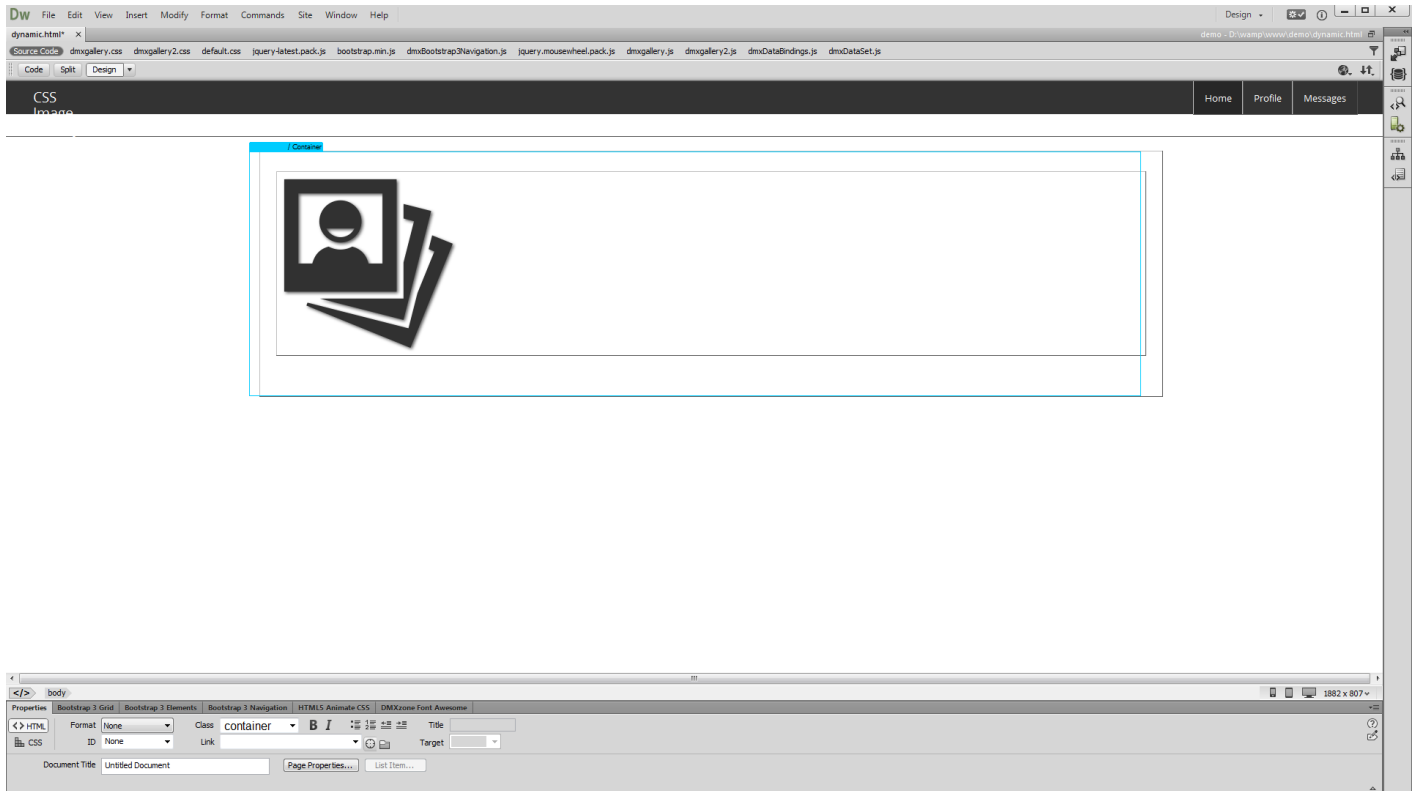
7. Now you can save your project and preview the result.



Advanced: CSS Image Gallery from Dynamic Image Source

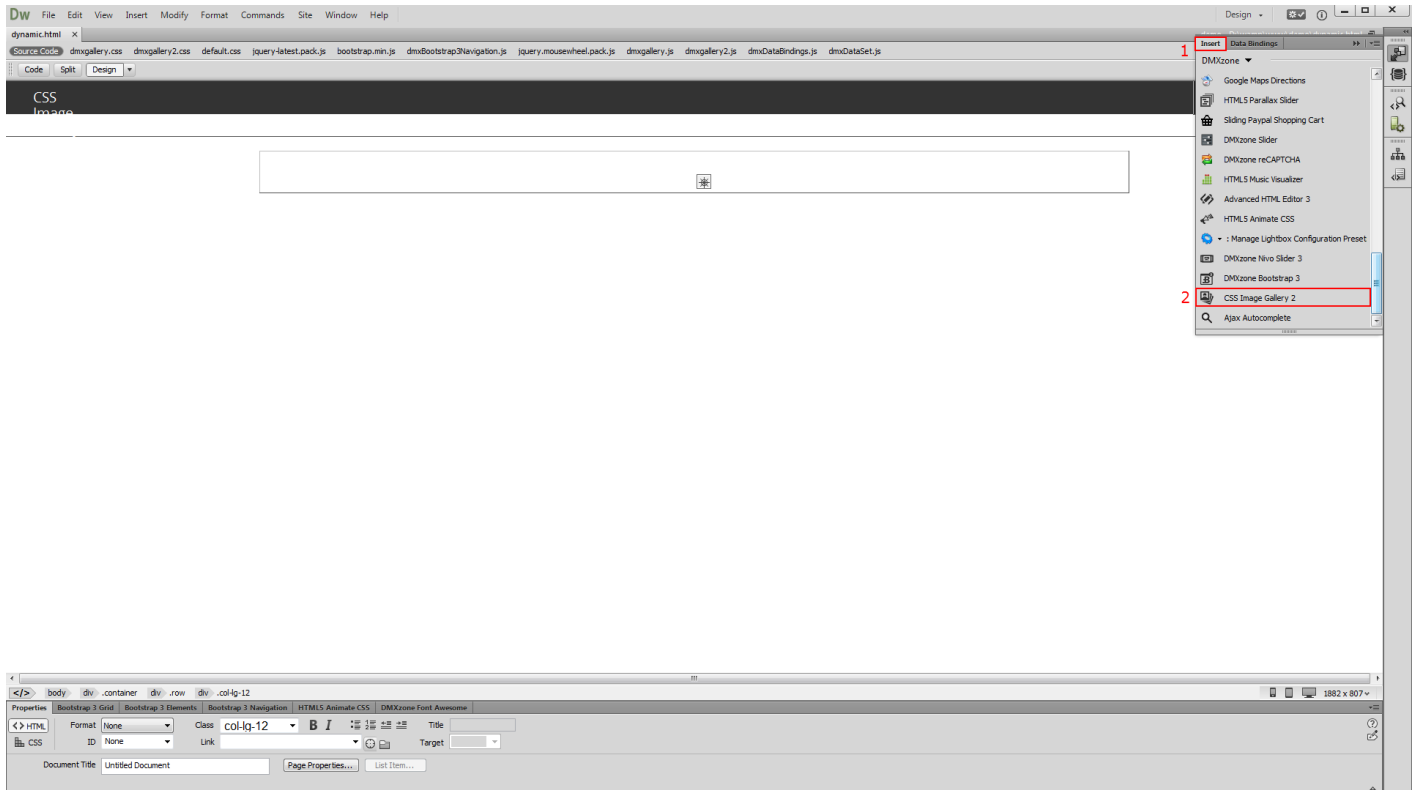
In this tutorial we will show you how to create a fully responsive [CSS Image Gallery 2](#) that uses dynamic database source for its images.

*You can also check out the [video](#).

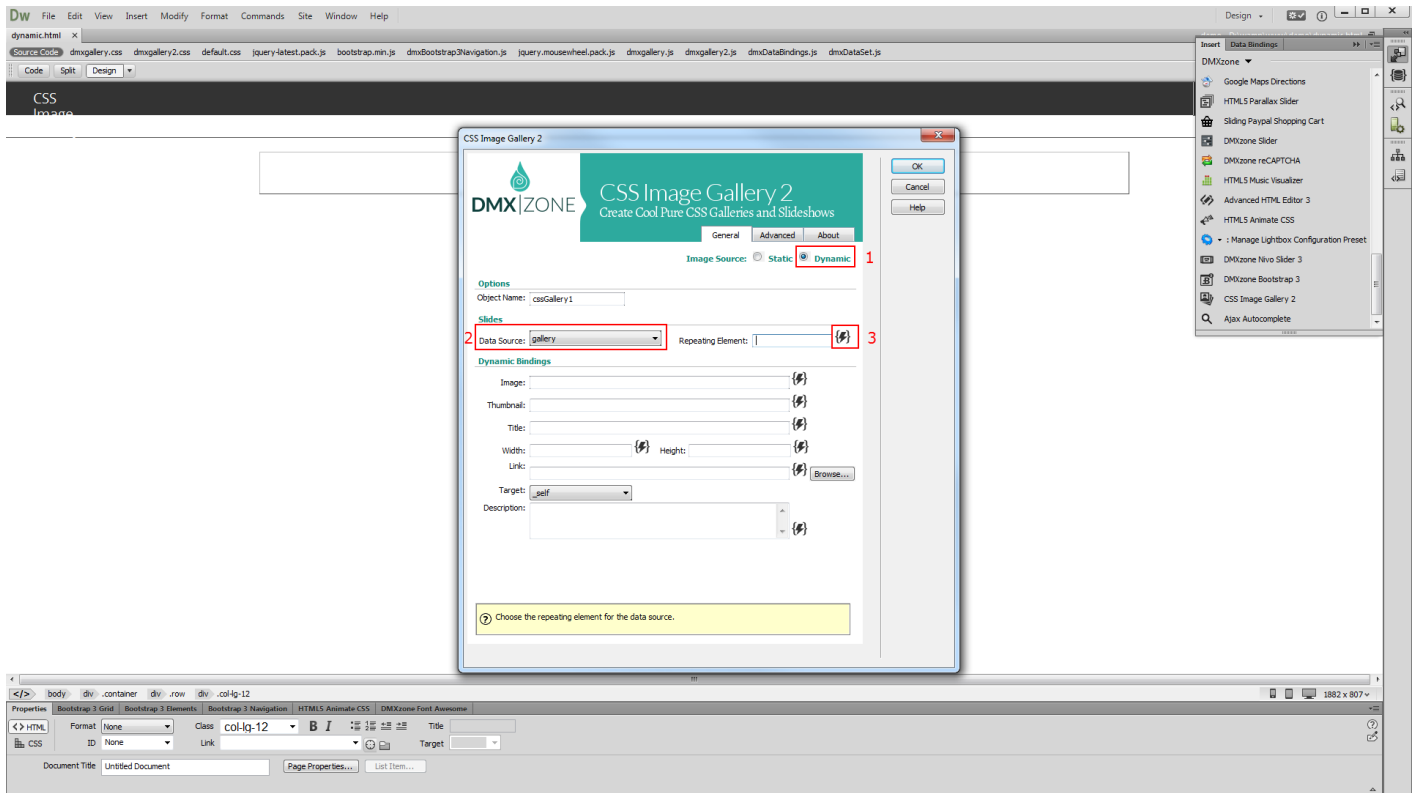


How to do it

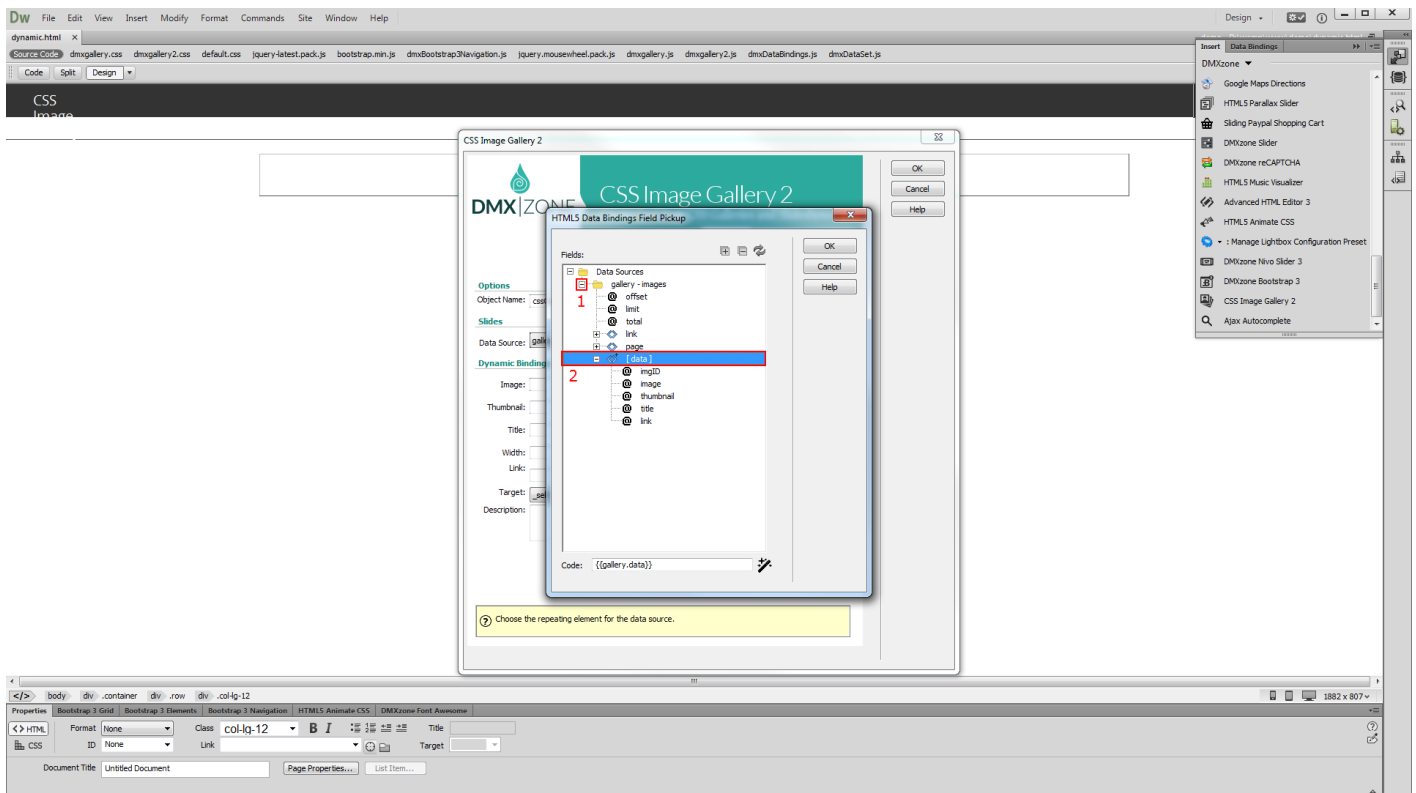
1. We created a data source, using [HTML5 Data Bindings](#). In the database we stored the path, title, description and link for each of our images. Let's add **CSS Image Gallery (2)** from the **insert panel (1)**.



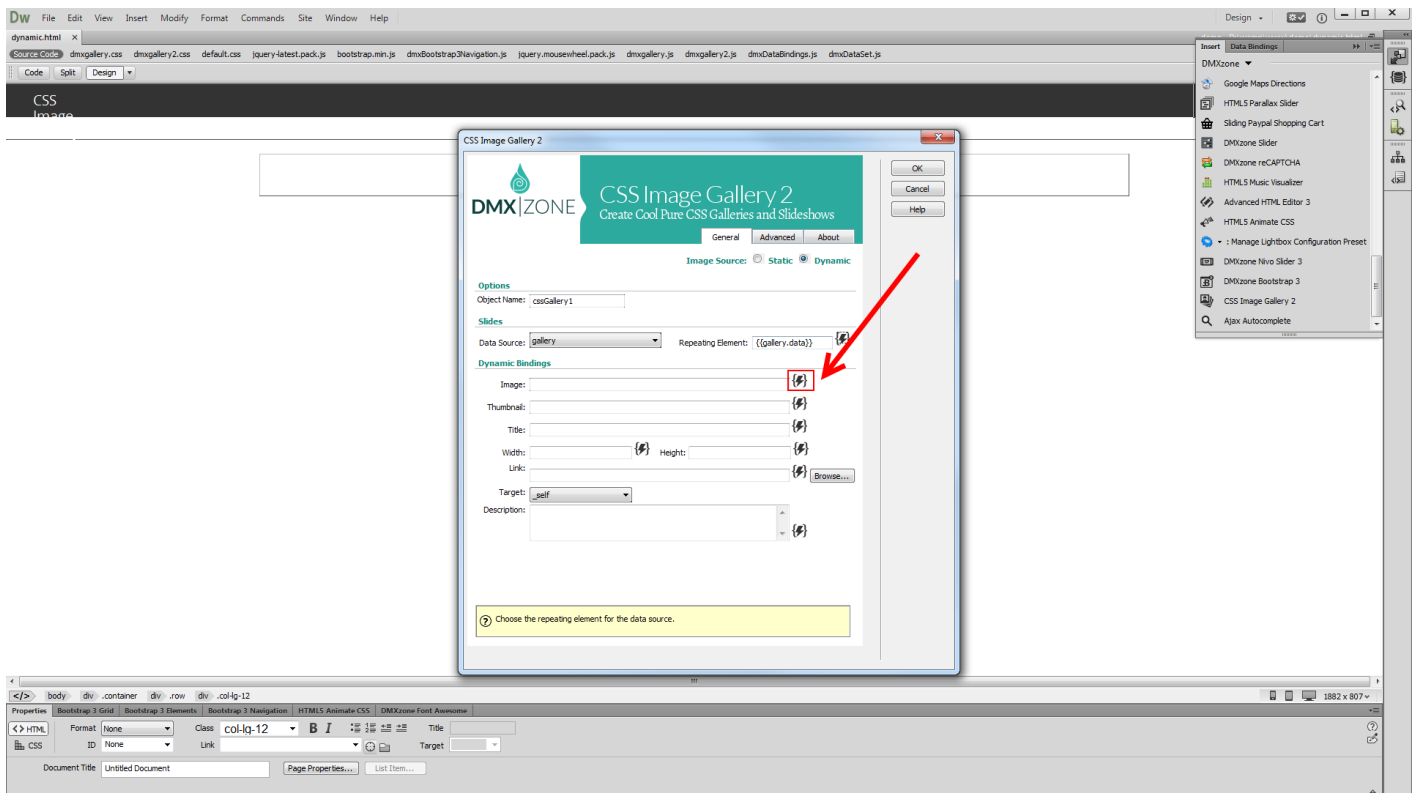
2. Select **dynamic source** radio button **(1)** and select your **data source** from the data source menu **(2)**. Now, we select the repeating element of our data source. Click the **HTML5 Data Bindings value icon** **(3)**.



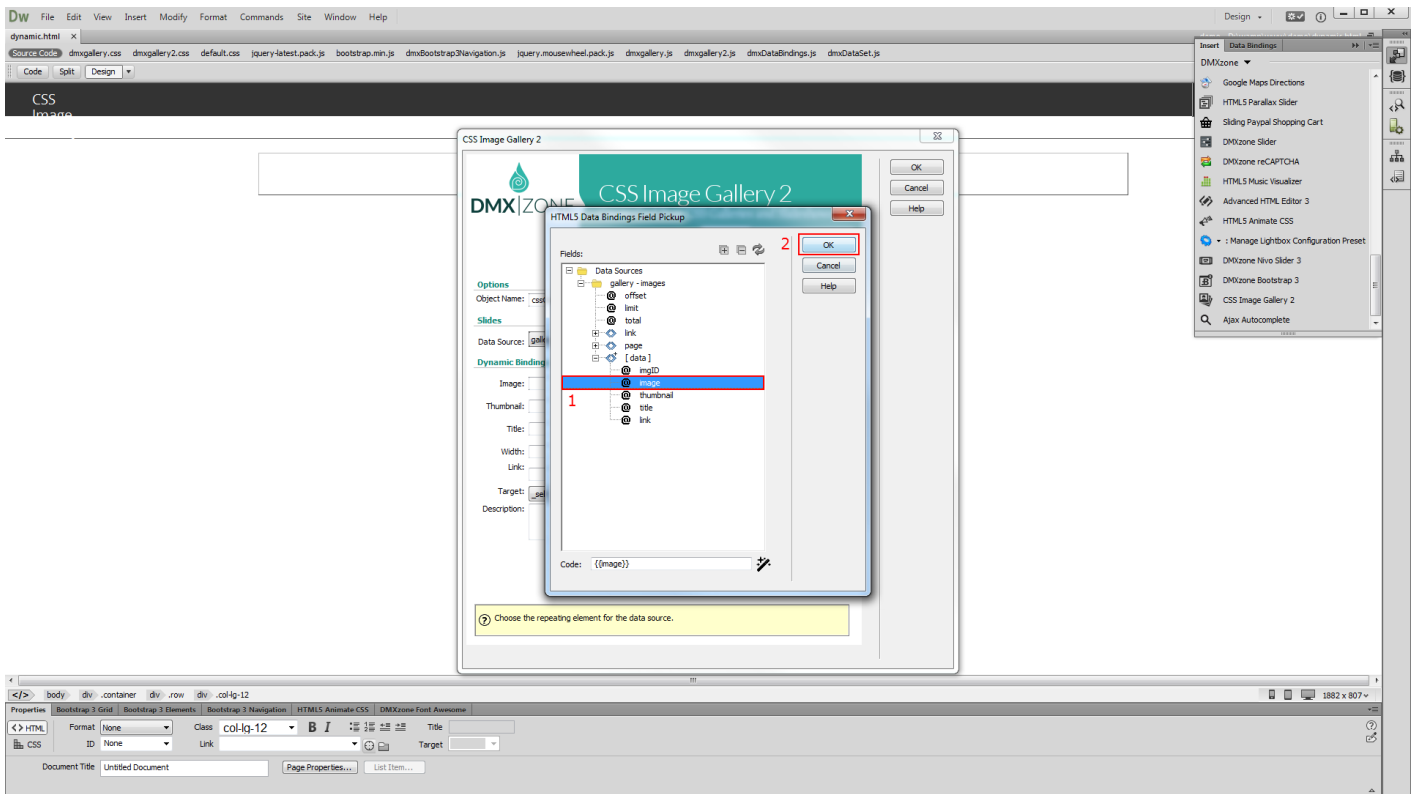
- Expand the **data source tree (1)** and select the **repeating element (2)** of your data source. The repeating element is wrapped in square brackets. When you're done, click OK.



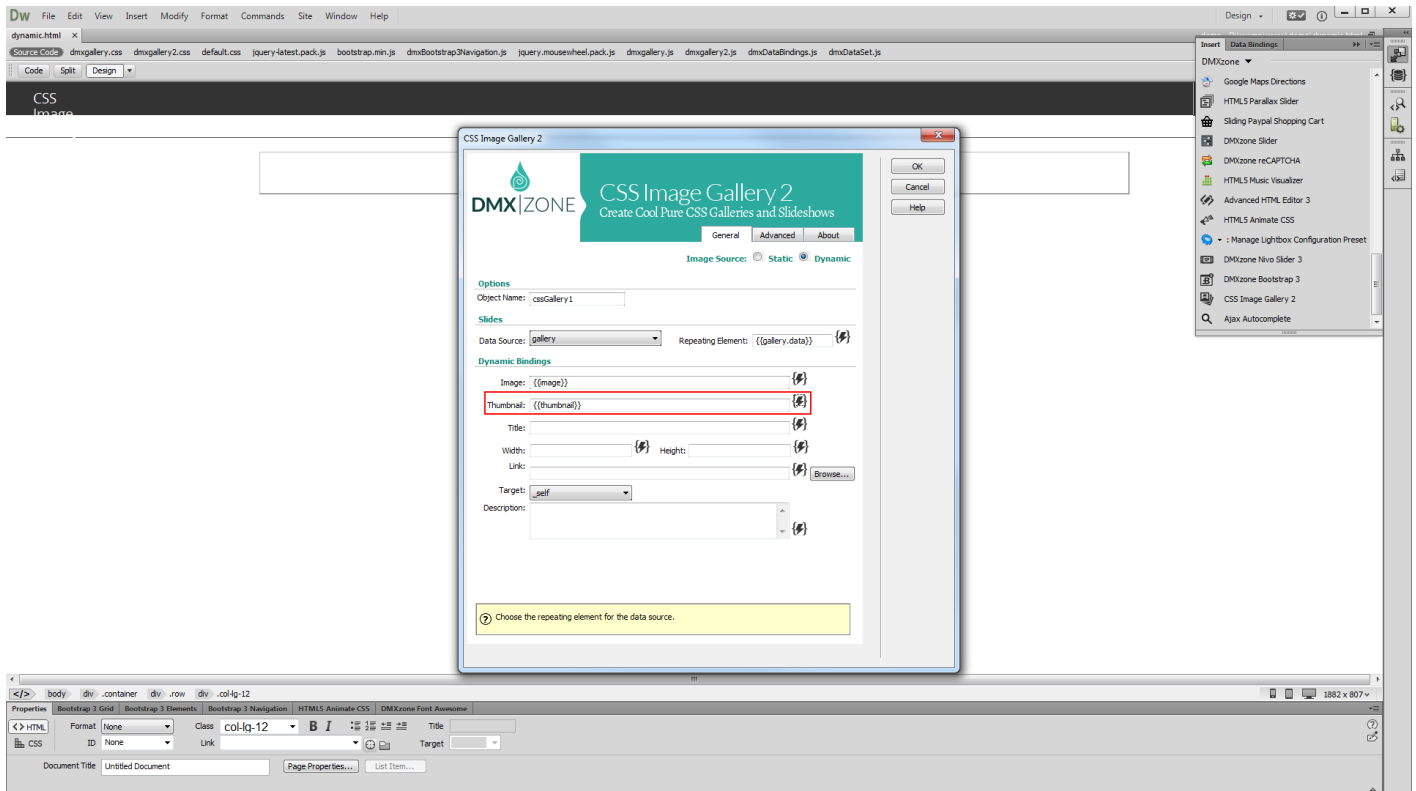
- Now let's select the data element that stores the paths of our images. Click the **HTML5 Data Bindings value icon**.



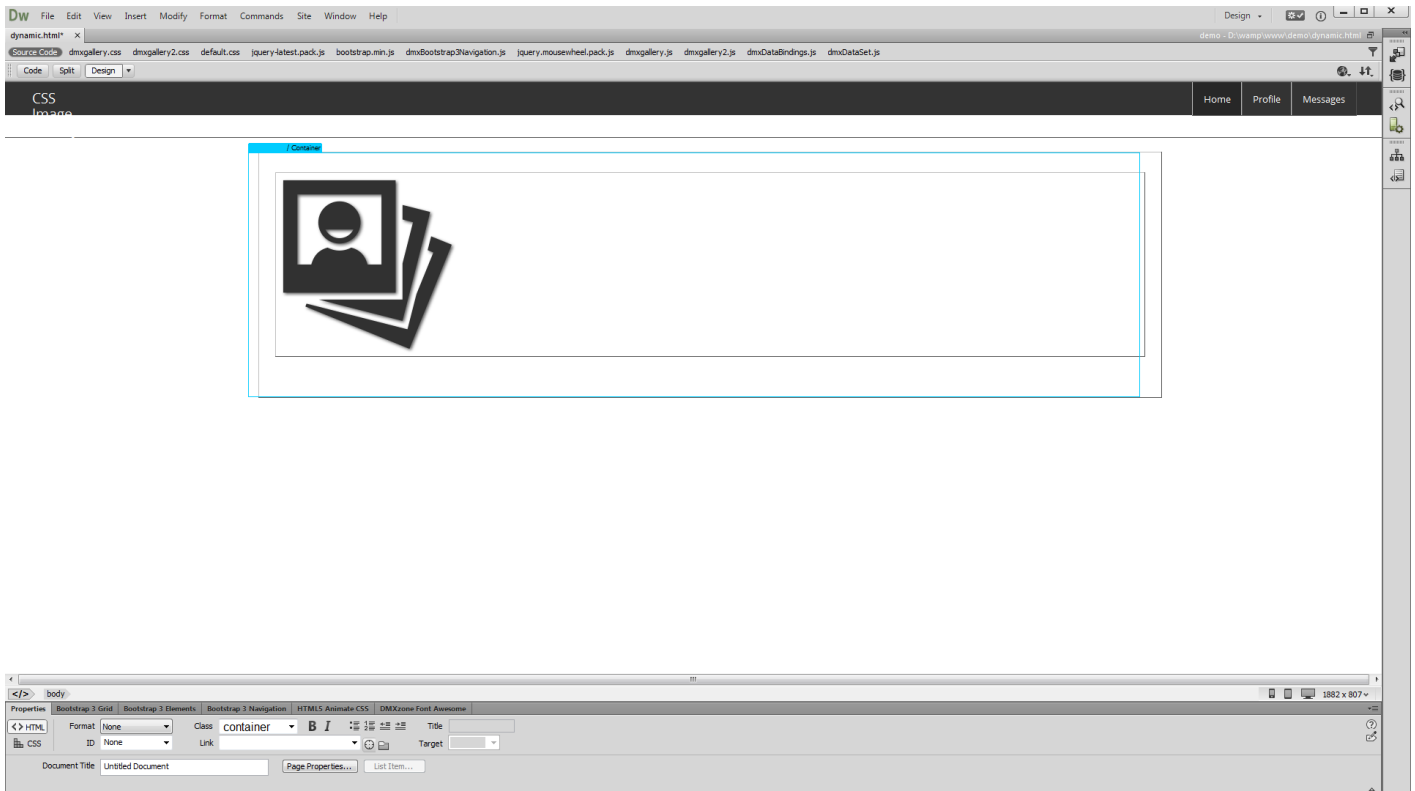
5. In our data source it is called: **image**. Select it **(1)** and click the **OK button (2)**.



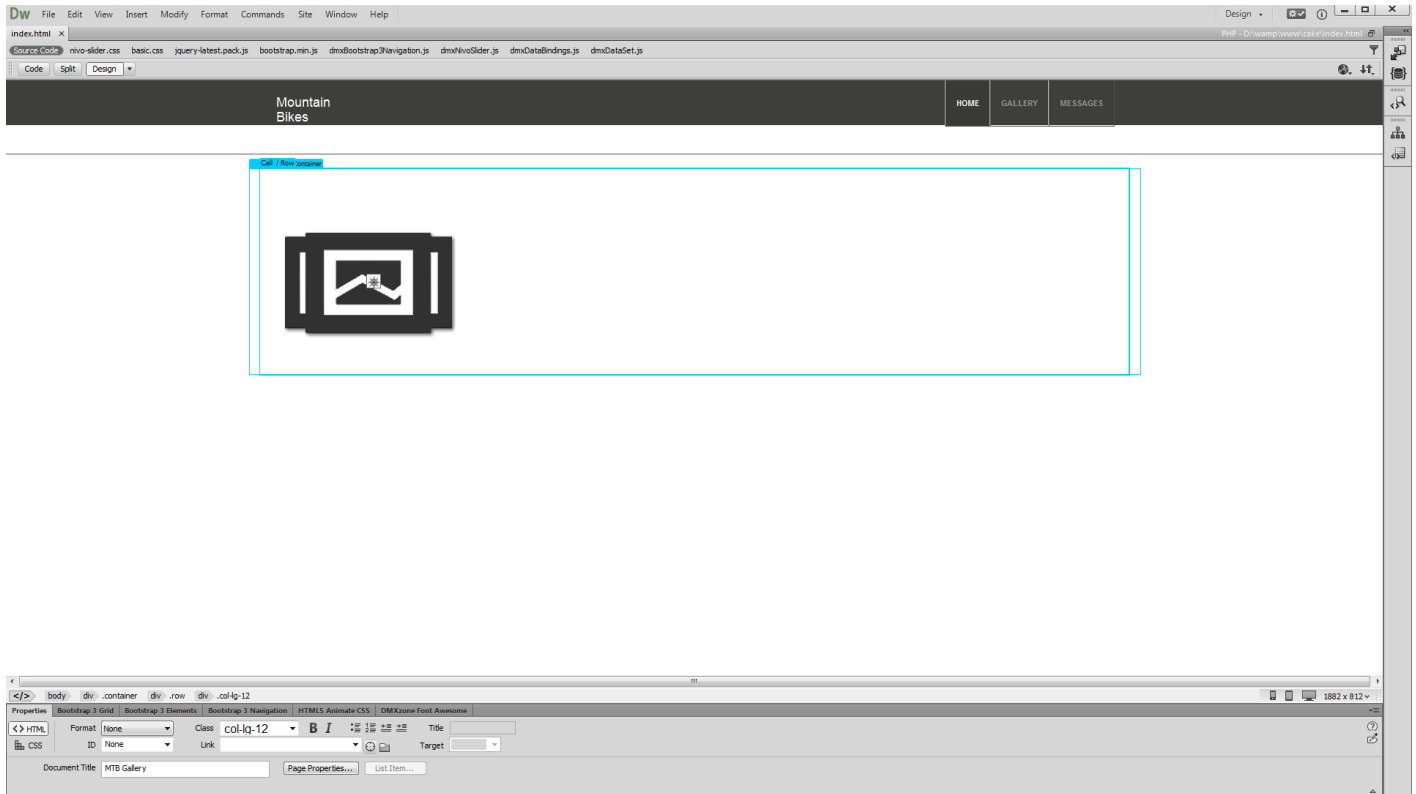
- We do the same with for the thumbnails but select the data element that contains our thumbnails paths. Do the same with the rest of the fields that you need to populate with dynamic data.



7. Set up the appearance of the gallery in the advanced tab and click OK. When you're done, you can preview the results.



8. Let's preview the result.



Advanced: Using CSS Image Gallery Control Behaviors

In this tutorial we will show you how to use [CSS Image Gallery 2](#) control behaviors.
*You can also check out the [video](#).

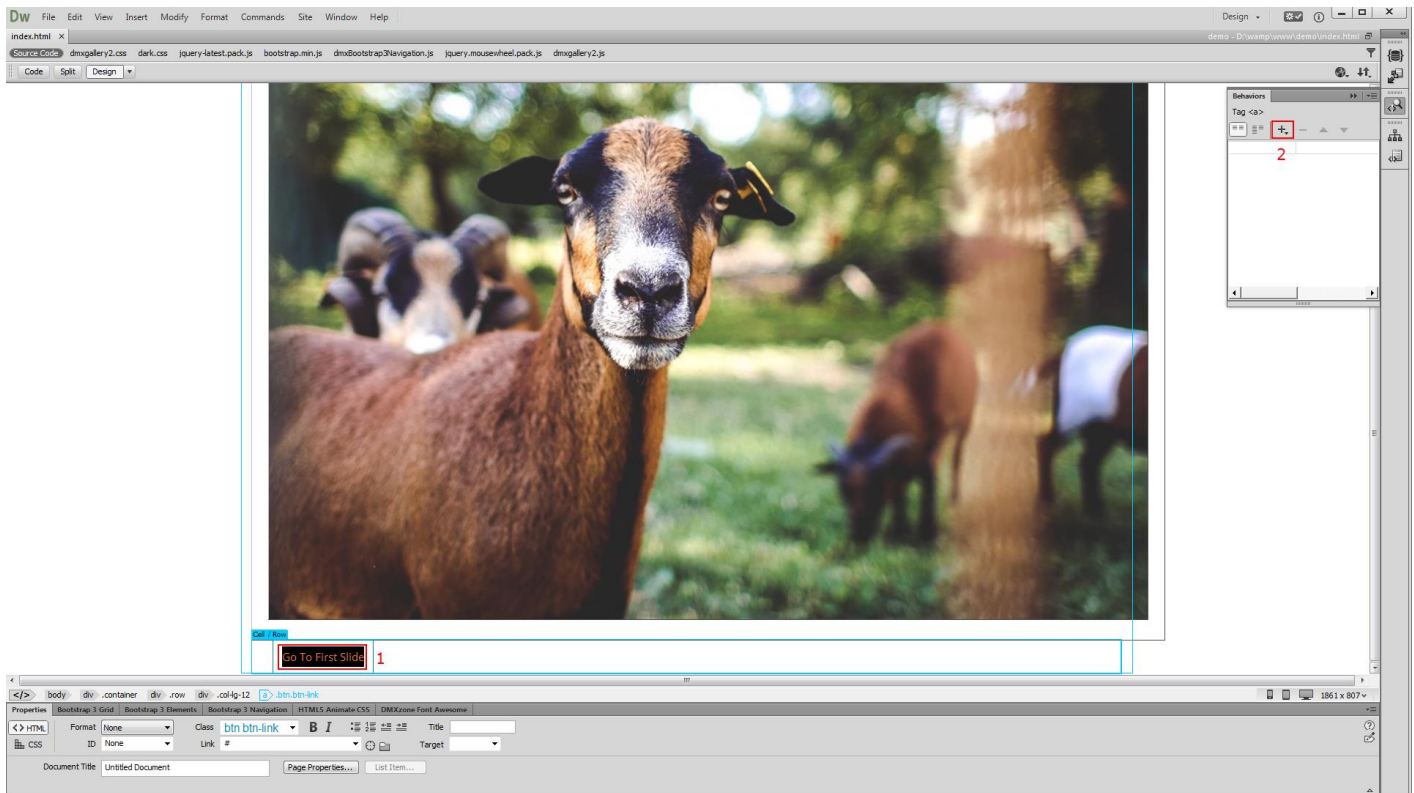


[Go To First Slide](#)

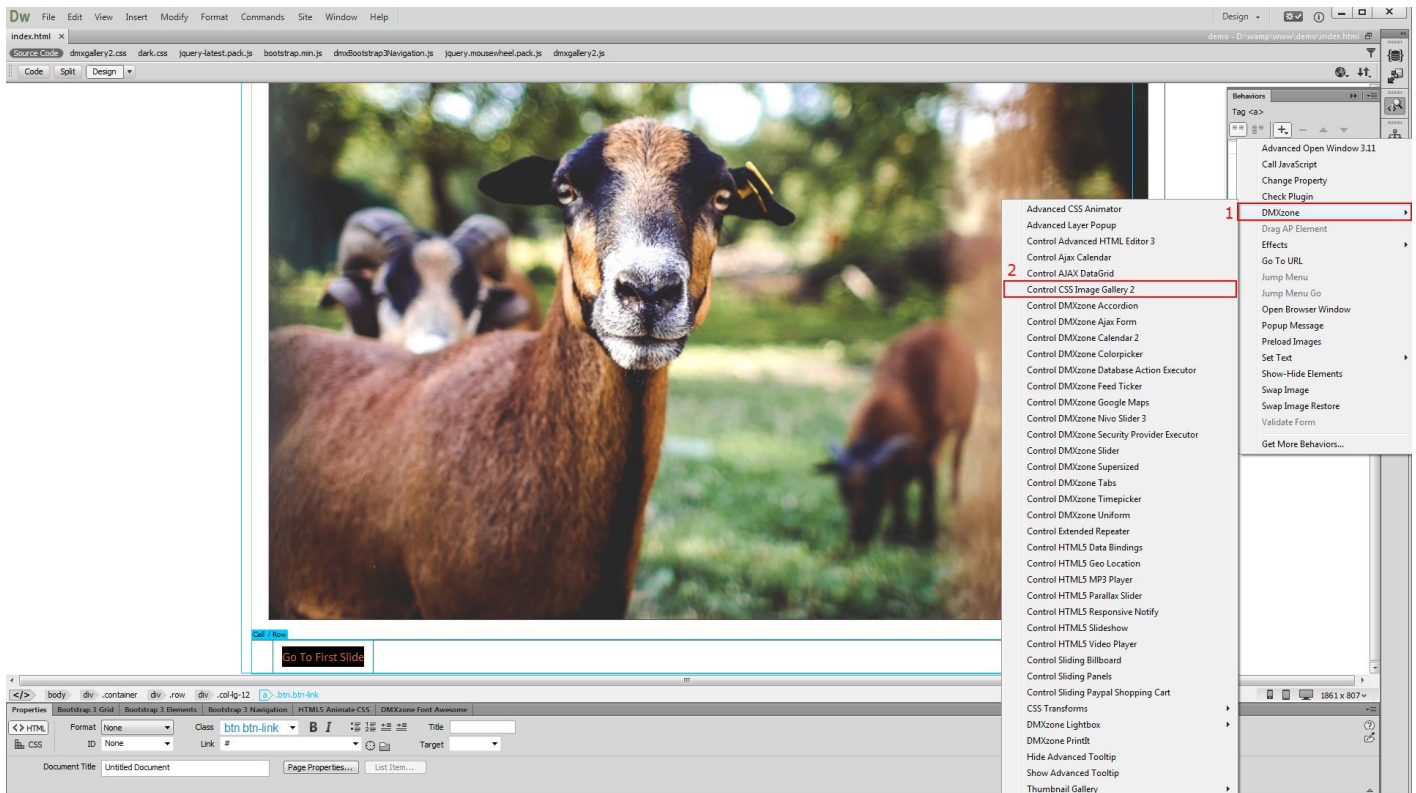


How to do it

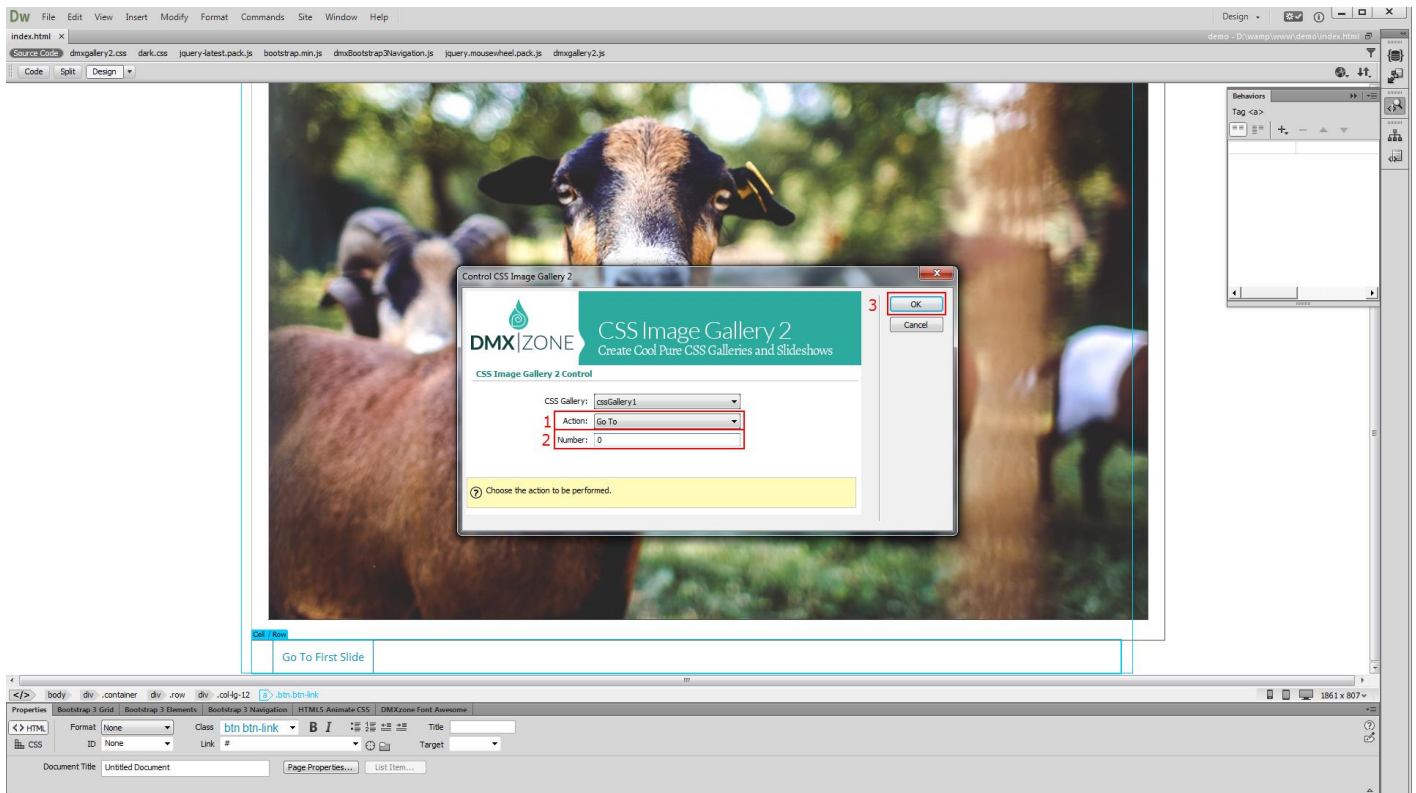
1. We added the CSS Image Gallery 2 on our page, containing a lot of images. We would like to allow our users to return to the first image, using a simple button. Select the **button (1)** and from the behaviors panel, click **add behavior button (2)**.



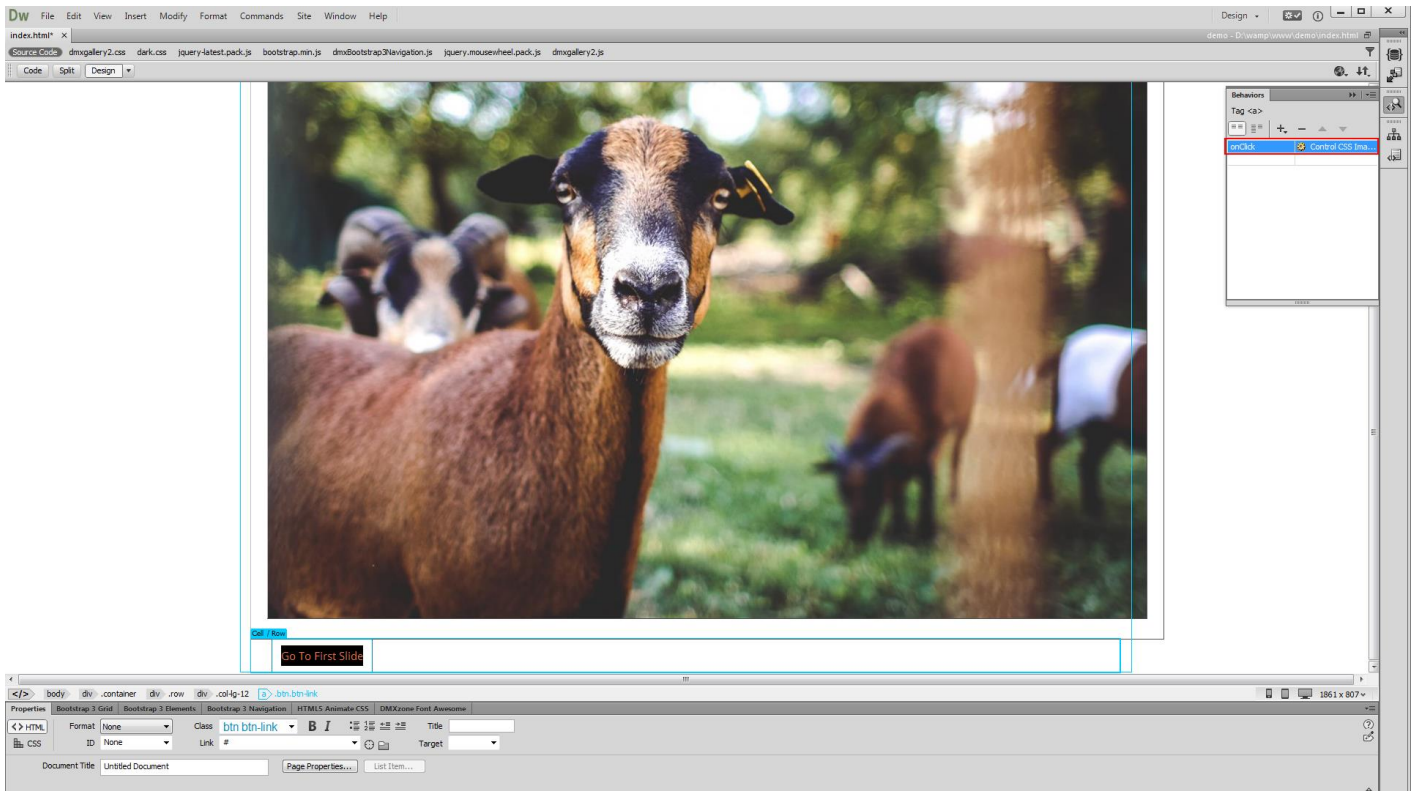
2. From the **DMXzone** menu (1) select **control CSS Image Gallery 2** (2) options.



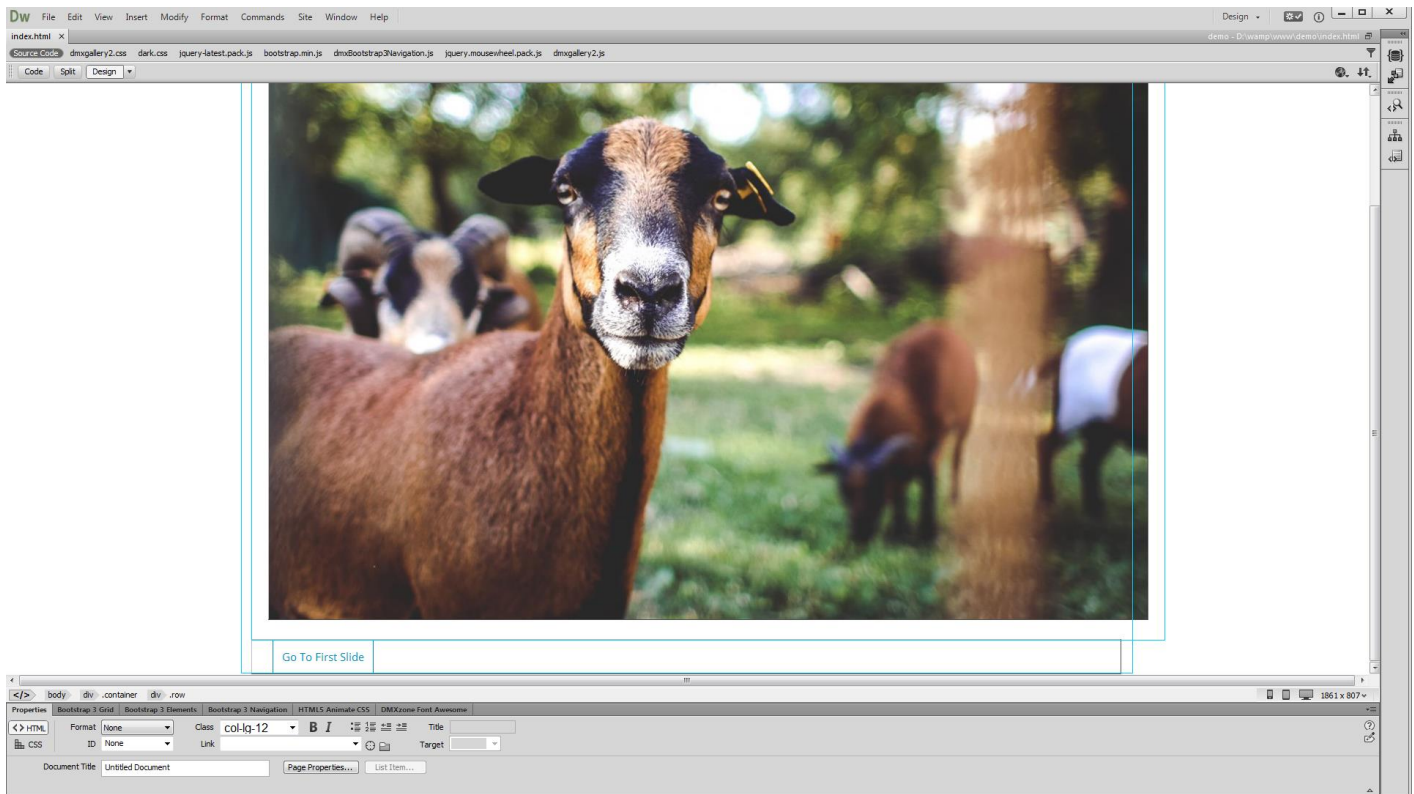
- Open the action menu and select **go to (1)**. Enter the slide number that you want to go to. For the first slide we **enter: 0 (2)**. When you're done, **apply the behavior (3)**.



4. Make sure that it is applied **on click**. We do the same with our next slide button this time we select the **next action**.



5. Now you can save your work and preview the results in the browser.



Video: Creating a Responsive CSS Image Gallery



With this [movie](#) we will show you how to add a responsive image gallery to your page using [CSS Image Gallery 2](#).

Video: CSS Image Gallery from Dynamic Image Source



With this [movie](#) we will show you how to create a fully responsive image gallery that uses dynamic database source for its images.

Video: Using CSS Image Gallery Control Behaviors



With this [movie](#) we will show you how to use [CSS Image Gallery 2](#) control behaviors.