

Table of contents

Table of contents	1
About HTML5 Data Bindings Browser Properties	2
Features in Detail.....	3
The Basics: Access the Browser Properties Tracking on Your Page	8
Advanced: Serve Retina Optimized Images to Retina Devices	12
Advanced: Change Content Depending on the Device Orientation.....	22
Advanced: Show or Hide Specific Elements on Your Page.....	27
Video: Access the Browser Properties Tracking on Your Page.....	34
Video: Serve Retina Optimized Images to Retina Devices	34
Video: Change Content Depending on the Device Orientation.....	34
Video: Show or Hide Specific Elements on Your Page	34

About HTML5 Data Bindings Browser Properties



Discover your visitor's browser properties and adjust your pages dynamically. Show different content based on browser resolution and language, special retina ready HD images or low resolution images for small devices and much more with the [Browser Properties](#) Add-on for [HTML5 Data Bindings](#).

The supplied data bindings contain rich information about the browser and device your visitor is using, so you can dynamically adjust your web site accordingly.

Features in Detail

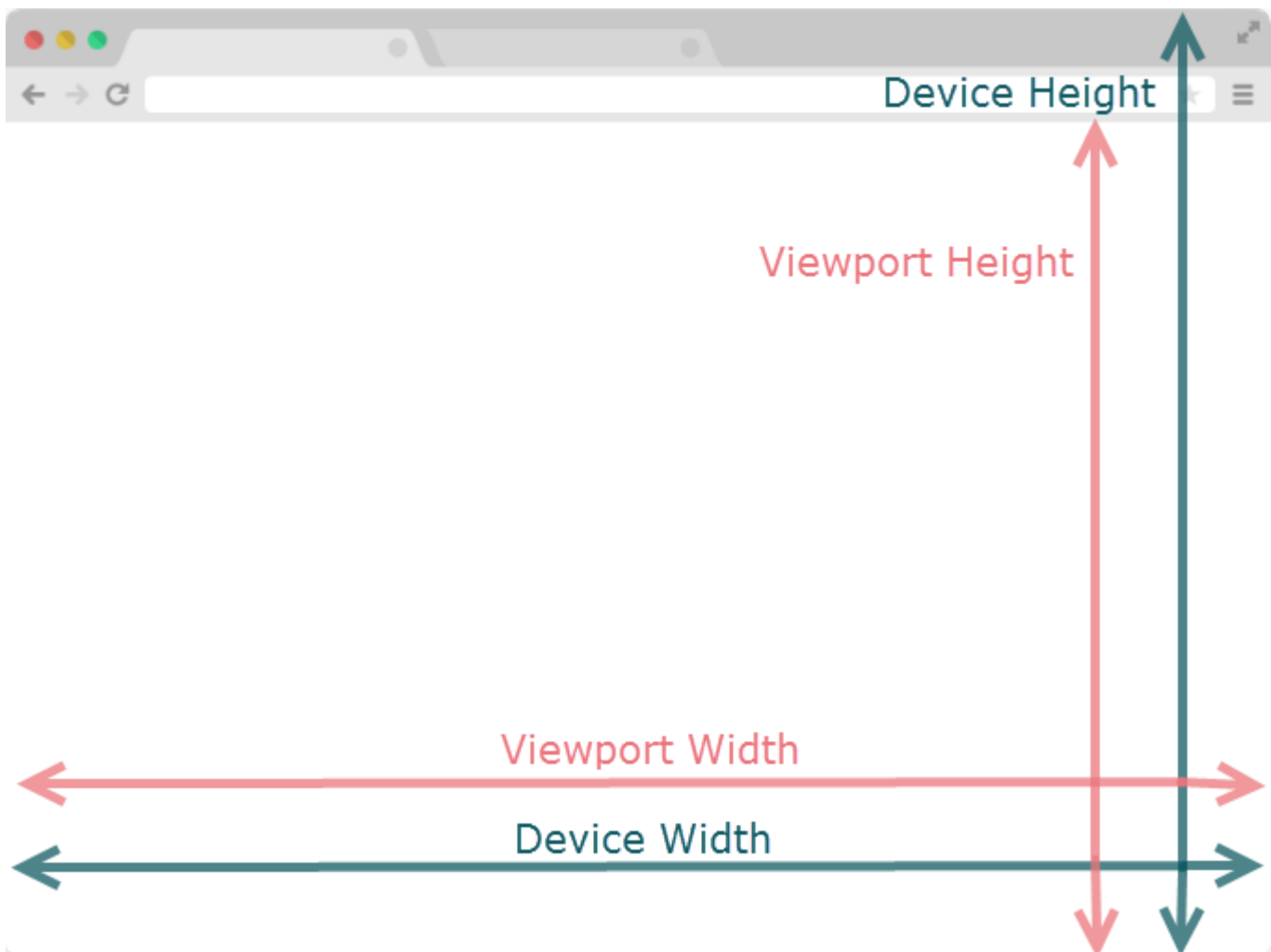
@userAgent -Contains information if a user is viewing your web site from a mobile or desktop web browser so that you can then auto detect and display the appropriate version of your web site. Using the user agent you can show different messages to your.

@language - Contains the language of the user's version of the browser. This way you can automatically redirect the user to the matching language version of your website, if available. Using the language, you can also show a specific message depending on the detected language, or even filter your data source.

@devicePixelRatio - Contains the device resolution, the ratio between physical device pixels and DPI-adjusted logical CSS pixels. Using the Device Pixel Ratio you can check if the device your site is loaded into is a Retina Display Device. If it is you can easily serve retina images to it, and if not you can serve the normal resolution non-retina images.

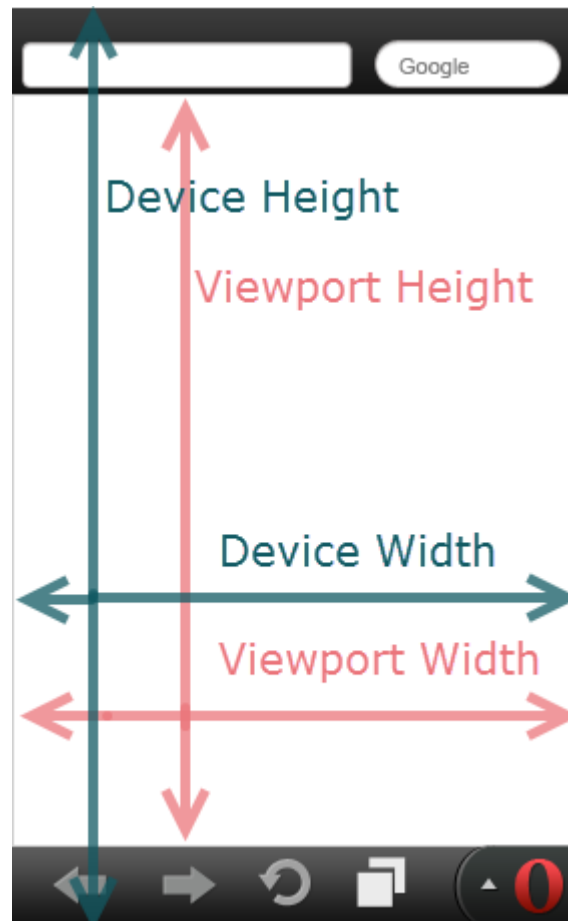
@deviceWidth - Contains the full width of the device, including the UI taskbars. Using the device width you can choose whether to hide or show specific elements on your page, change the style of an element etc.

@deviceHeight - Contains the full height of the device, including the UI taskbars. Using the device height you can choose whether to hide or show specific elements on your page, change the style of an element etc.



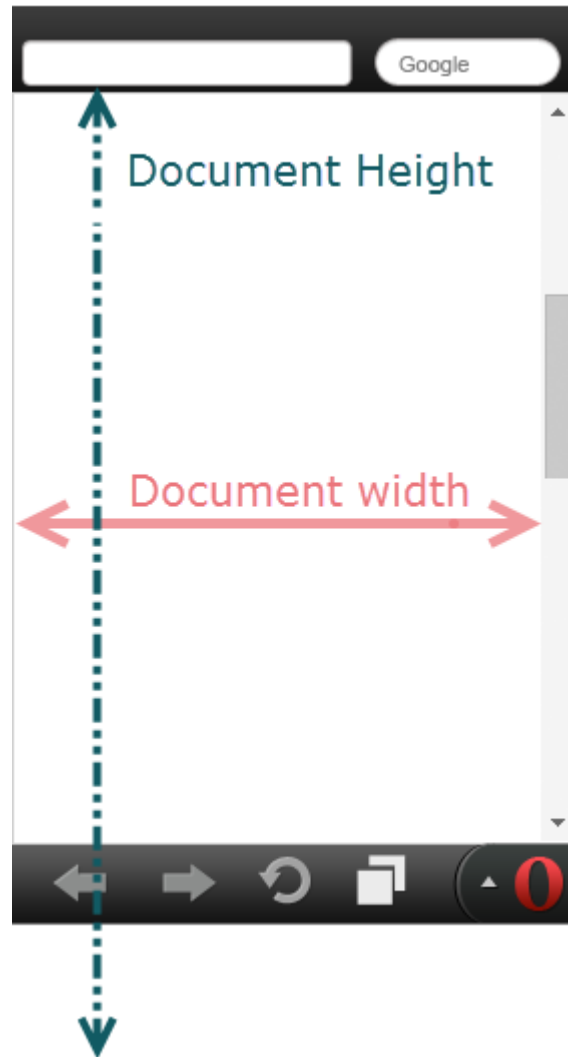
@viewportWidth - Contains the width of the device without the UI taskbars. Using the view-port width you can choose whether to hide or show specific elements on your page, change the style of an element etc.

@viewportHeight - Contains the height of the device without the UI taskbars. Using the view-port height you can choose whether to hide or show specific elements on your page, change the style of an element etc.

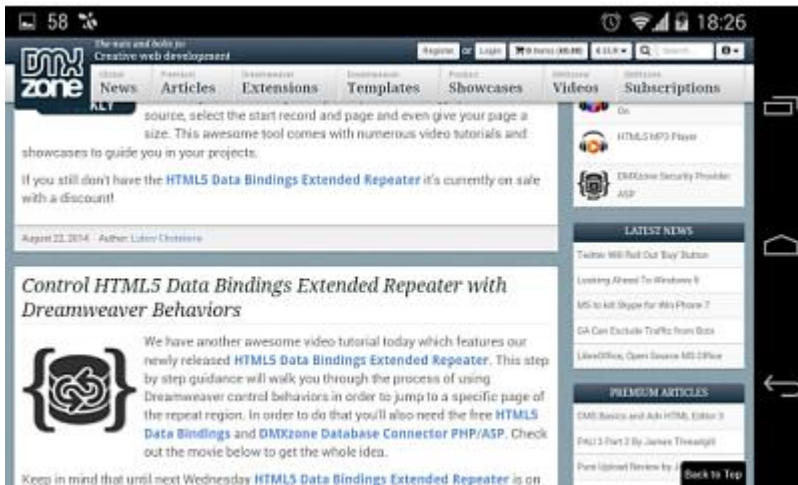


@documentWidth - Contains the width of the document.

@documentHeight - Contains the height of the document. It's particularly useful for scrolling apps.



@orientation - Contains the orientation change from landscape to portrait mode and vice versa. Using the orientation you can check the orientation of the device and change an element style, class, etc - for example, you can show a background image that is portrait-optimized or landscape-optimized.



Before you begin

Make sure to setup your site in Dreamweaver first before creating a page. If you don't know how to do that please [read this](#).

Installing the extension

Read the tutorial at <http://www.dmxzone.com/go/4671/how-to-install-extensions-from-dmxzone/>

Login, download the product, and look up your serial at <http://www.dmxzone.com/user/products>

Get the latest extension manager from Adobe at http://www.adobe.com/exchange/em_download/

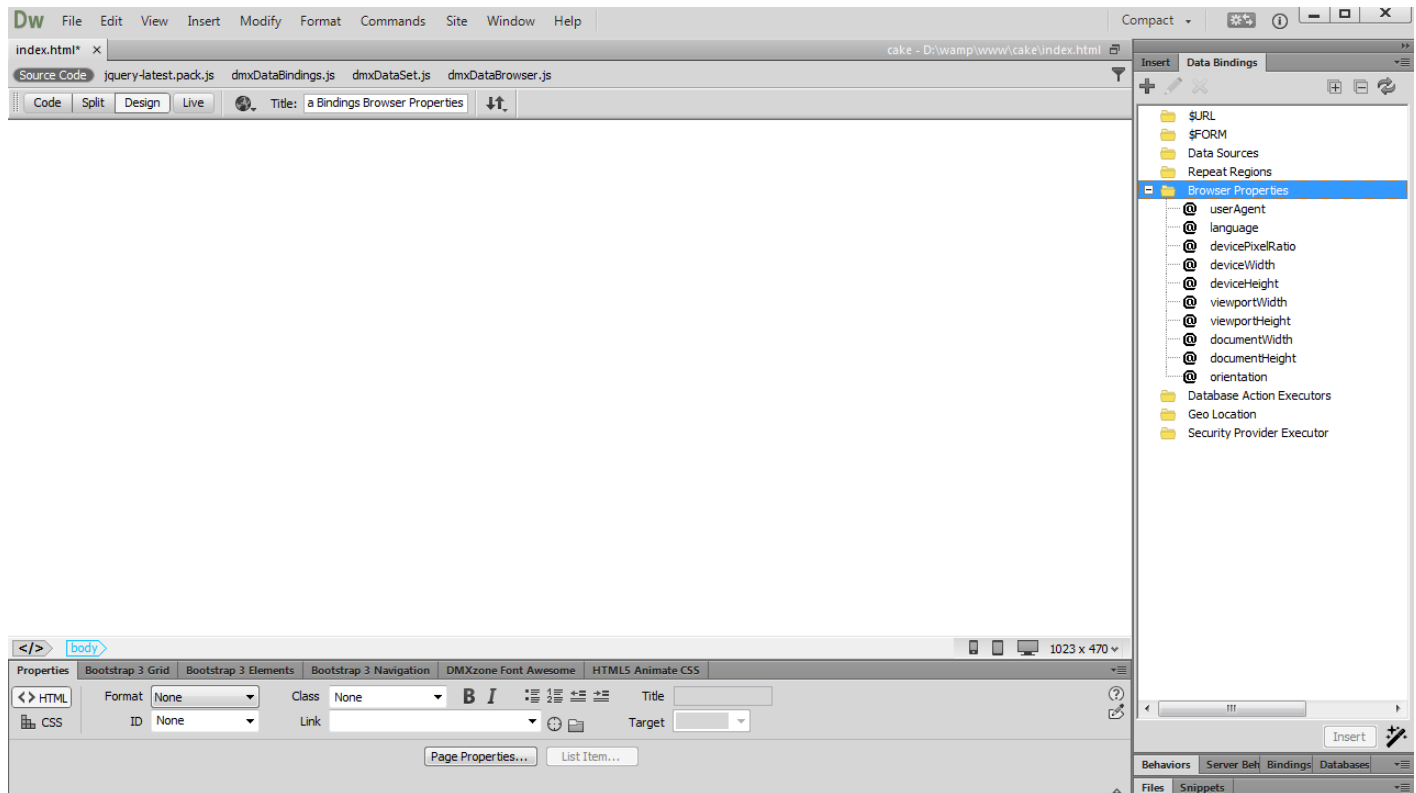
Open the .zxp file if you're using Dreamweaver CC or the .mxd file for Dreamweaver CS+ with the [DMXzone Extension Manager](#) and install the extension.

If you experience any problems contact our Live Support!

The Basics: Access the Browser Properties Tracking on Your Page

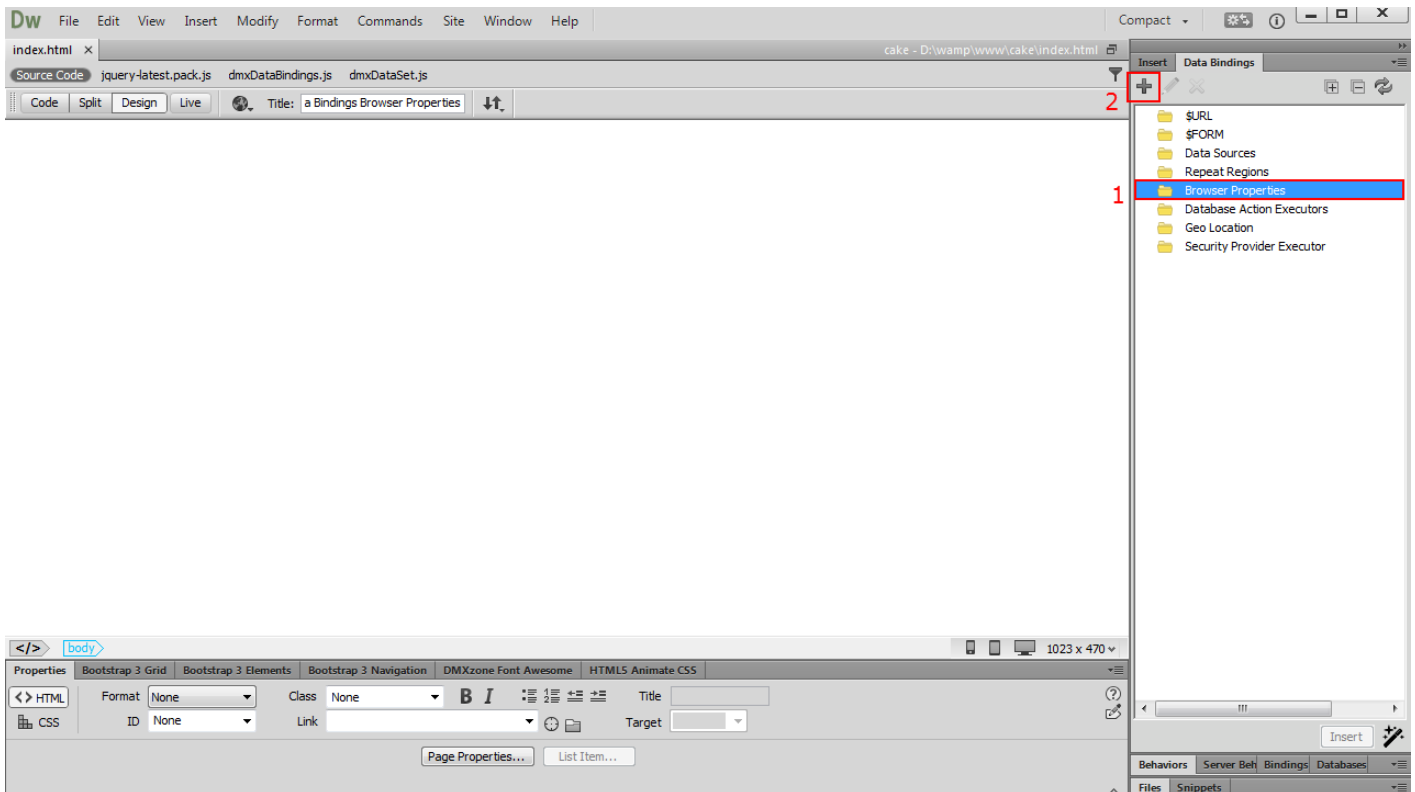
In this tutorial will show you how to use [HTML5 Data Bindings Browser Properties](#) in order to access the browser properties tracking on your page.

*You can also check out the [video](#).

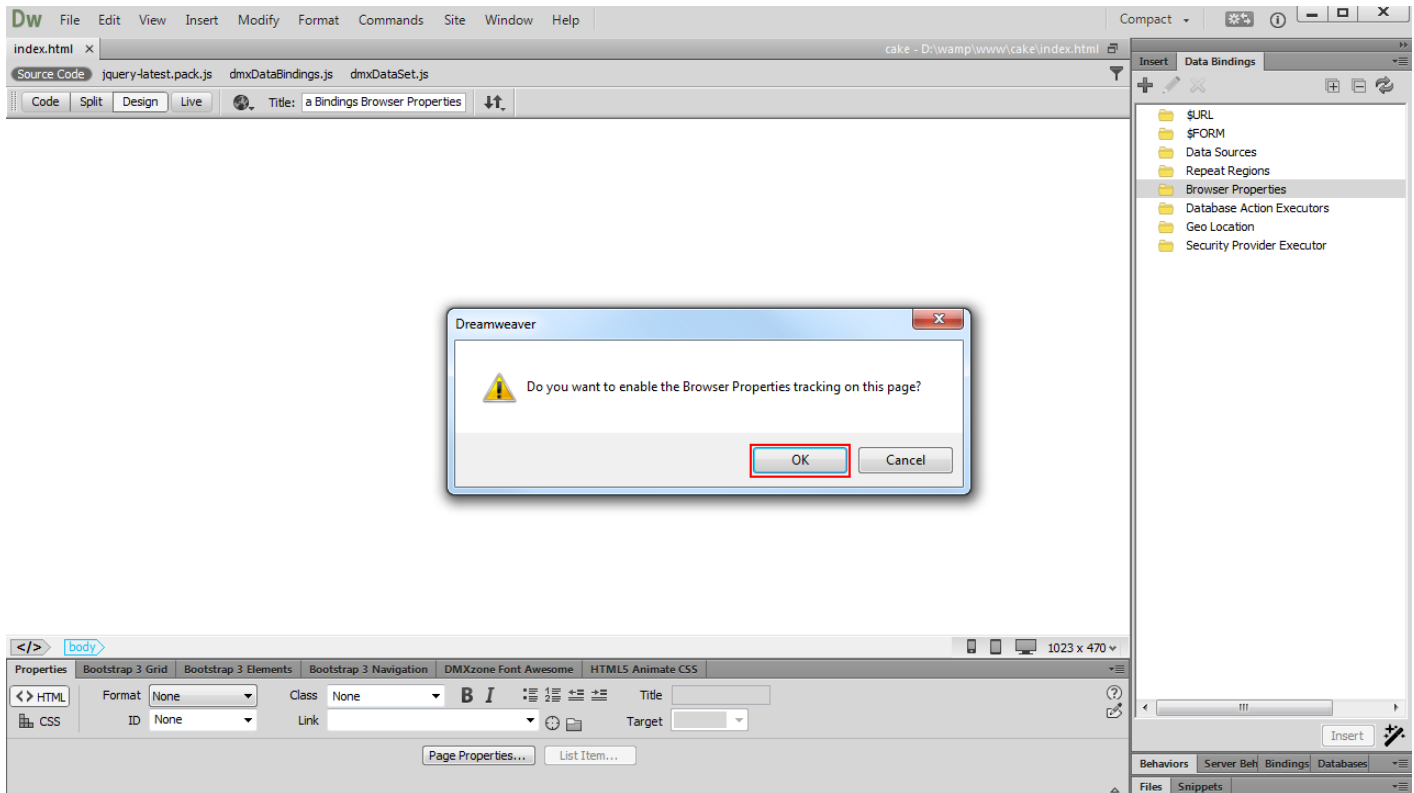


How to do it

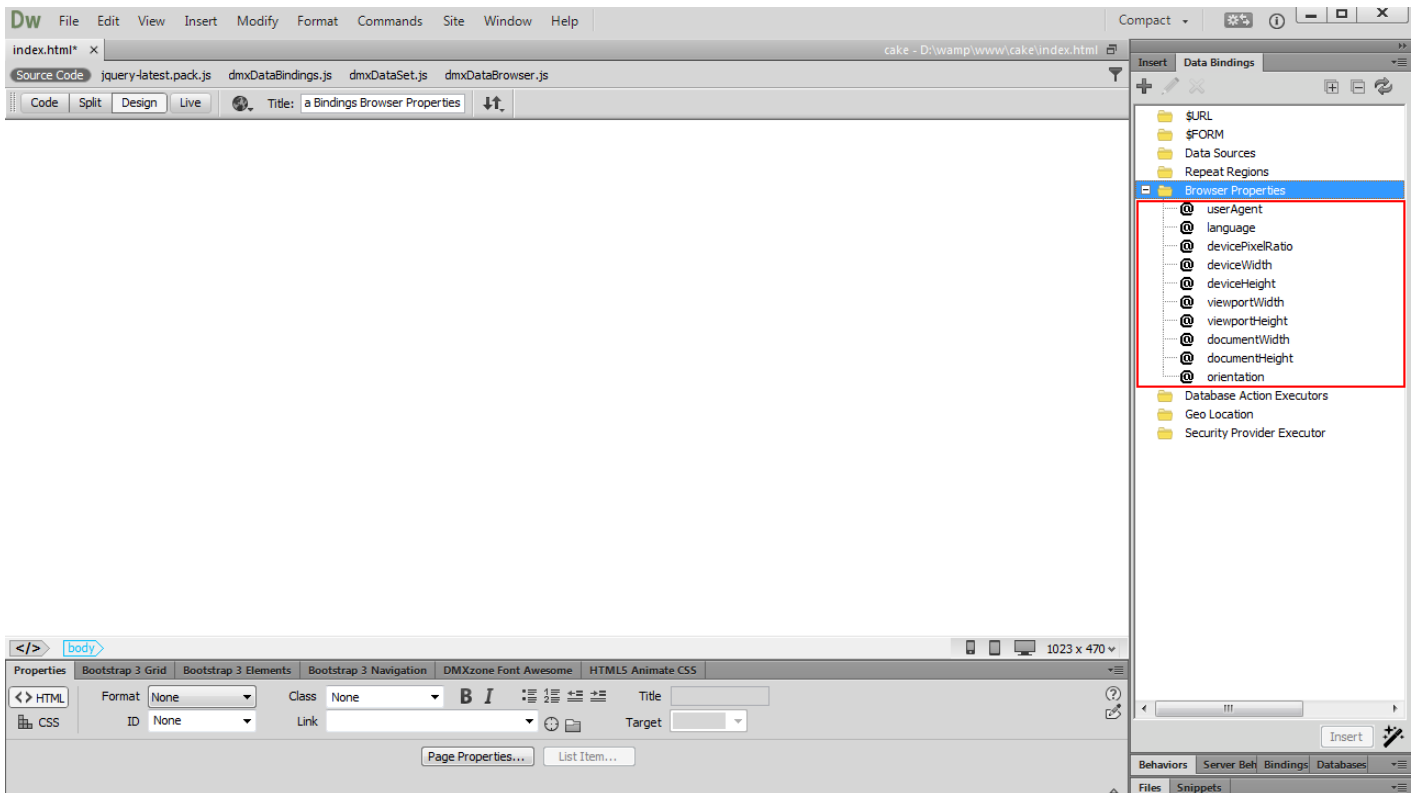
1. **HTML5 Data Bindings Browser Properties** options are located inside the data bindings floating panel. First, **select browser properties** inside the HTML5 Data Bindings tree **(1)** and **click the add button (2)**.



2. A Dreamweaver notification window is asking you if you want to enable the browser properties tracking on your page. Click the **OK button**. Now you can expand the Browser Properties inside the Data Bindings floating panel.



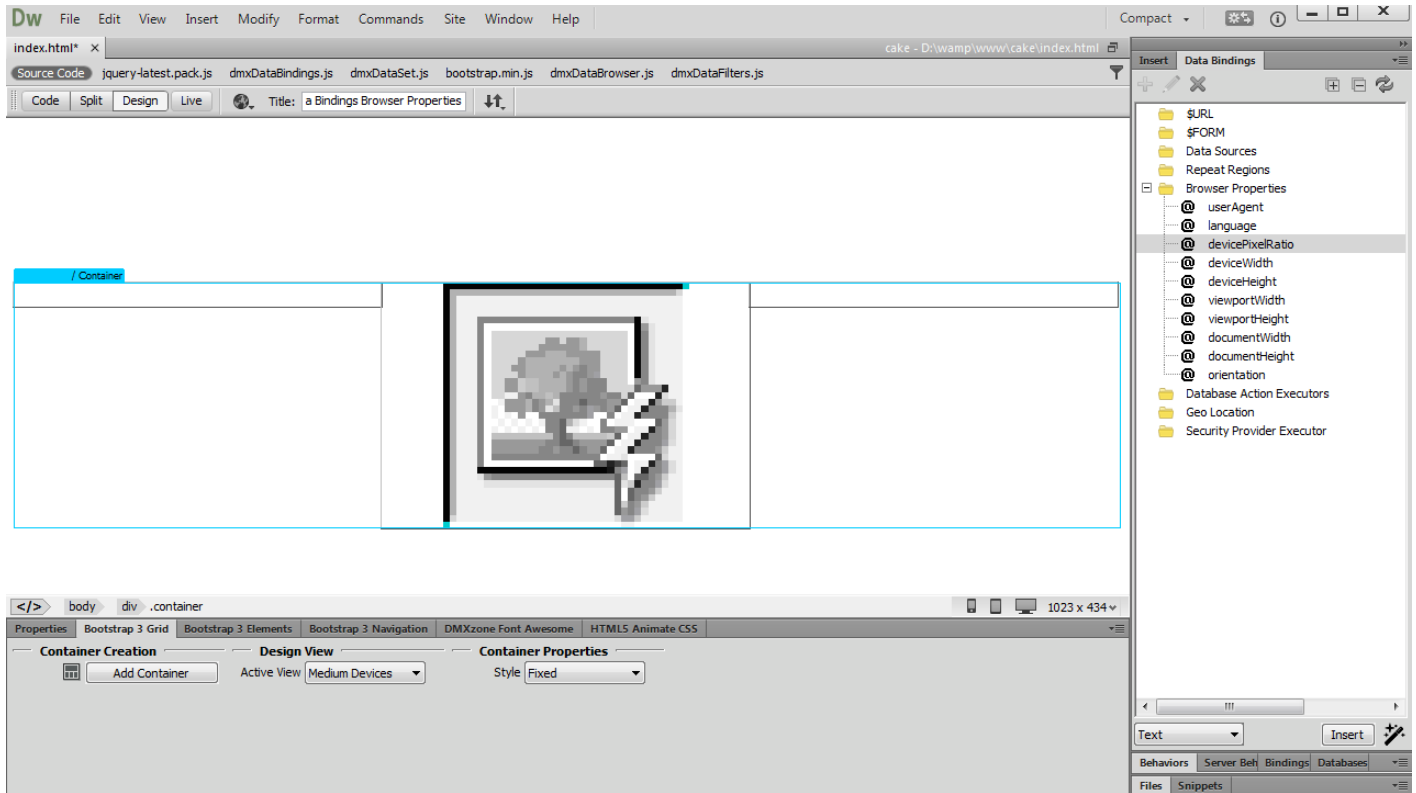
- Here you can find all of the **browser properties available as bindings**. Now you can show and hide specific areas depending on the browser window size, show retina images when retina browser is used or change layout when orientation is changed, and much more!



Advanced: Serve Retina Optimized Images to Retina Devices

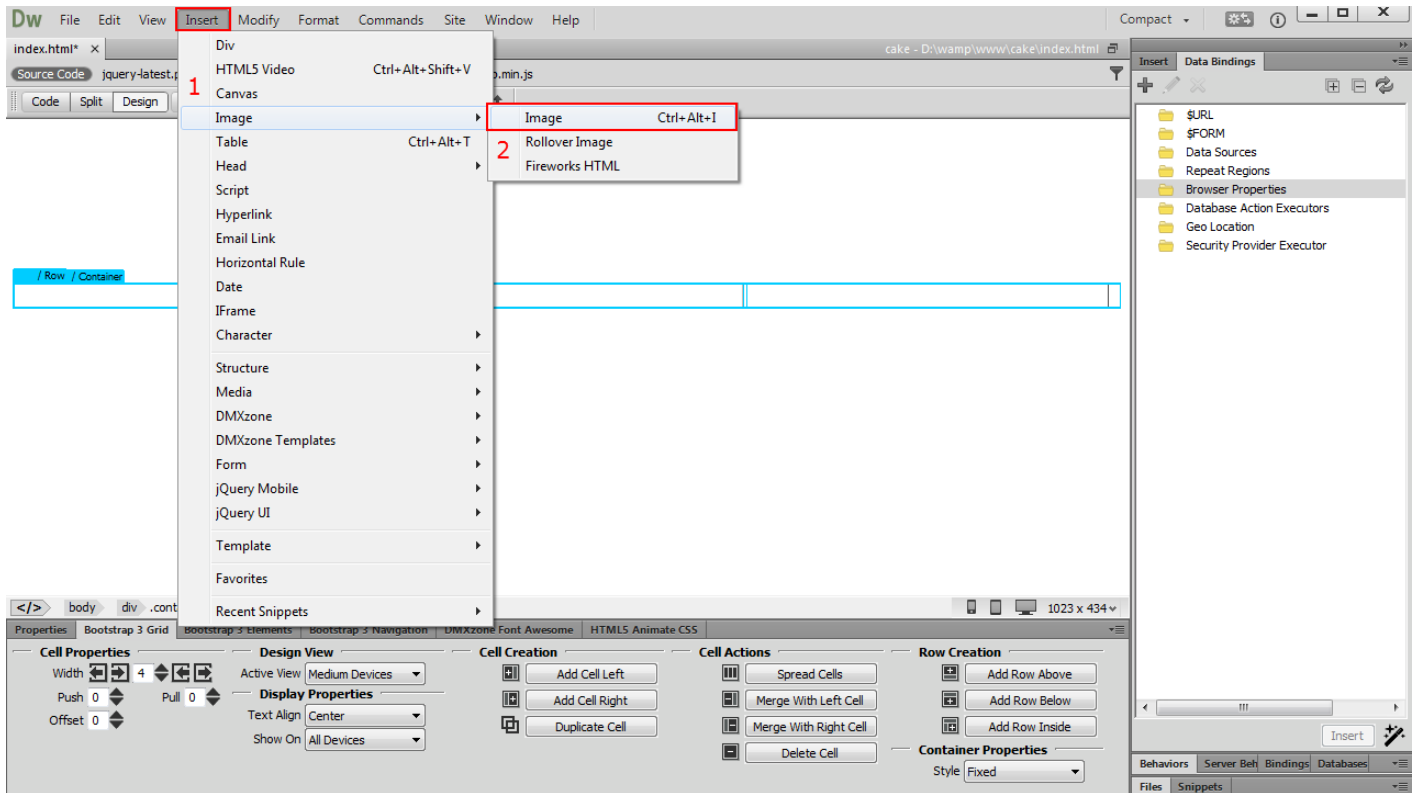
In this tutorial we will show you how to serve retina optimized images to retina devices, using [HTML5 Data Bindings Browser Properties](#).

*You can also check out the [video](#).

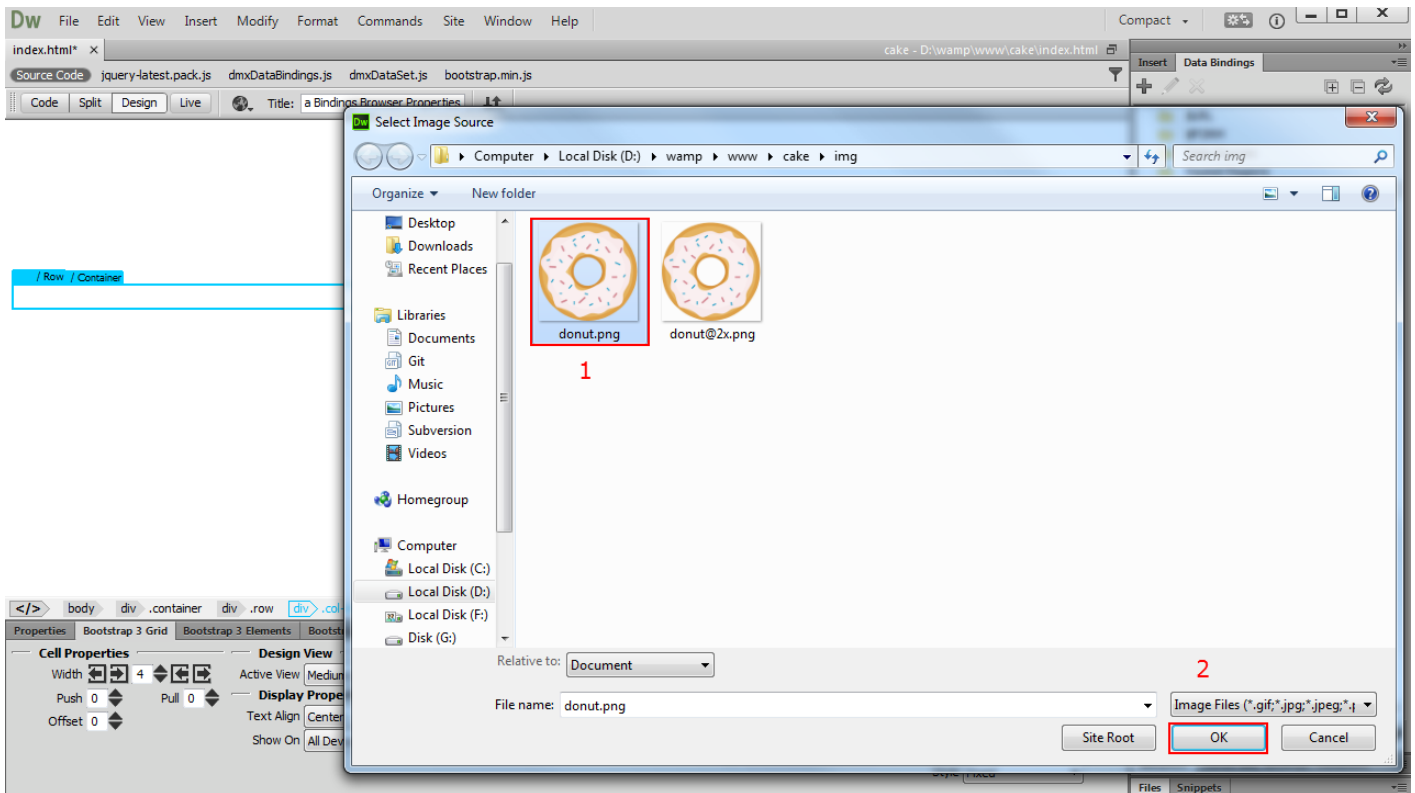


How to do it

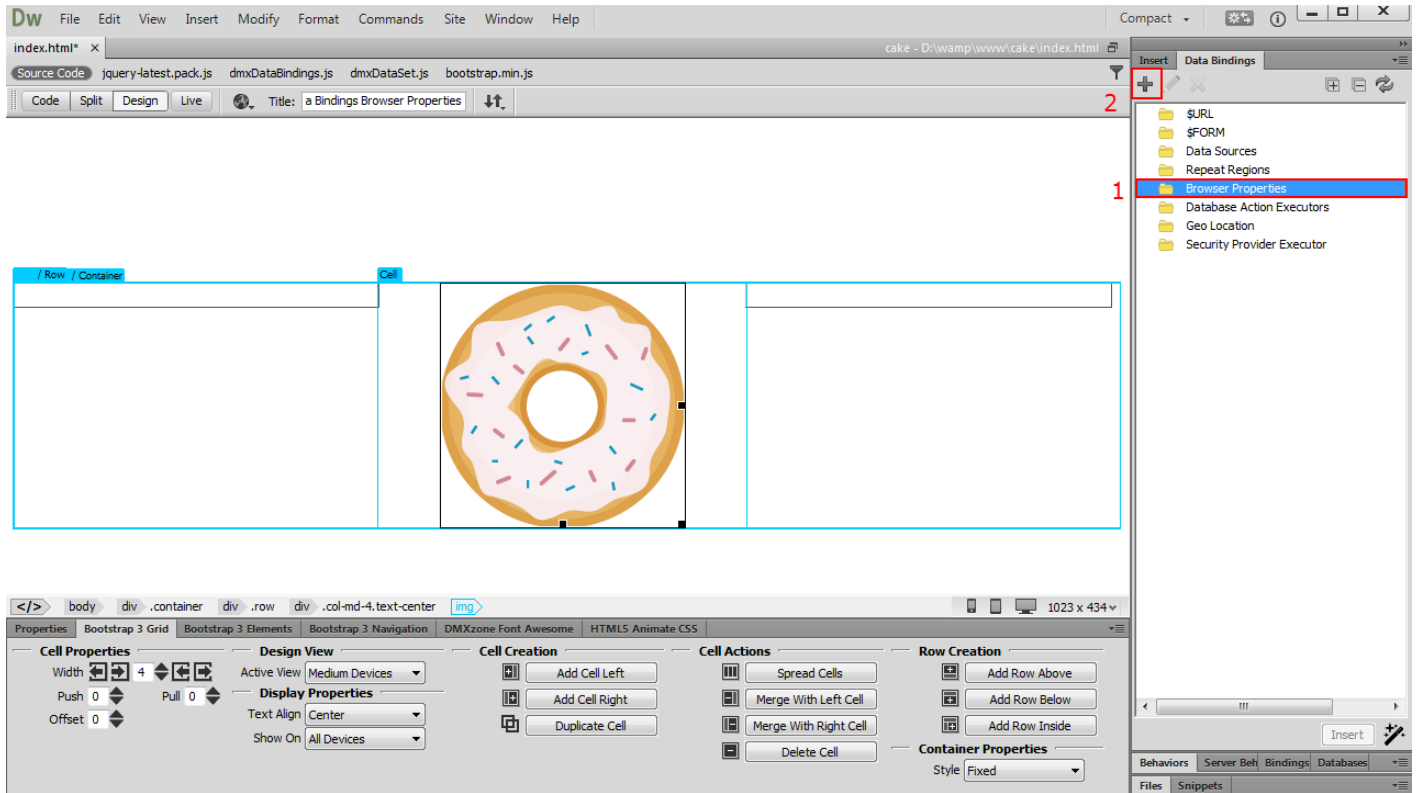
1. We have created a simple page layout. We want to show a donut image to the visitors of our web site. We want to be sure that when users with retina displays visit our web site, they see a sharp and crisp image. First we are going to add a normal resolution image that will be served to non-retina displays. Open the **insert menu (1)** and **select image menu item (2)**.



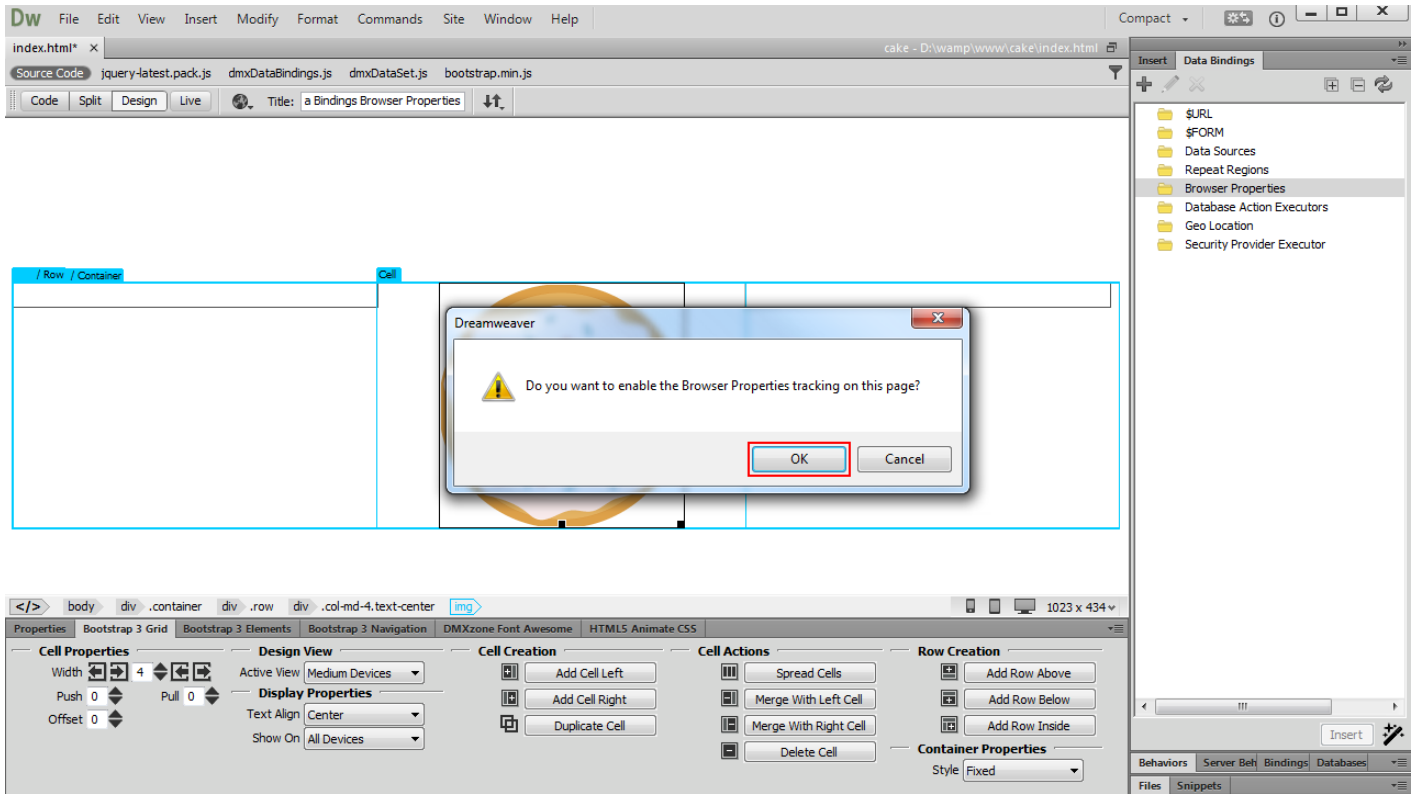
2. Browse to your images folder and select your **normal resolution image (1)** and **click the OK button (2)**.



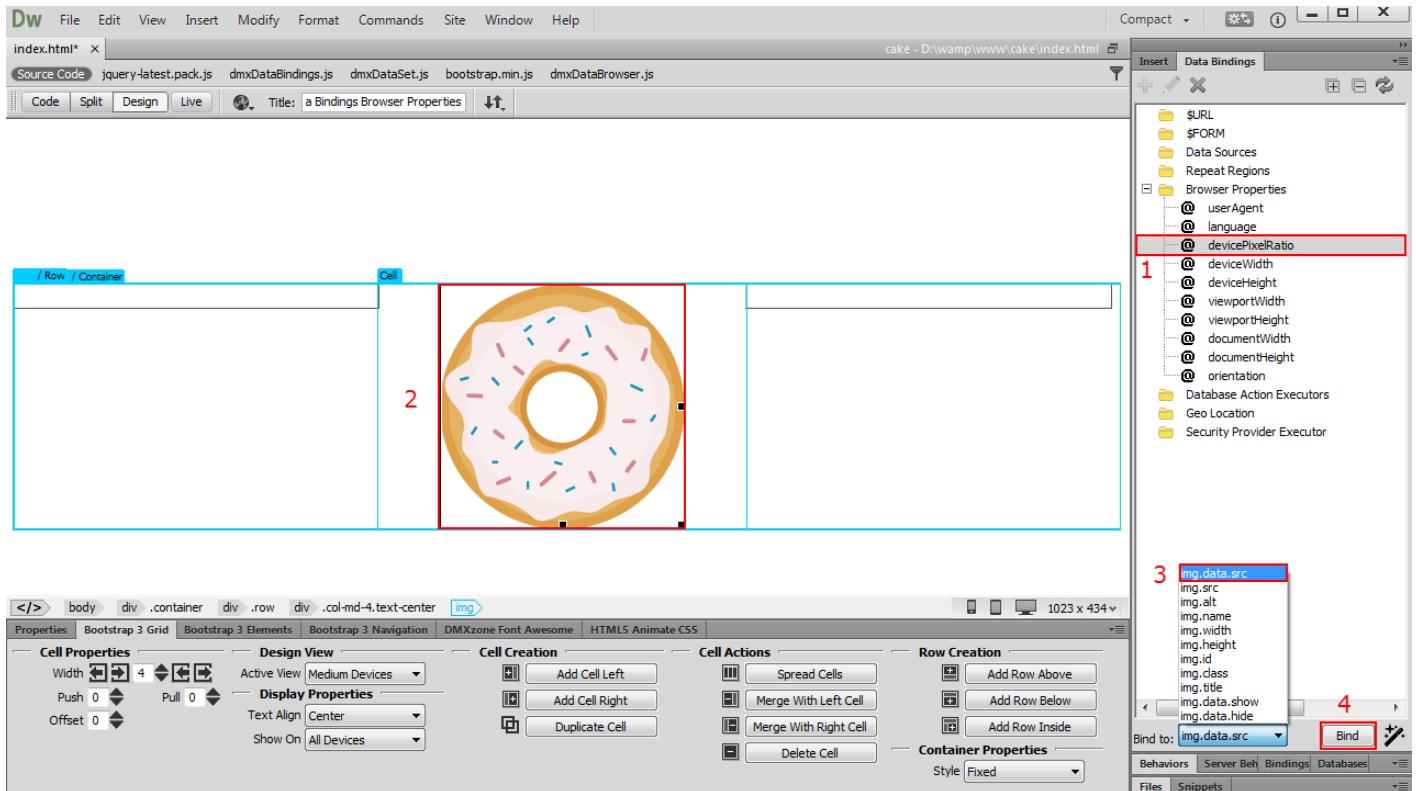
- Now we are going to add a device pixel ratio check on the page. This way will detect if the device screen is retina or non-retina. Select **browser properties** inside the HTML5 Data Bindings floating panel (1) and click the **add button** (2).



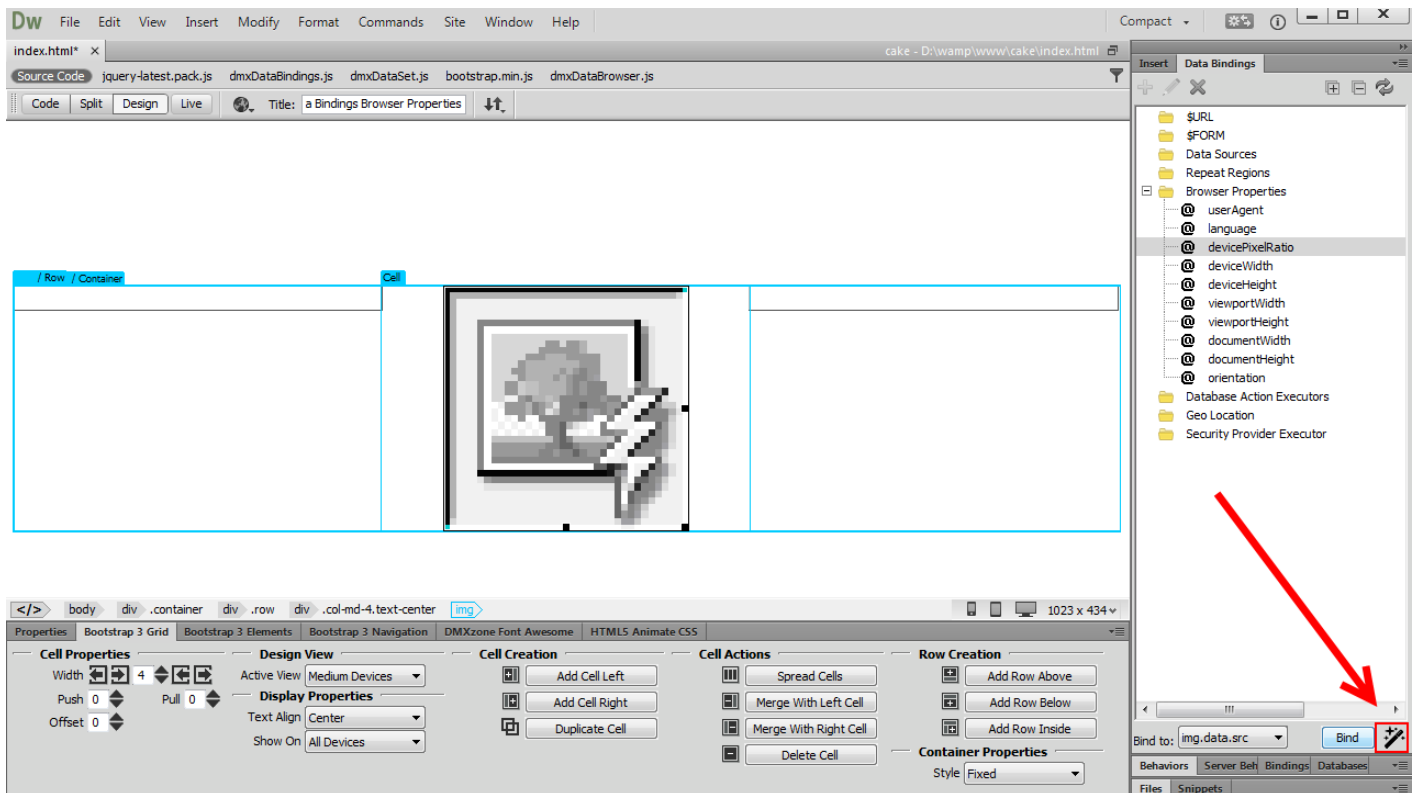
4. Enable the browser properties by **clicking the OK button**.



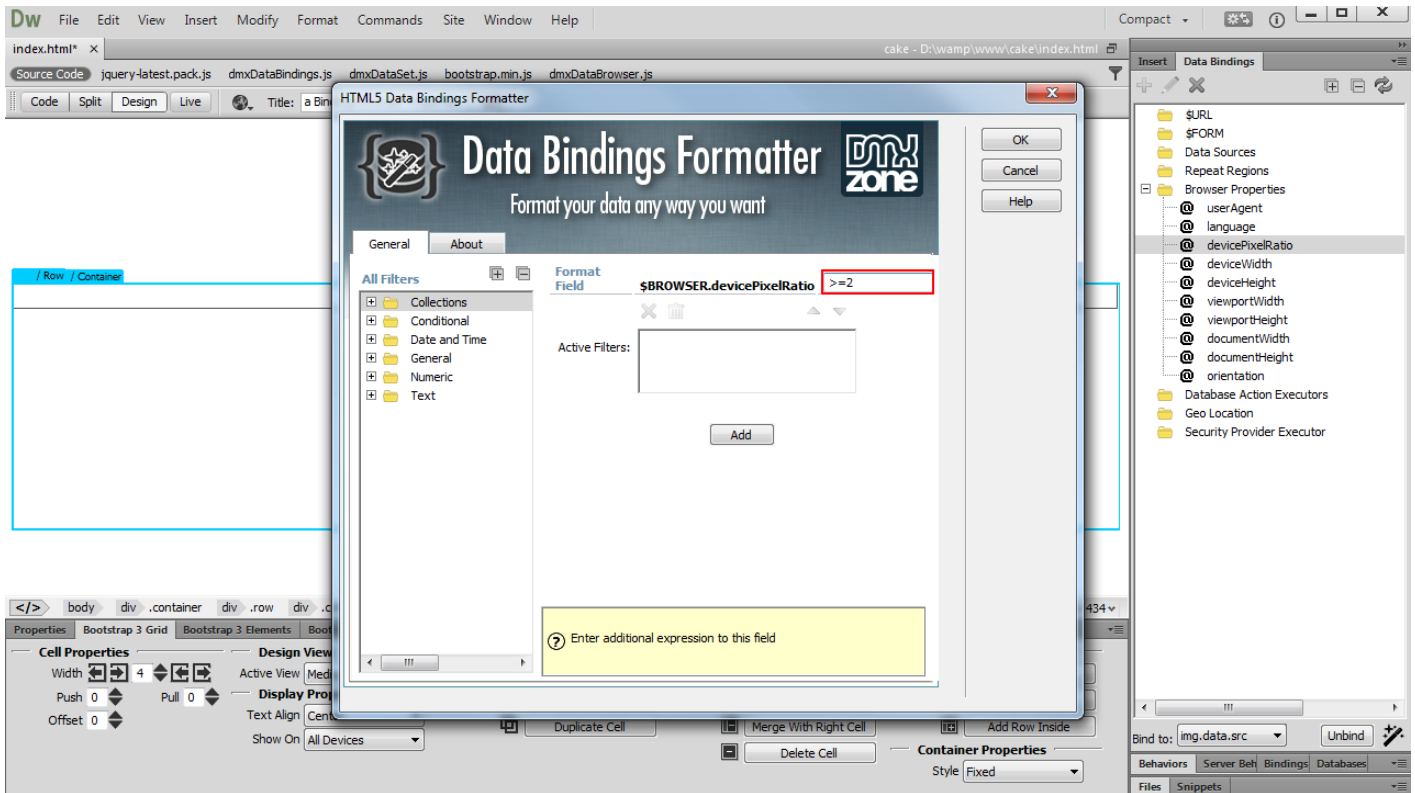
- Select the **device pixel ratio binding**, located under browser properties (1), select the **image** that you added on the page (2) and from the bind to menu, choose the **image data source** (3) and bind it (4).



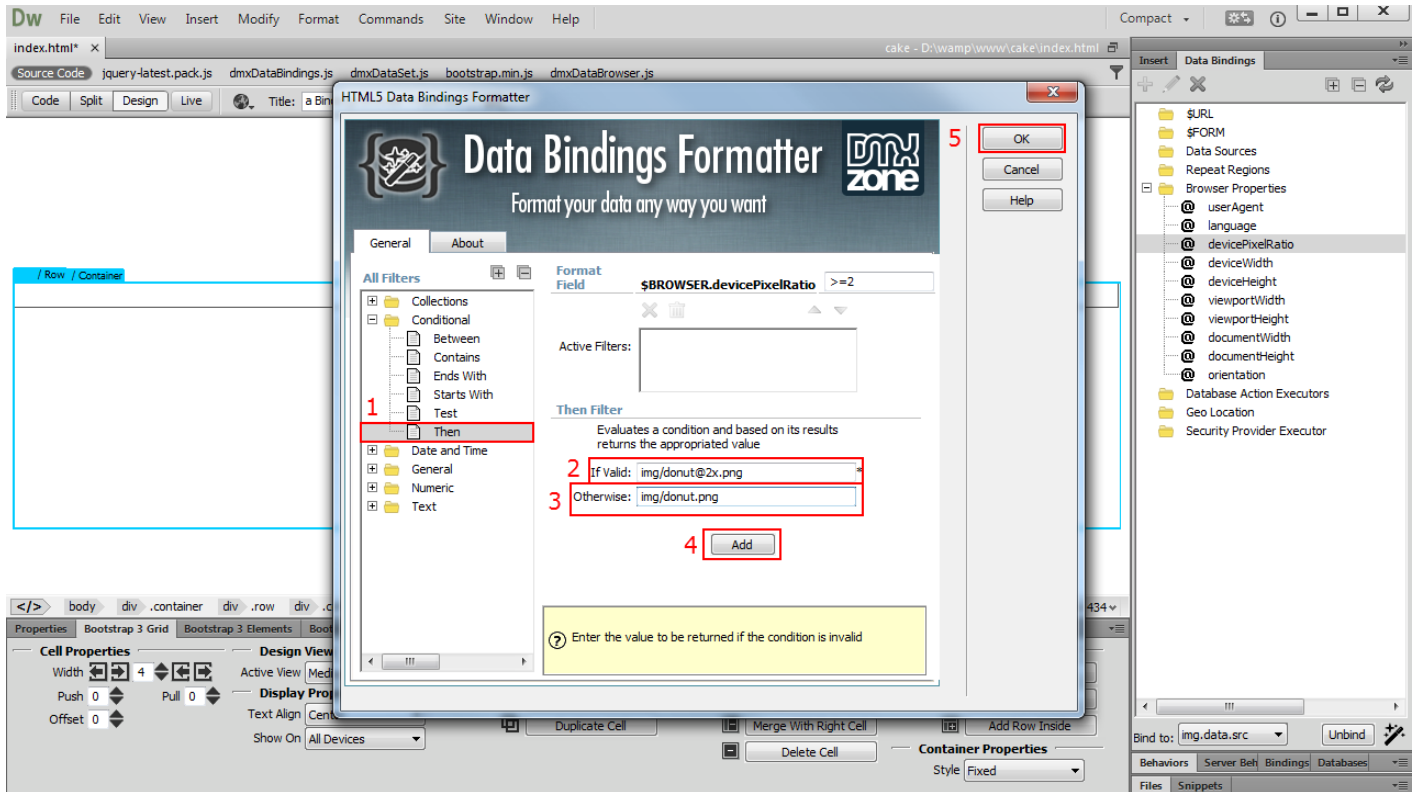
- While the image is still selected, click the **Format Data Binding** button. Note that you need to have the [HTML5 Data Bindings Formatter](#) installed, in order to see this button.



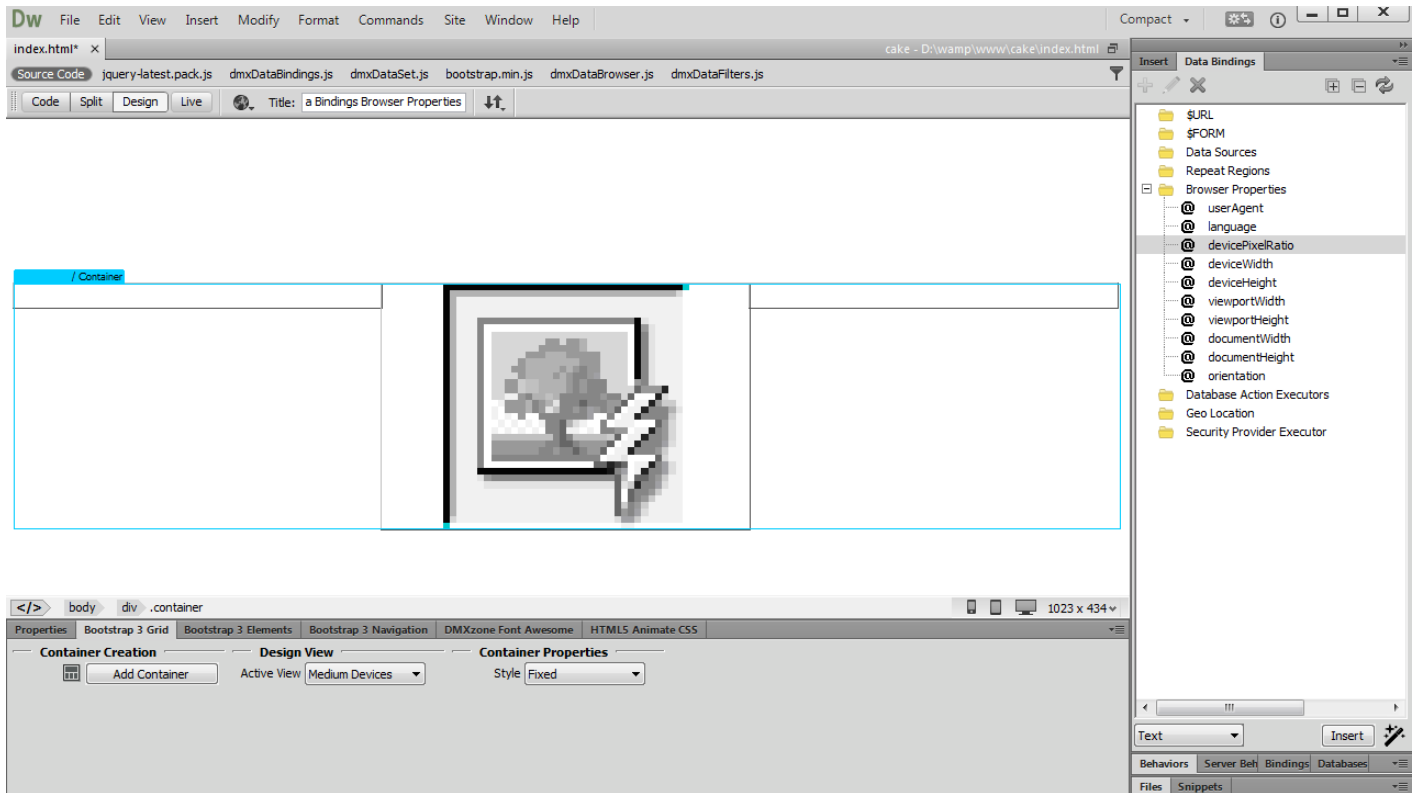
7. Devices, with retina displays, have a pixel ratio that is equal or greater than 2. We **enter ≥ 2 condition** into the format field.



8. Now, expand the conditional filters and **select then (1)**. If the device pixel ratio is greater or equal to 2, we want the retina image to be served so we enter **the path to our retina image (2)**. Otherwise, if the device pixel ratio is < 2, we want to display the normal-resolution image so we enter **the path to the normal-resolution image (3)**. Then we **apply the filter (4)** and click the **OK button (5)**.



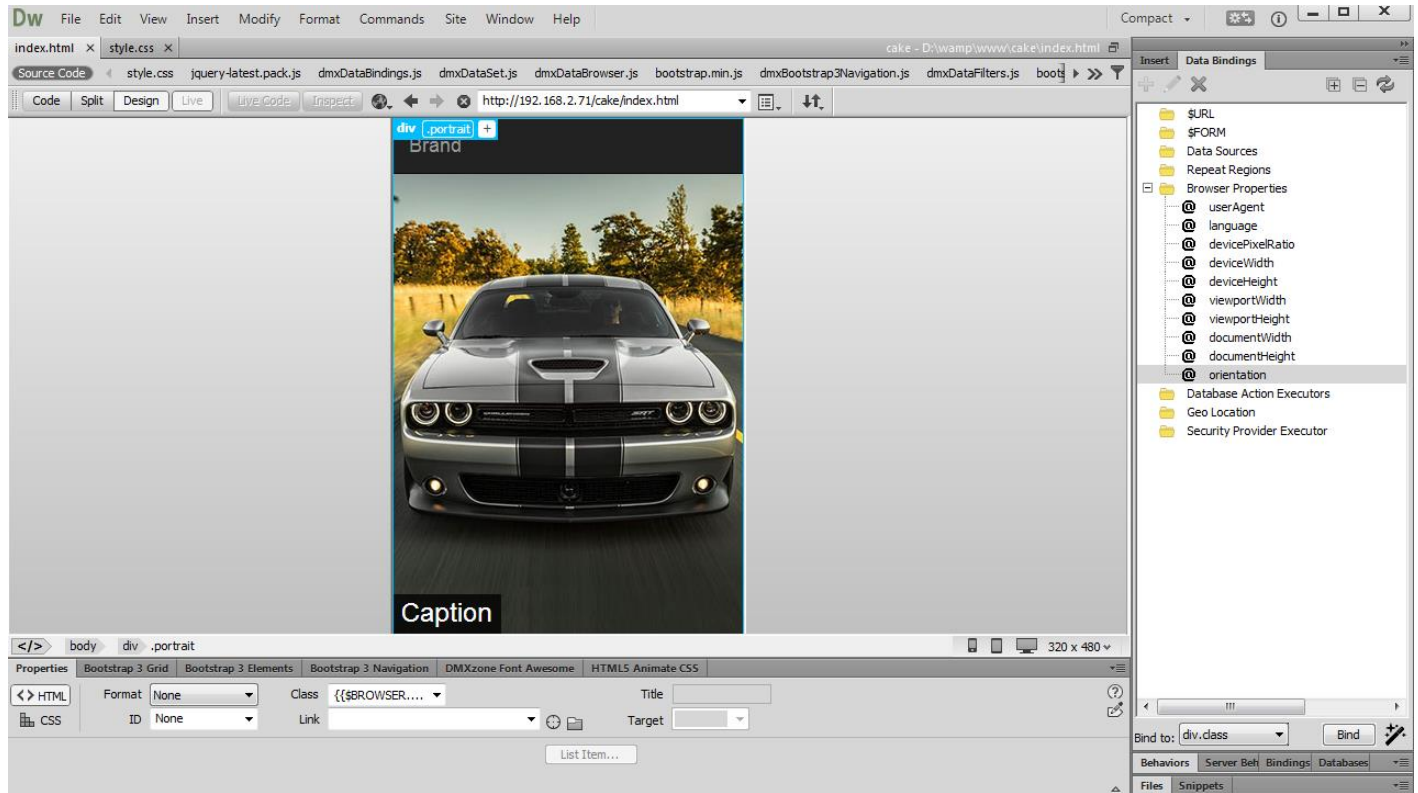
- Now you can save your work and test the page on a retina and non-retina devices. That's how easy it is to serve retina optimized images to retina devices, using **HTML5 Data Bindings Browser Properties**.



Advanced: Change Content Depending on the Device Orientation

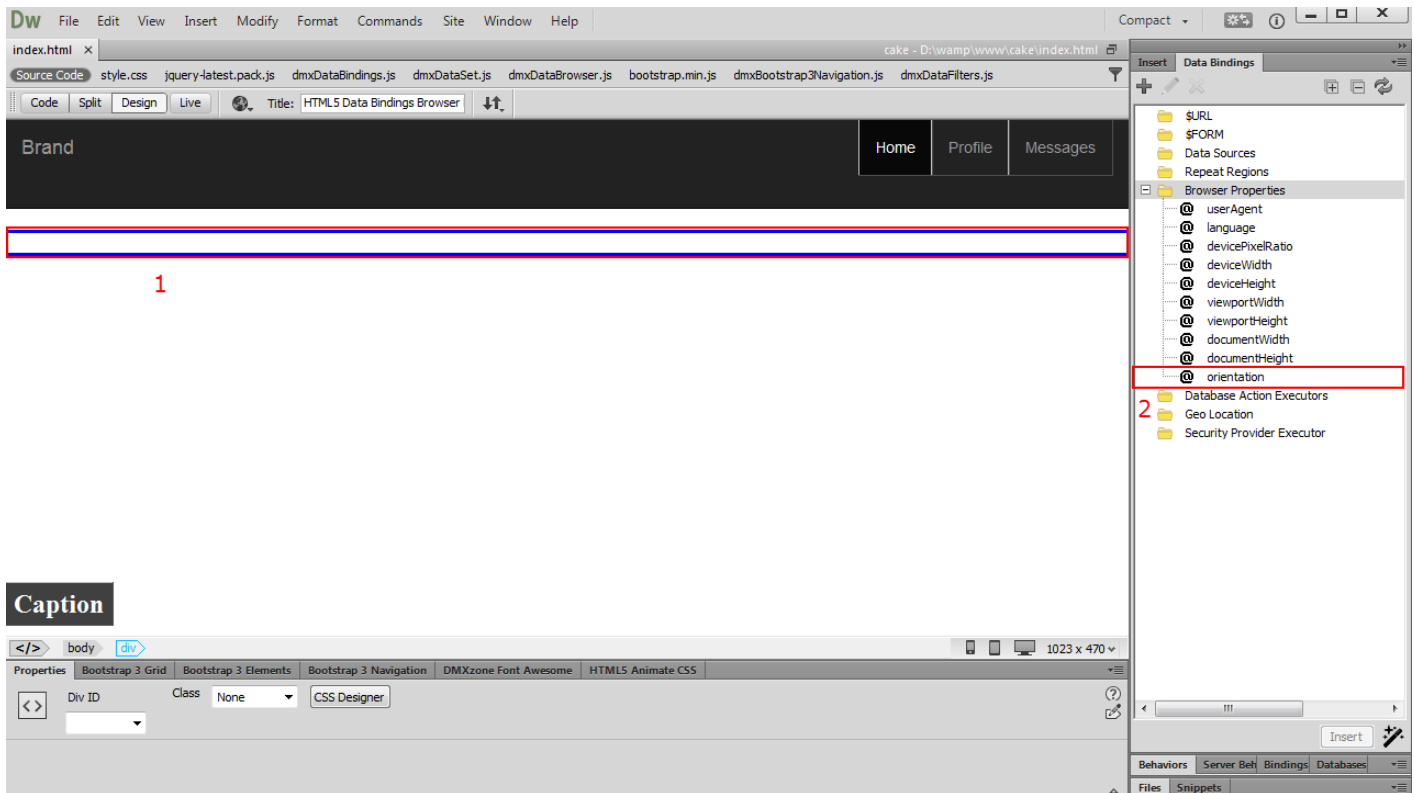
In this tutorial we will show you how to change your web site content, according to the visitor's device orientation.

*You can also check out the [video](#).



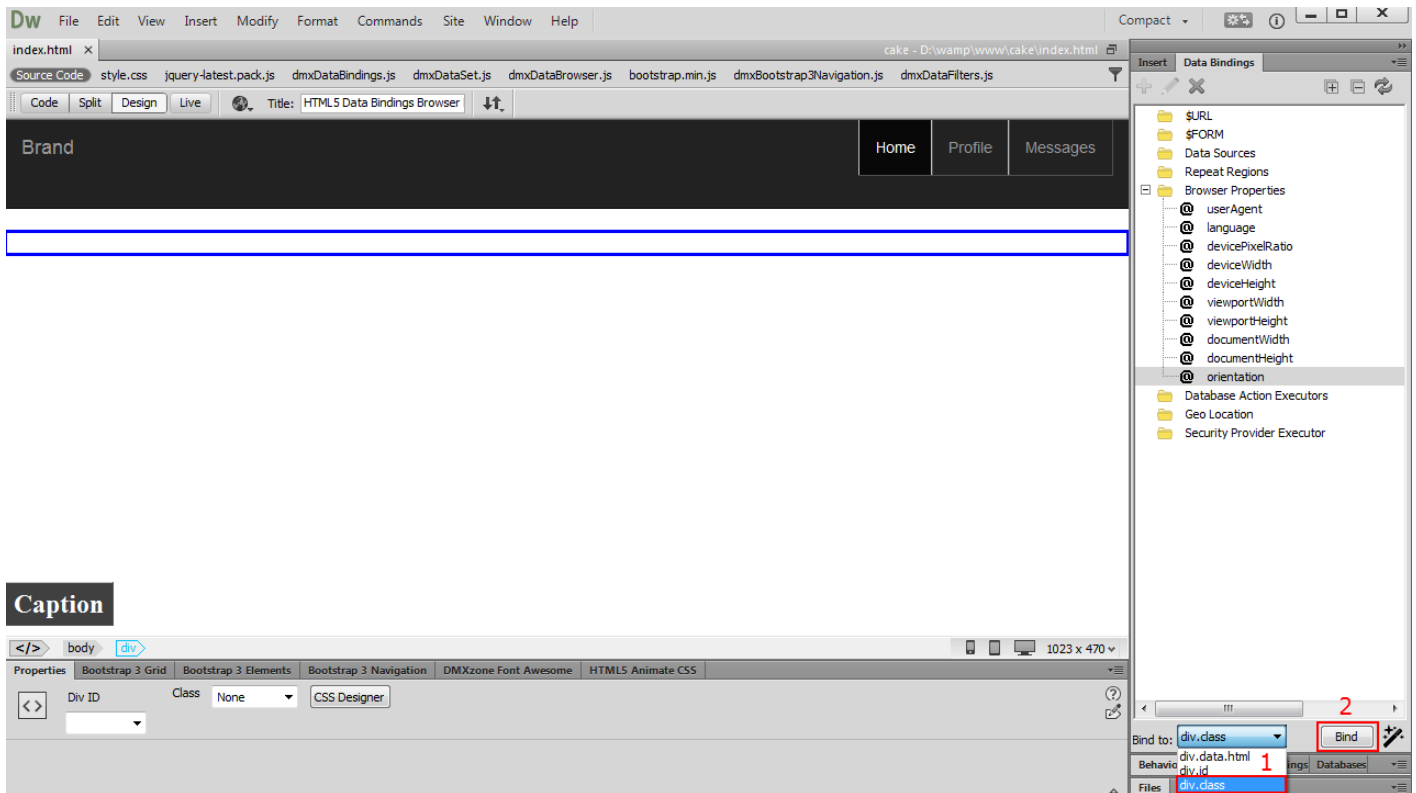
How to do it

1. We've created a really simple page layout. It includes a div container that should display a photo of a car. Select the **div container (1)** and **choose the orientation binding** that is located under Browser Properties **(2)**.

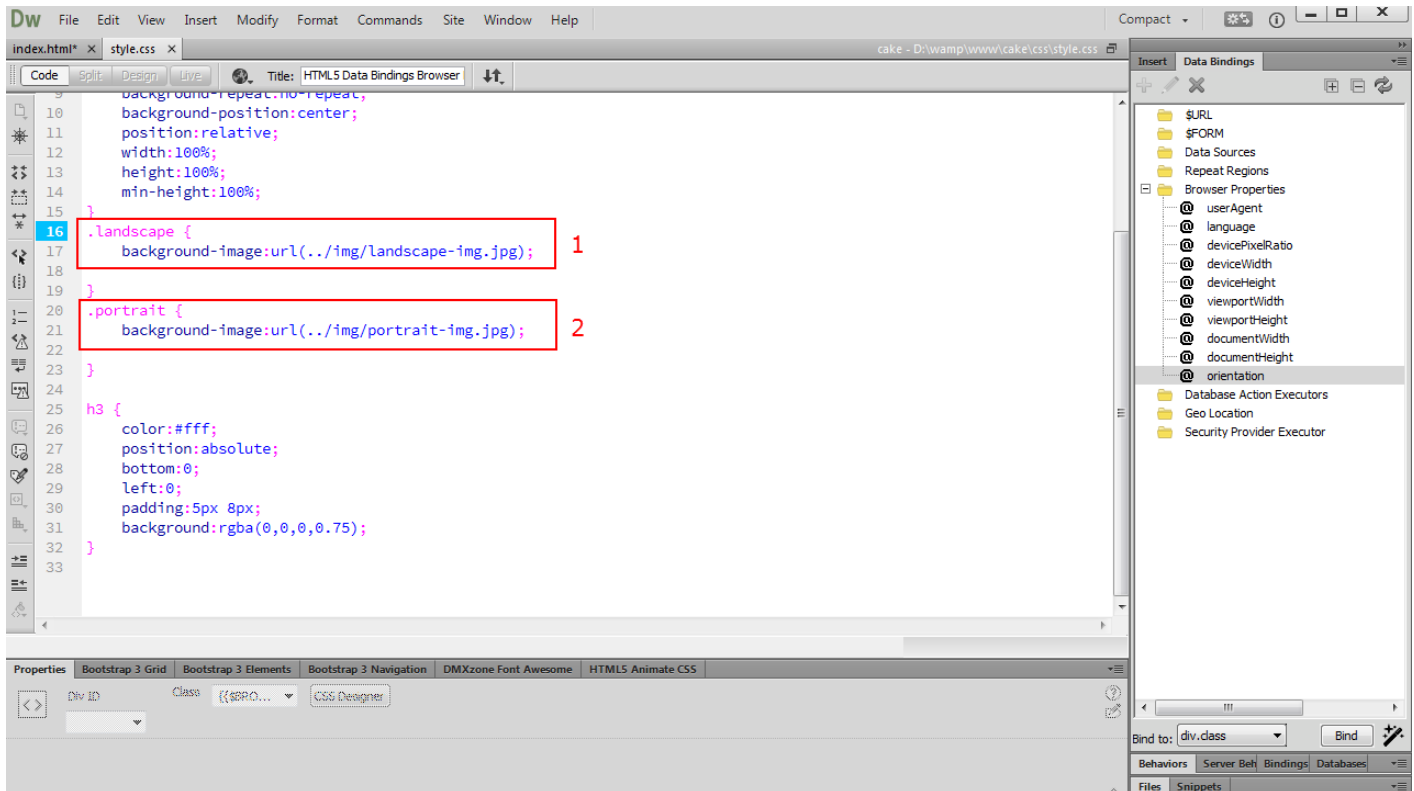


Caption

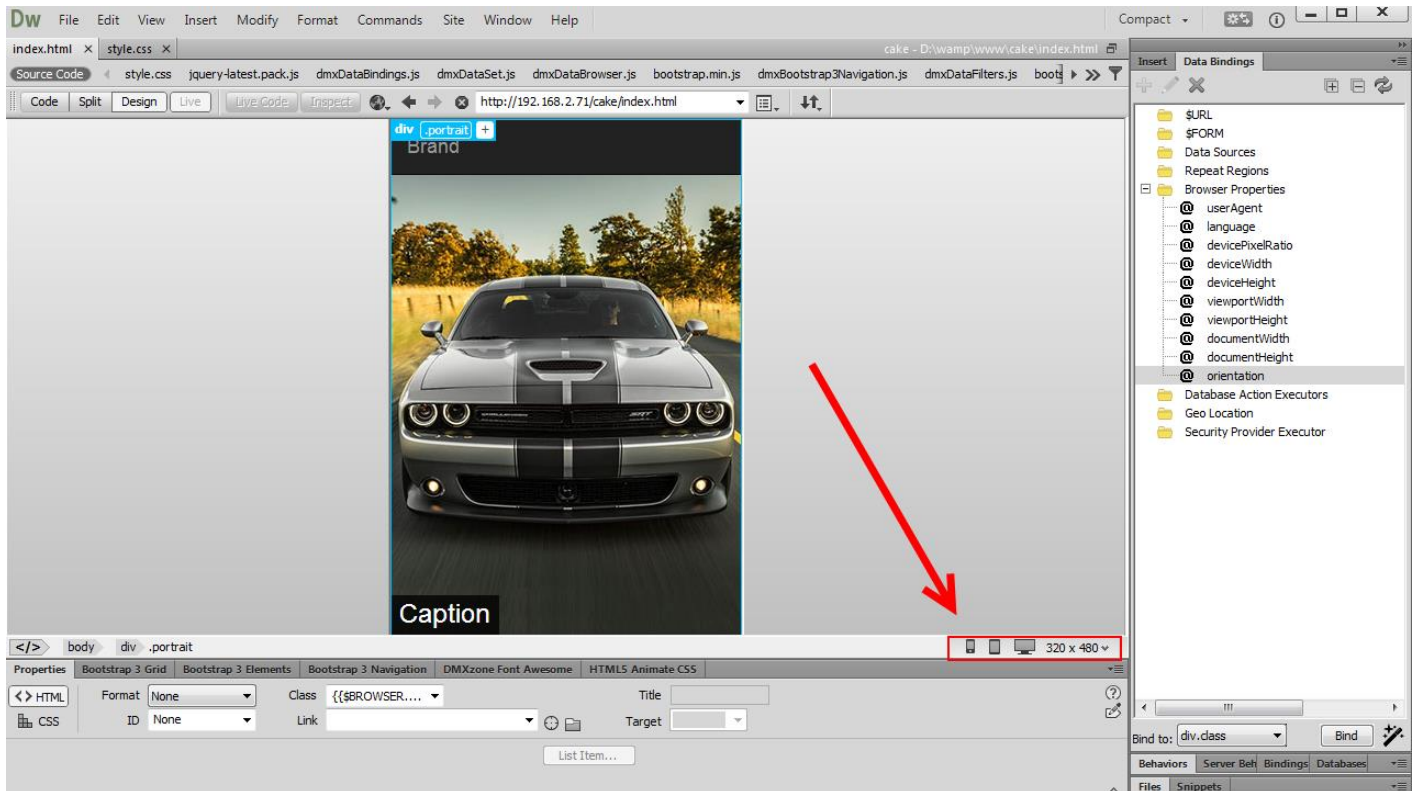
2. Open the “bind to” menu, select **div class (1)** and **bind the selected attribute (2)**.



- The orientation binding returns one of the following values: portrait or landscape. Depending on the orientation, portrait or landscape class will be applied to the div container. We've already added the portrait and landscape classes into our CSS file. The "**landscape**" class adds a background image, which is optimized for landscape page layout **(1)**. The "**portrait**" class adds a background image, which is optimized for portrait page layout **(2)**.



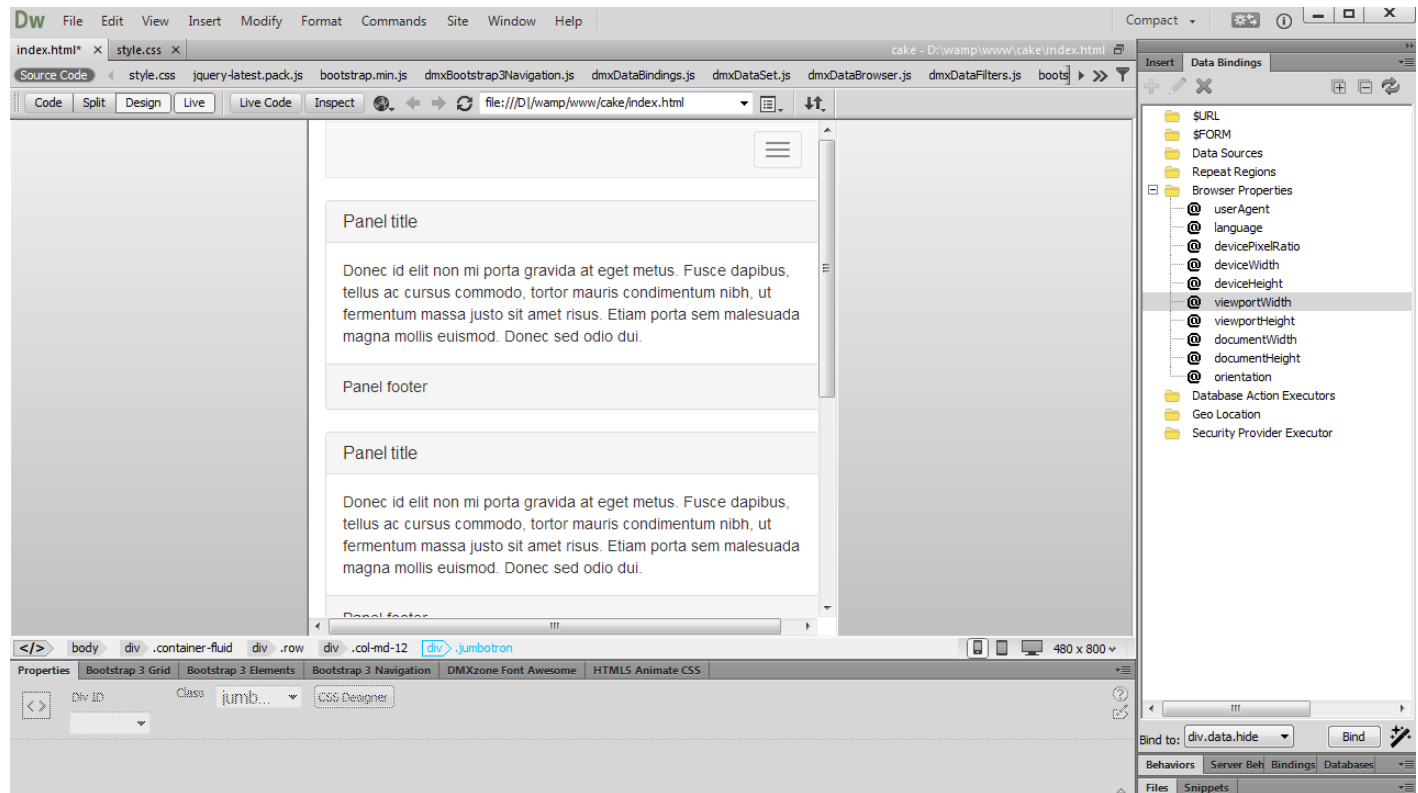
- Let's go back to our page, and preview the results. In Live view you can change between portrait and landscape views. This changes the div class name, and you can see the results.



Advanced: Show or Hide Specific Elements on Your Page

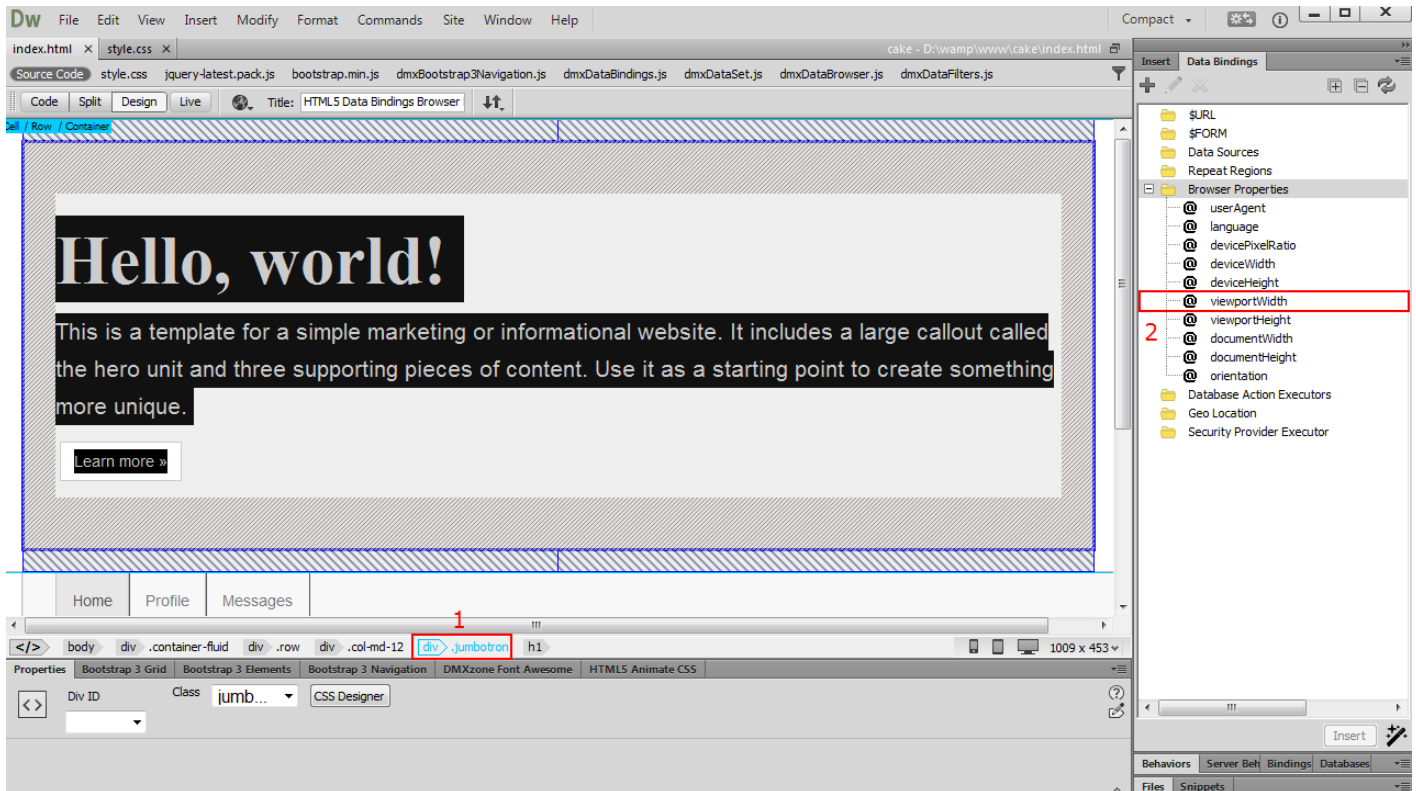
In this tutorial we will show you how to show or hide specific elements on your page, depending on visitor's browser viewport size.

*You can also check out the [video](#).

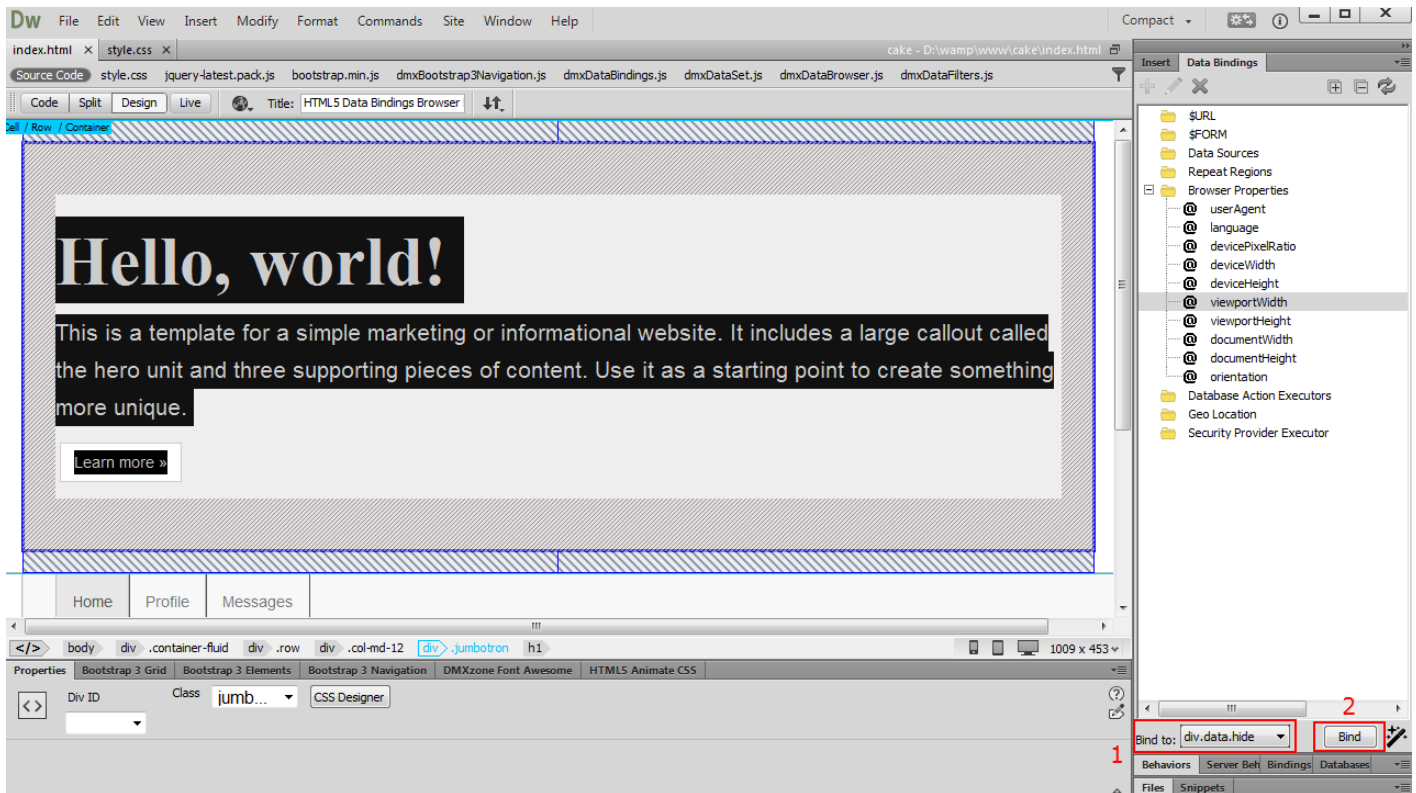


How to do it

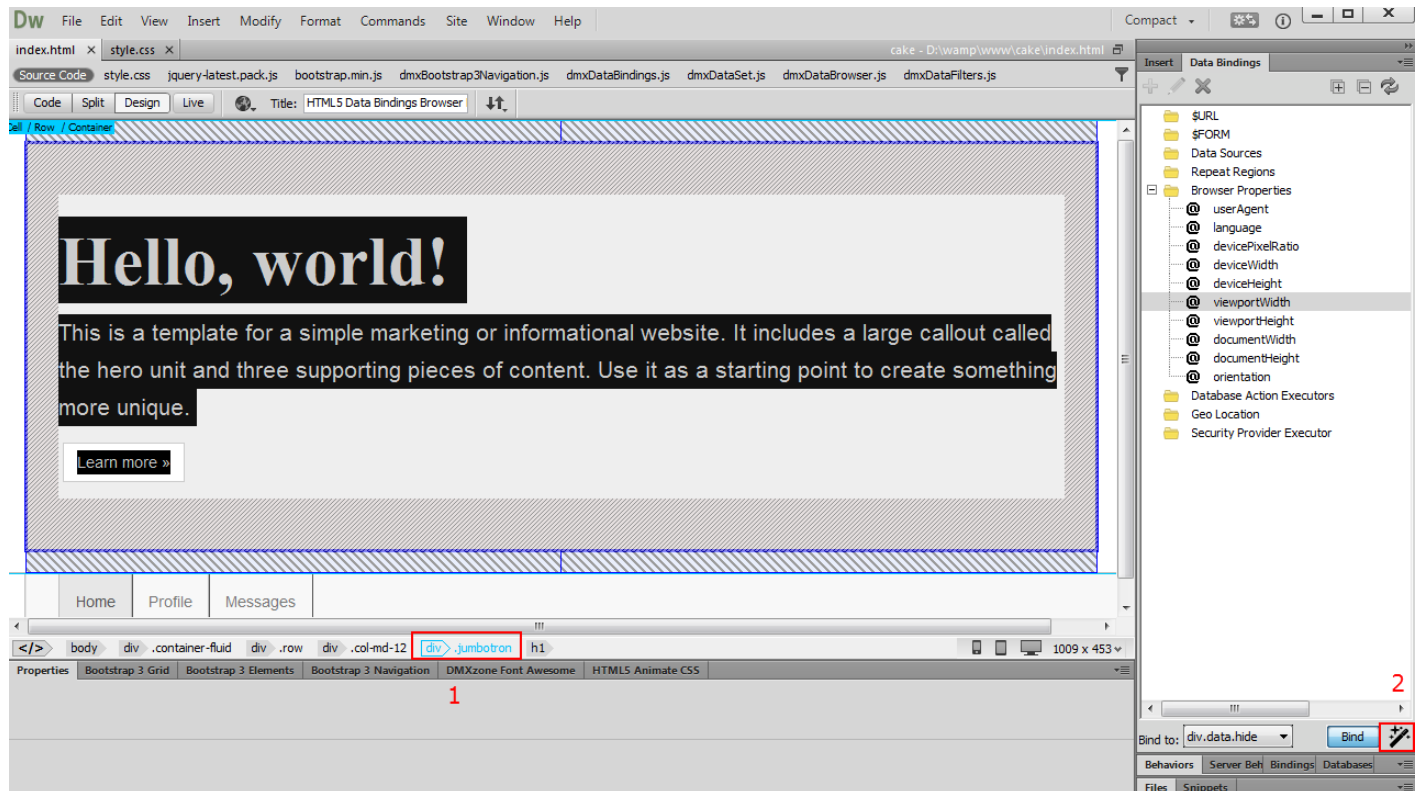
1. We've created a simple page layout. The page contains a big container with a welcome message. We would like to hide this container on smaller viewport sizes. We **select the container** in the properties inspector floating panel **(1)** and select **viewport width binding** under browser properties **(2)**.



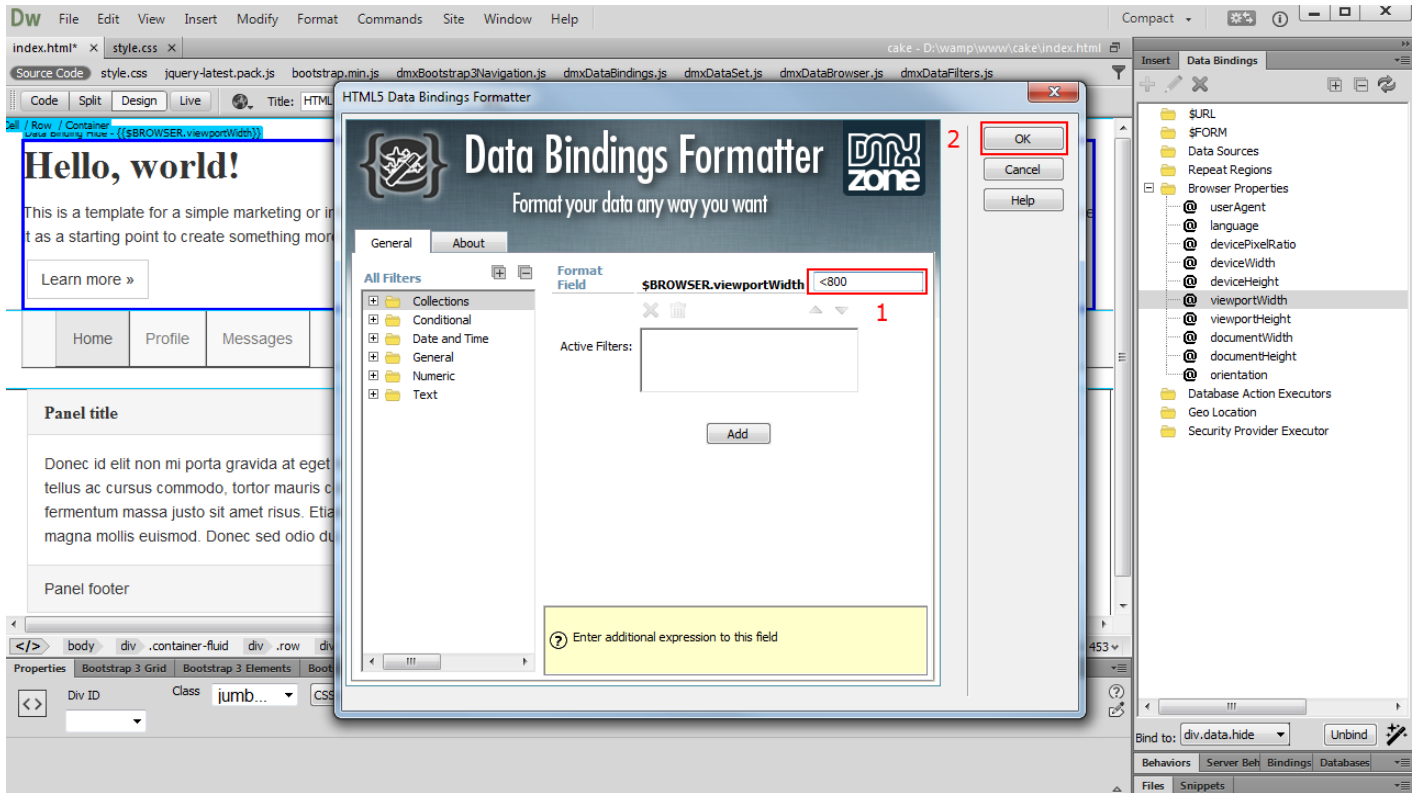
2. Open the “bind to” menu, select **data hide (1)** and **bind it (2)**.



3. While the **container is still selected (1)**, click the **Format Data Binding button (2)**. Note that you need to have [HTML5 Data Bindings Formatter](#) extension installed in Dreamweaver.

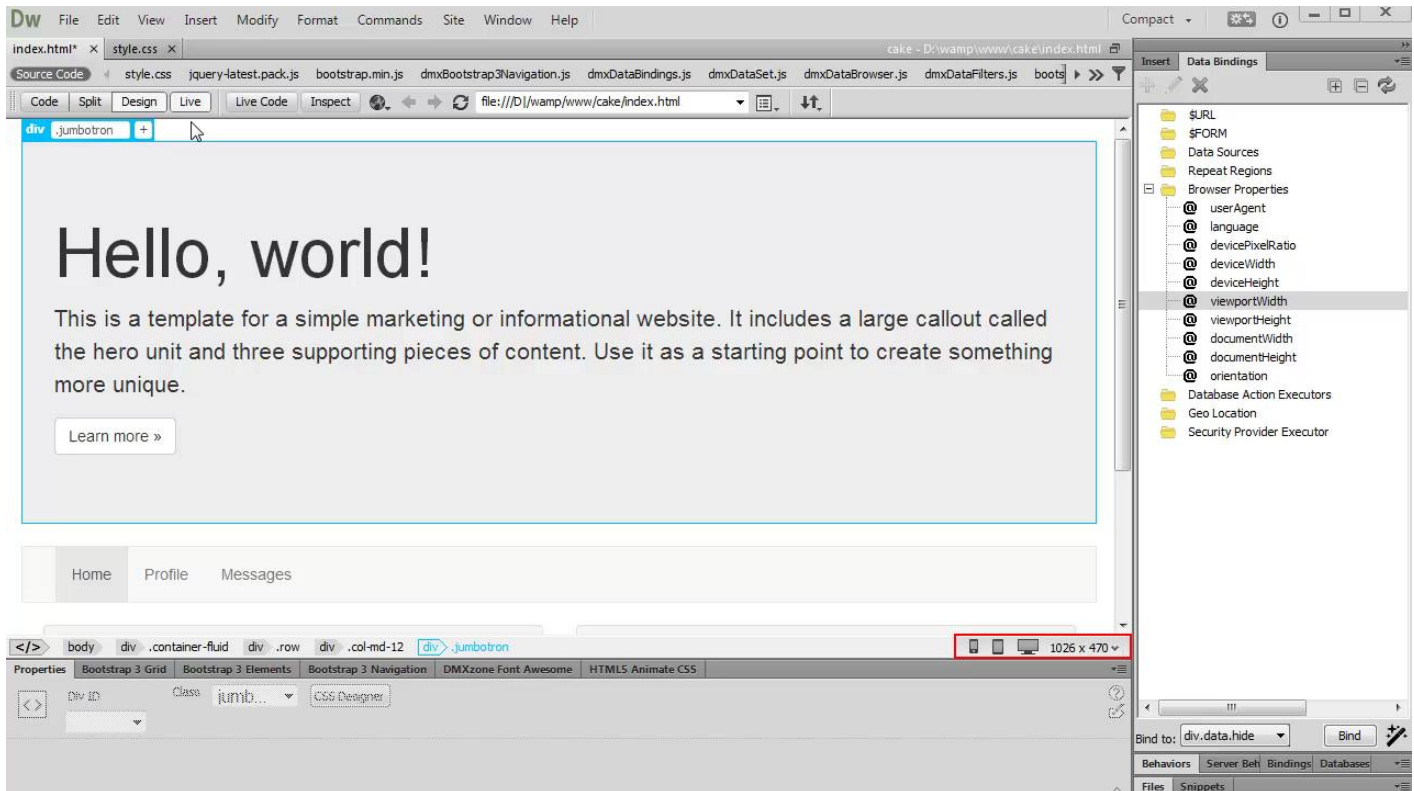


- Now we need to add a condition, when the container should be hidden. We don't want to show the container on viewport width smaller than 800 pixels. Enter **< 800** in the format field (1) and click the **OK button** in order to apply the condition (2).

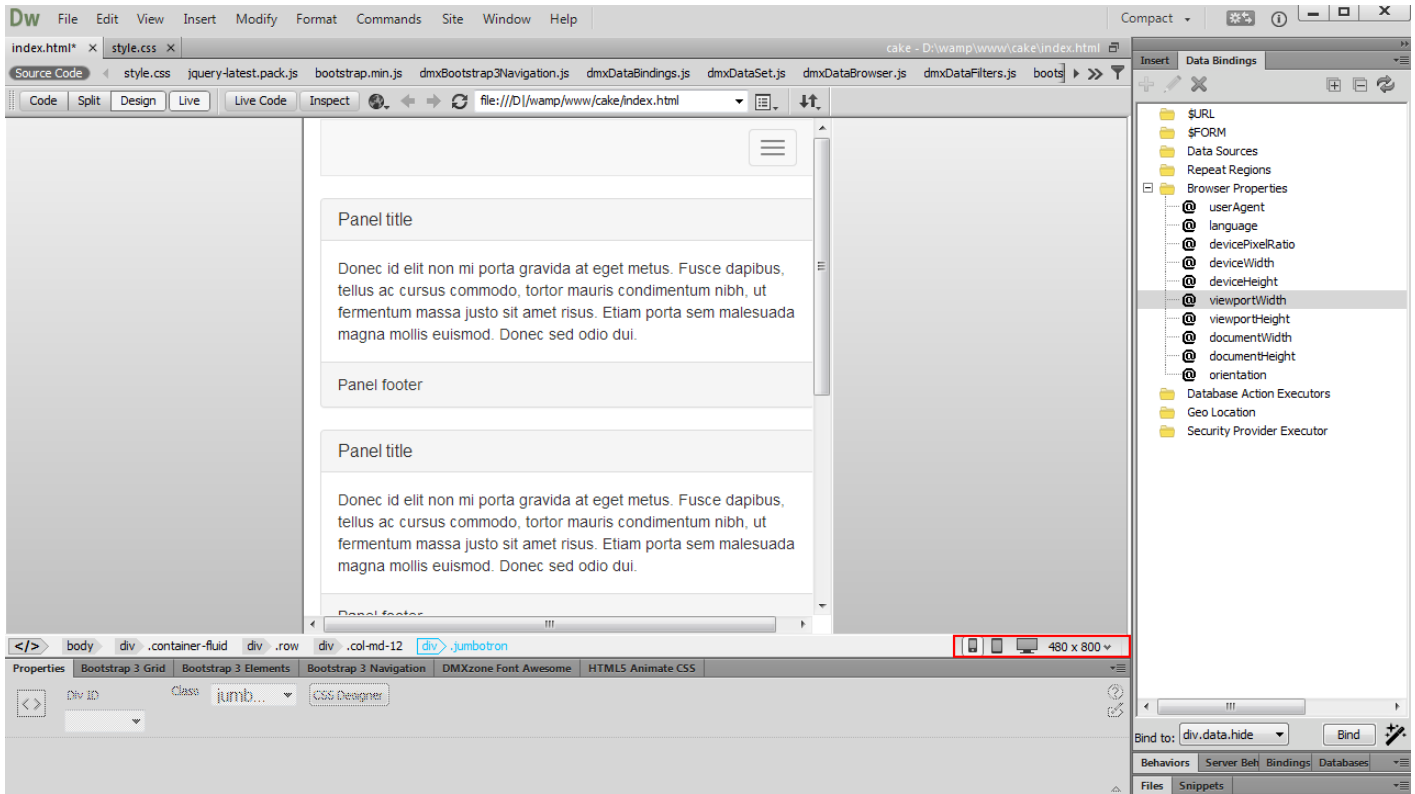


- Now we can preview the results. Change between different devices available in Dreamweaver Live View. You can see that the big welcome container is only visible on big viewport sizes, and on smaller ones it is hidden.

As seen on a screen larger than 800px



As seen on a screen smaller than 800px



Video: Access the Browser Properties Tracking on Your Page



With this [movie](#) will show you how to use [HTML5 Data Bindings Browser Properties](#) in order to access the browser properties tracking on your page.

Video: Serve Retina Optimized Images to Retina Devices



With this [movie](#) we will show you how to serve retina optimized images to retina devices, using [HTML5 Data Bindings Browser Properties](#).

Video: Change Content Depending on the Device Orientation



With this [movie](#) we will show you how to change your web site content, according to the visitor's device orientation.

Video: Show or Hide Specific Elements on Your Page



With this [movie](#) we will show you how to show or hide specific elements on your page, depending on visitor's browser viewport size.