

Table of contents

Table of contents	1
About DMXzone Lightbox 2.....	2
Features in Detail.....	3
The Basics: Insert a Lightbox Link on a Page.....	18
Advanced: Insert a Lightbox Thumbnail Link.....	24
Advanced: Insert a Lightbox Gallery on a Page	30
Advanced: Using DMXzone Lightbox 2 with Dynamic Data	36
Video: Insert a Lightbox Link on a Page	42
Video: Insert a Lightbox Thumbnail Link.....	42
Video: Insert a Lightbox Gallery on a Page.....	42
Video: Using DMXzone Lightbox 2 with Dynamic Data.....	42

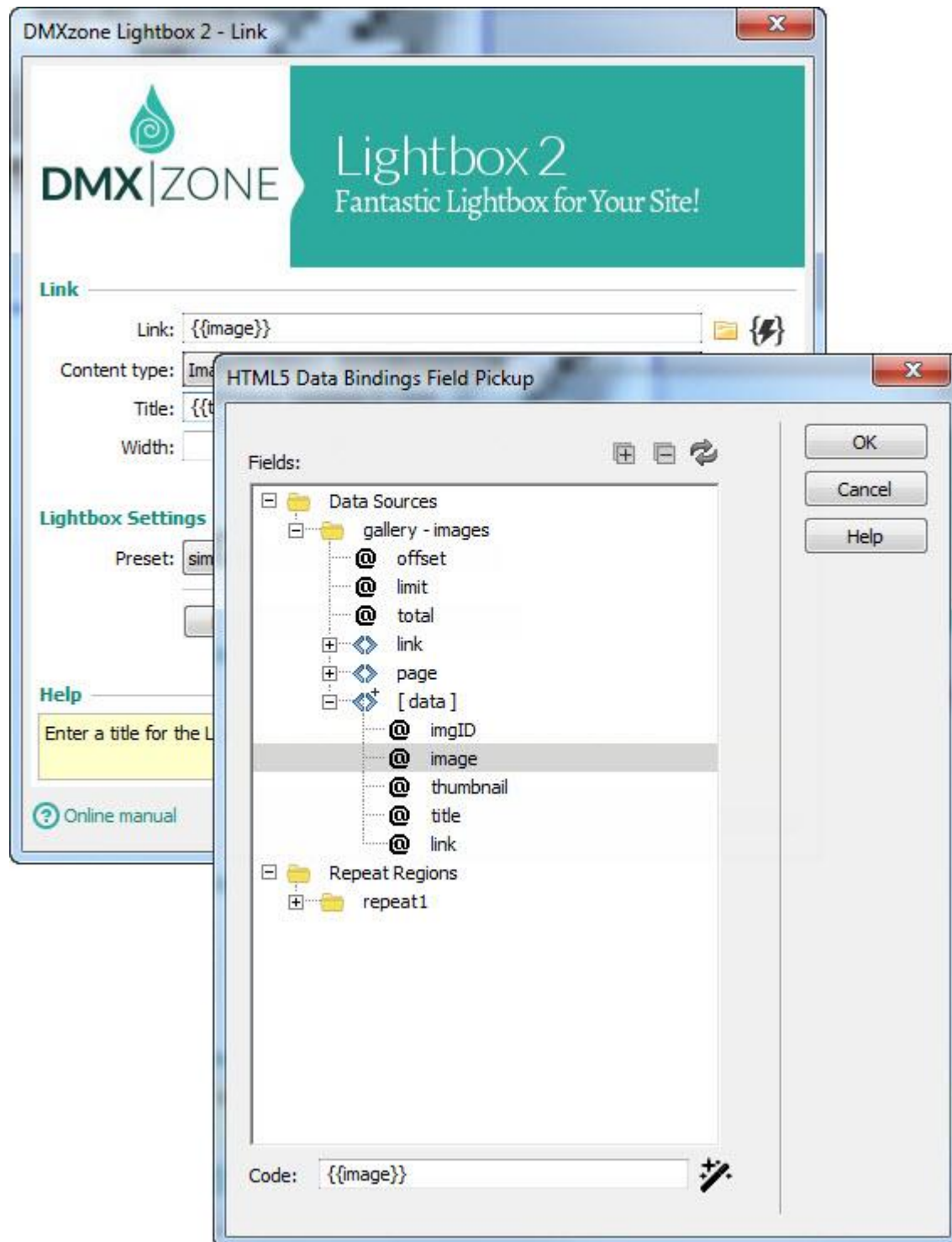
About DMXzone Lightbox 2

DMXzone Lightbox 2 is the right tool to use when you want to open your photos in a modal stylish popup. The extension is supplied amazing Lightbox popup presets that catch the eye and amaze the user with its slick designs. All design presets are fully customizable and allow you to explore your creativity and fit the Lightbox perfectly into your site design. With a single click you can add Lightbox functionality to any existing element like images, links or forms! With the built-in DMXzone Resizer the Lightbox will directly resize your images, create thumbnails and even combine images in galleries, while getting a live preview of the Lightbox within Dreamweaver.

With full mobile support, DMXzone Lightbox 2 looks amazing not only on desktop browsers but also on mobile devices. You can even supply the images for your galleries from a data source thanks to the awesome HTML5 Data Bindings integration.

Features in Detail

- **Great integration with HTML5 Data Bindings** - HTML5 Data Bindings Repeat Regions will reinitialize all DMXzone Lightbox links in them automatically on redraw.
- **Dynamic Lightbox galleries** - Create a repeat region with [HTML5 Data Bindings](#) and supply the images for a dynamic Lightbox gallery by clicking on the dynamic data pickers.

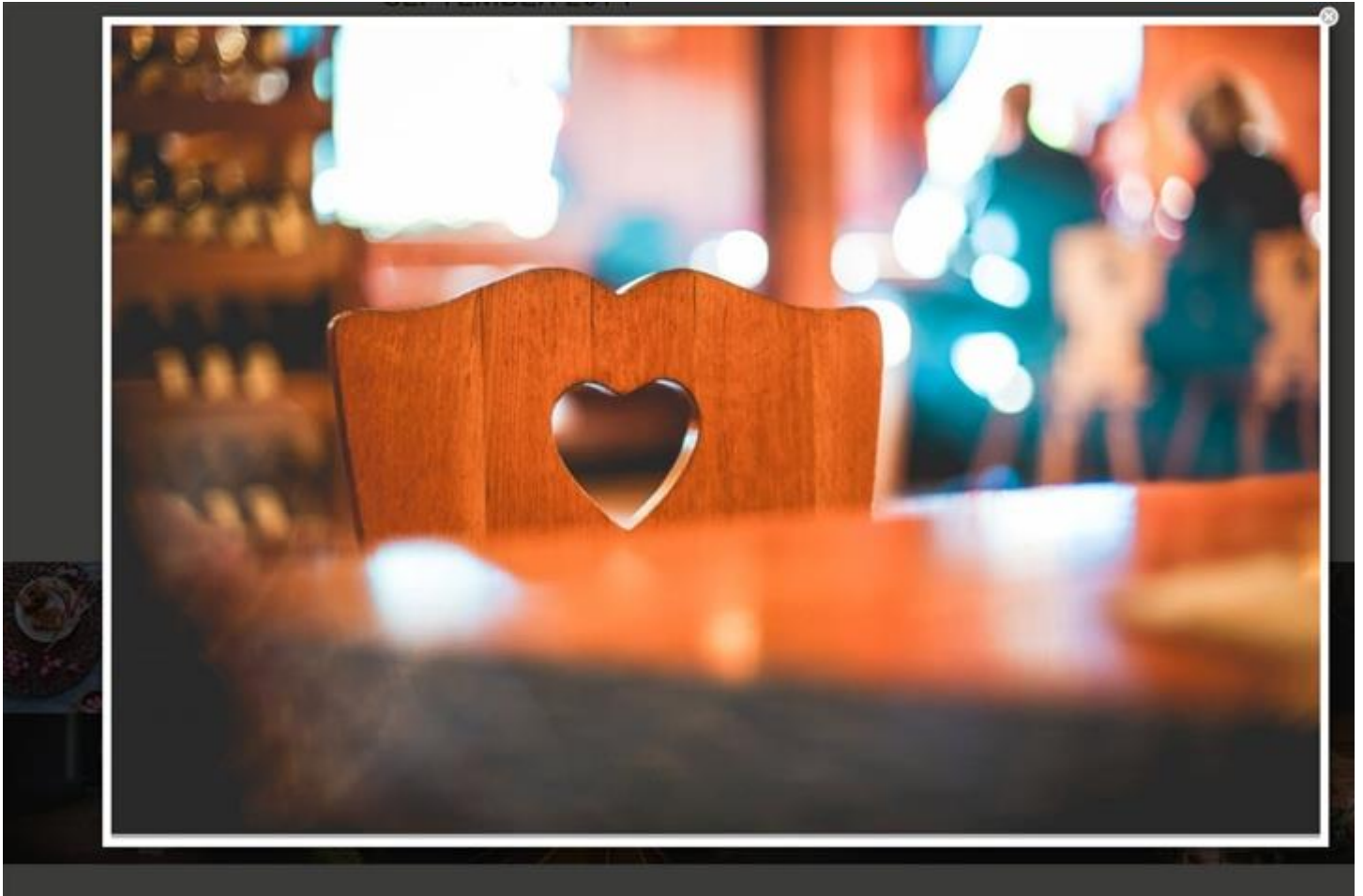


- **64bit Dreamweaver support** - DMXzone Lightbox 2 runs smoothly even on the latest 64bit update of Dreamweaver CC 2014.

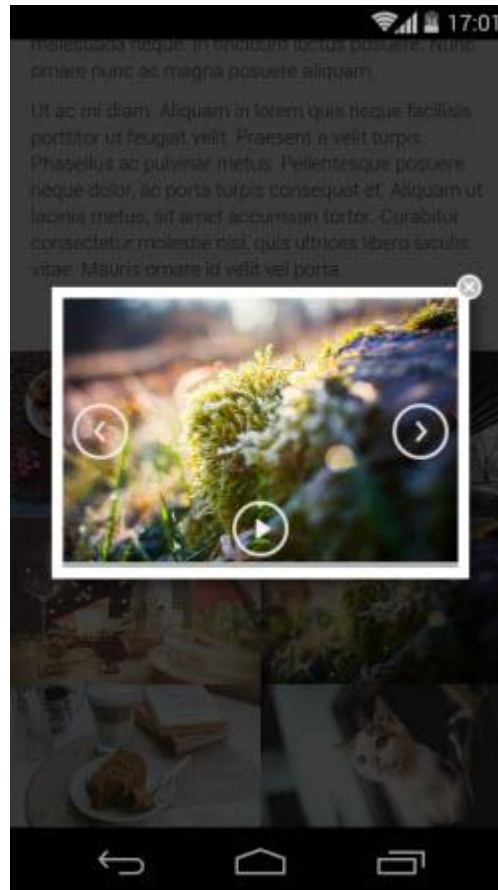


- **Create image galleries** - DMXzone Lightbox 2 allows you to combine images in galleries that open in a Lightbox dialog.





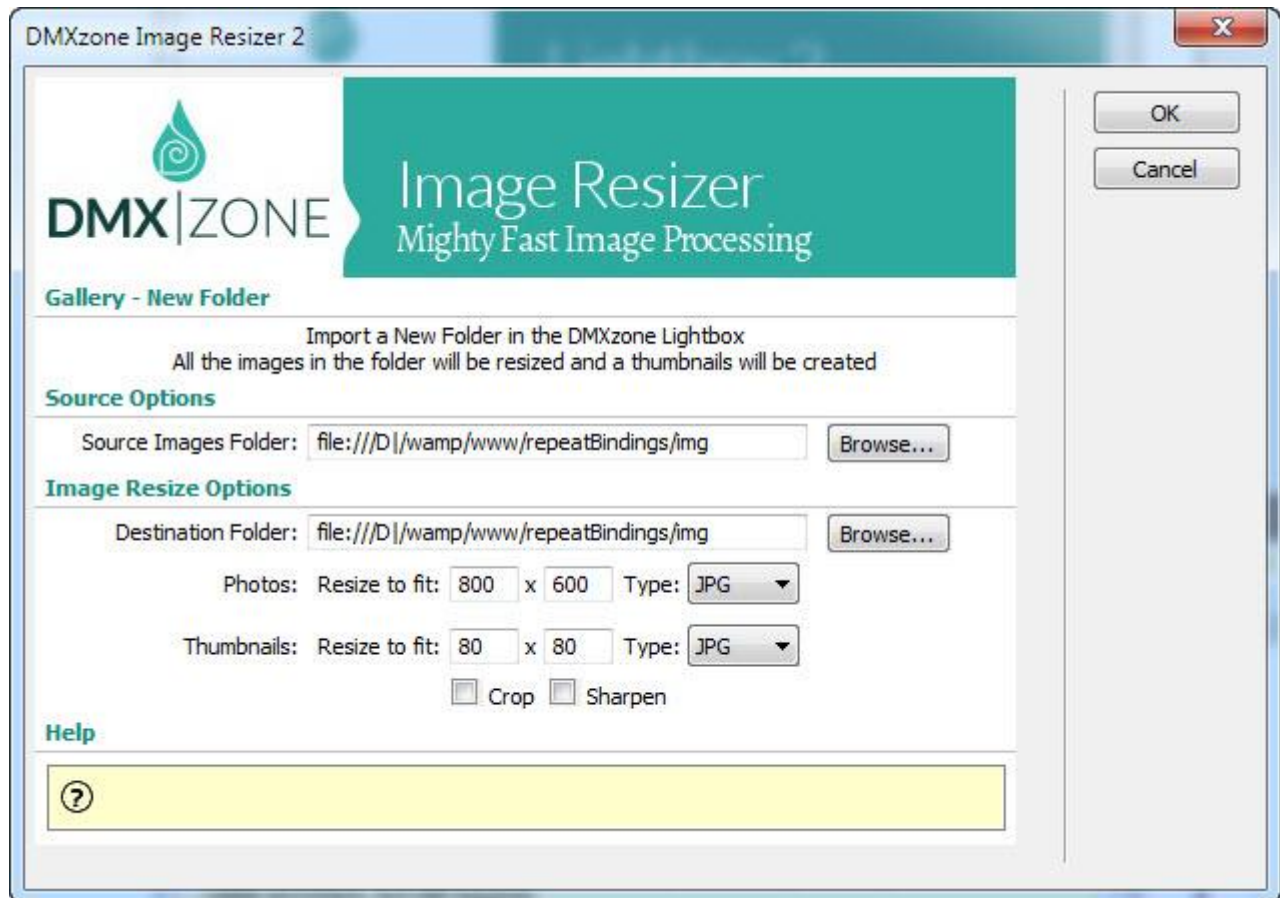
- **Full mobile support** - Due to its responsiveness DMXzone Lightbox 2 looks amazing not only on desktop browsers but also on mobile devices.



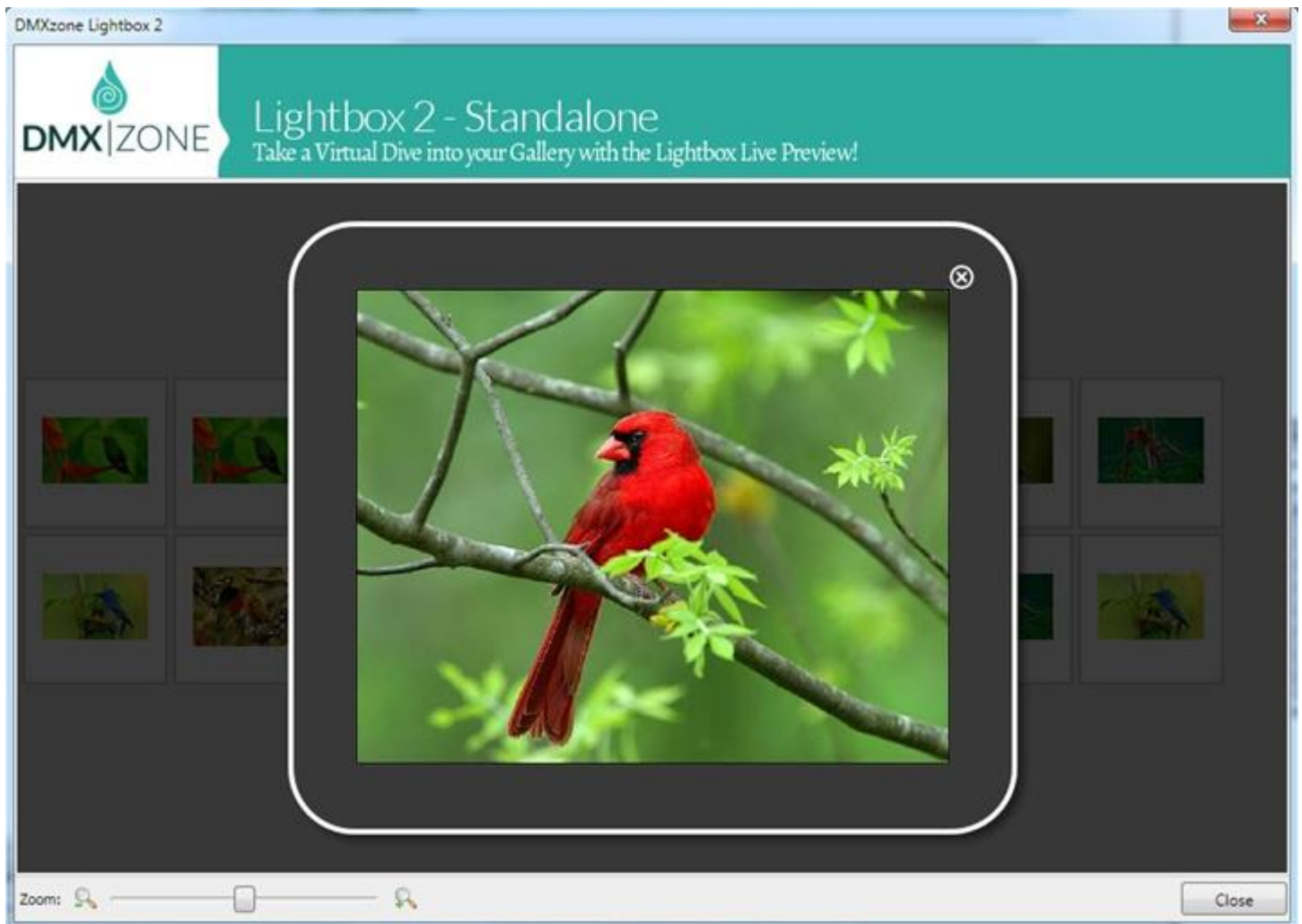
- **Full video support** - Give your pages additional interactivity and open your videos from YouTube or local ones directly within DMXzone Lightbox 2.



- **Image resizer and thumbnail generator** - The extension has a built-in super-fast, multithreaded image processor in Dreamweaver that will resize your images and make thumbnails in an eye blink. Original images can be automatically resized to fit the specified size while the proportions are maintained. Now available also in 64bit for the fastest performance!



- **Live preview** - Interactive live preview of the Lightbox options and designs within Dreamweaver!



- **Thumbnail links** - Add Lightbox link to a single image thumbnail to save space on your page but still offer your users large preview of the image.



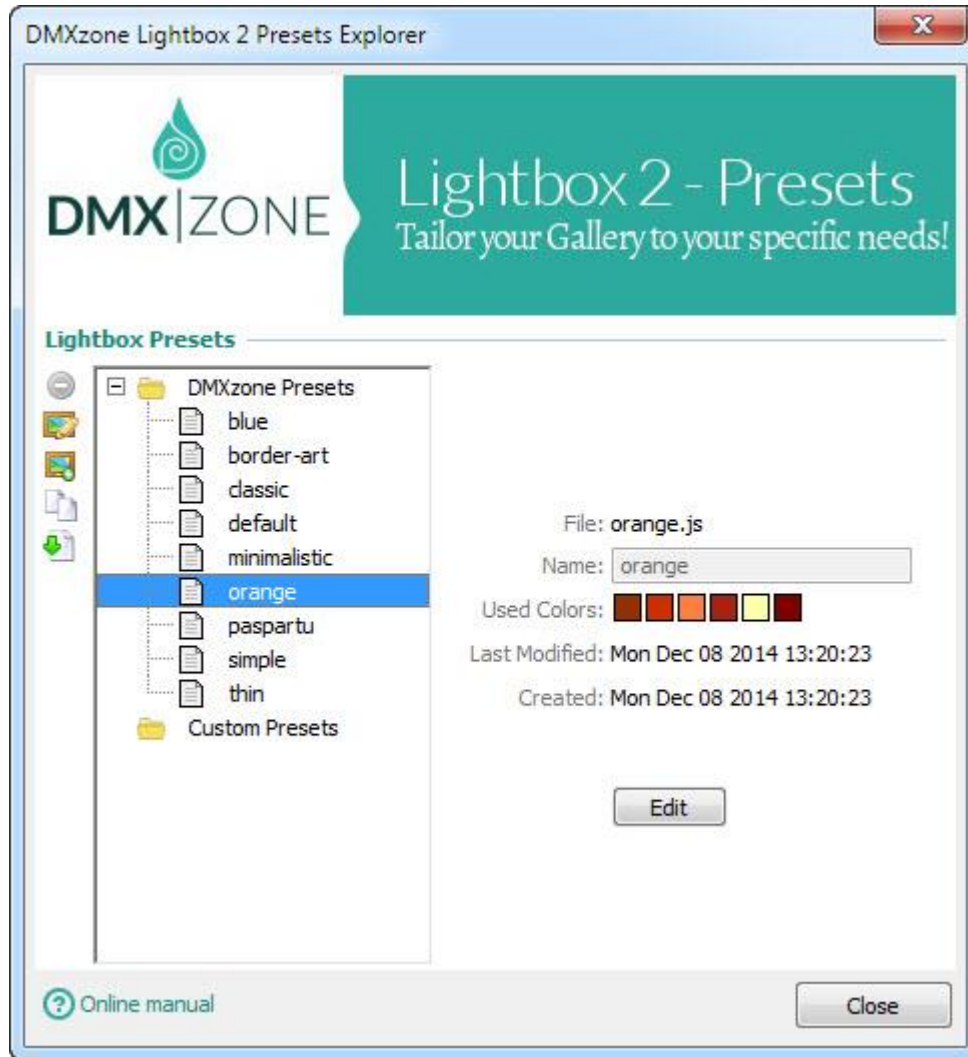
- **Regular links** - Open regular, existing links in the Lightbox dialog.

The screenshot shows a dialog box titled "DMXzone Lightbox 2 - Link". The dialog has a header area with the DMXzone logo and the text "Lightbox 2 Fantastic Lightbox for Your Site!". Below the header, there are several sections:

- Link**: A section with a "Link:" text box containing "#", a "Content type:" dropdown menu set to "Auto detect", a "Title:" text box, and "Width:", "Height:", and "Group:" text boxes.
- Lightbox Settings**: A section with a "Preset:" dropdown menu set to "default" and an "Edit" button. Below this are two buttons: "Live Lightbox" and "Manage Presets".
- Help**: A section with a yellow highlighted box containing the text "Select a configuration preset to be used for this item."

At the bottom of the dialog, there is an "Online manual" link with a question mark icon, and "OK" and "Cancel" buttons.

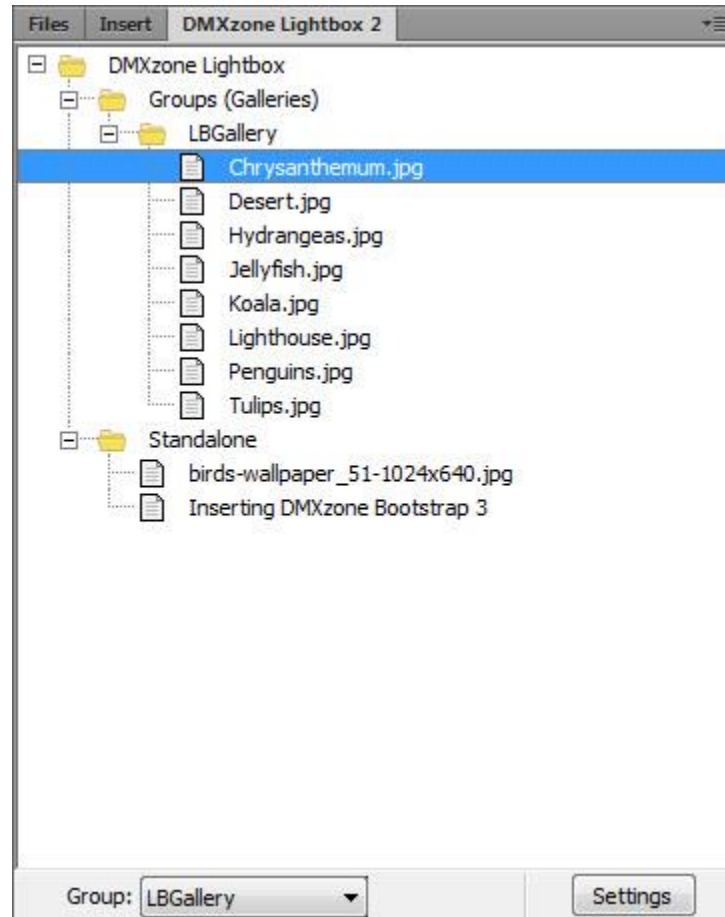
- **Design presets** - DMXzone Lightbox 2 is supplied with fully customizable design presets, all drawn in real time with canvas.



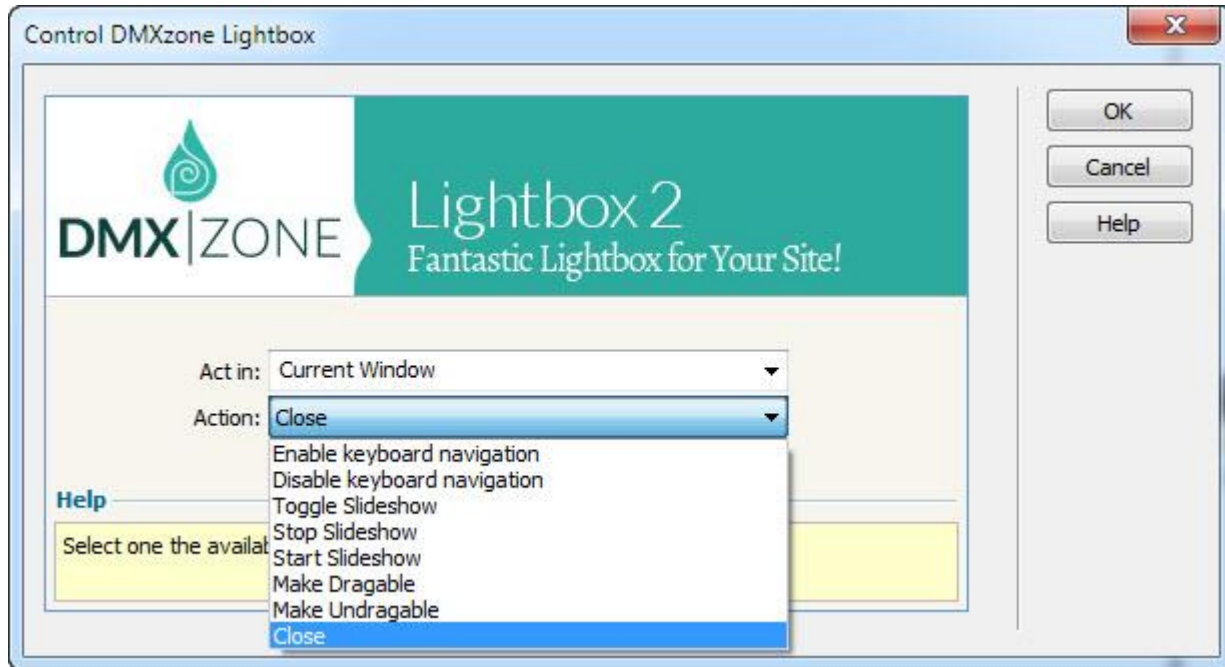
- **Custom presets** - Edit the existing design presets directly from the DMXzone Lightbox Configuration window in order the Lightbox to fit your website design perfectly.



- **Build-in floater in Dreamweaver** - All Lightbox elements are inspected by its own Floater, so you don't lose the ability to edit your images and links in Dreamweaver but rather you get additional options.



- **Fully controllable by behaviors** - You can choose between many great actions such as close, enable/disable keyboard navigation, make draggable/undraggable, start/stop slideshow and more.



- **Full cross-browser support** - Get the best performance in the latest browsers and degrade gracefully without any disturbance in the older versions.

Before you begin

Make sure to setup your site in Dreamweaver first before creating a page. If you don't know how to do that please [read this](#).

Installing the extension

Get the latest DMXzone Extension Manager at
<http://www.dmxzone.com/go/22670/dmxzone-extension-manager-for-dreamweaver>

Open DMXzone Extension Manager and go to your Purchased products tab and click install. If you have a subscription, the extension is to be found and installed in the Explore tab.

Or get the latest extension manager from Adobe at
http://www.adobe.com/exchange/em_download/

Open the .zxp file if you're using Dreamweaver CC or the .mxd file for Dreamweaver CS+ with Adobe Extension manager and install the extension.



If you experience any problems contact our Live Support!

The Basics: Insert a Lightbox Link on a Page

In this tutorial we will show you how to insert a Lightbox link on your page using [DMXzone Lightbox 2](#).
*You can also check out the [video](#).

Fashion Store Shop About Lookbook

HOME / HANDBAGS / SHOULDER BAG



SHOULDER BAG

LOREM IPSUM
Lorem ipsum dolor sit amet, consectetur adipiscing elit. Suspendisse dictum at eros ac ultricies. Duis odio nisi, dictum vel sodales ac, accumsan id ante. Sed sit amet, nulla turpis. Proin lobortis sapien velit, ut tempus turpis ullamcorper ut. Mauris suscipit nibh est, eget molestuada lacus aliquam id.




Dimensions: 9" X 7.5" X 5".

SIZE GUIDE

\$142.99

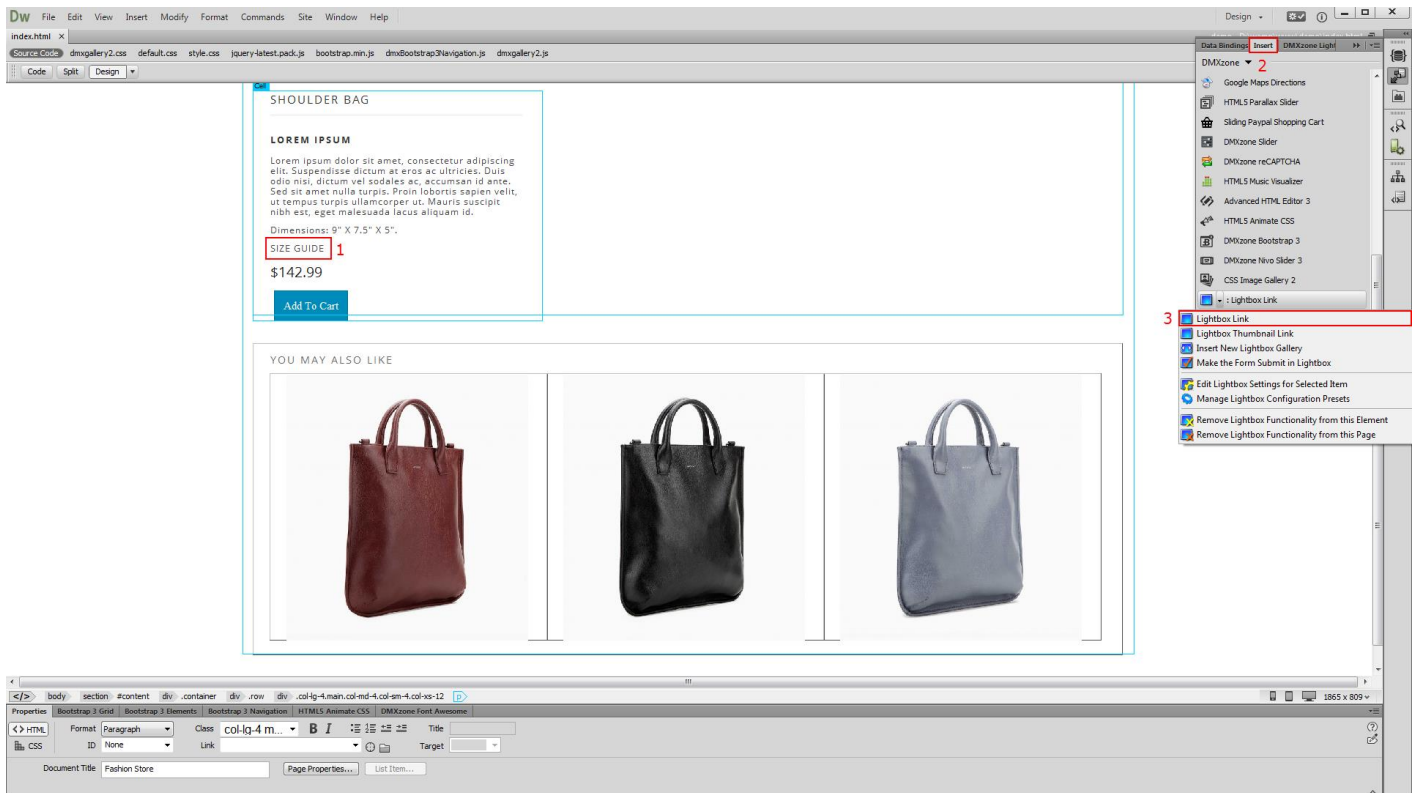
[Add To Cart](#)

YOU MAY ALSO LIKE

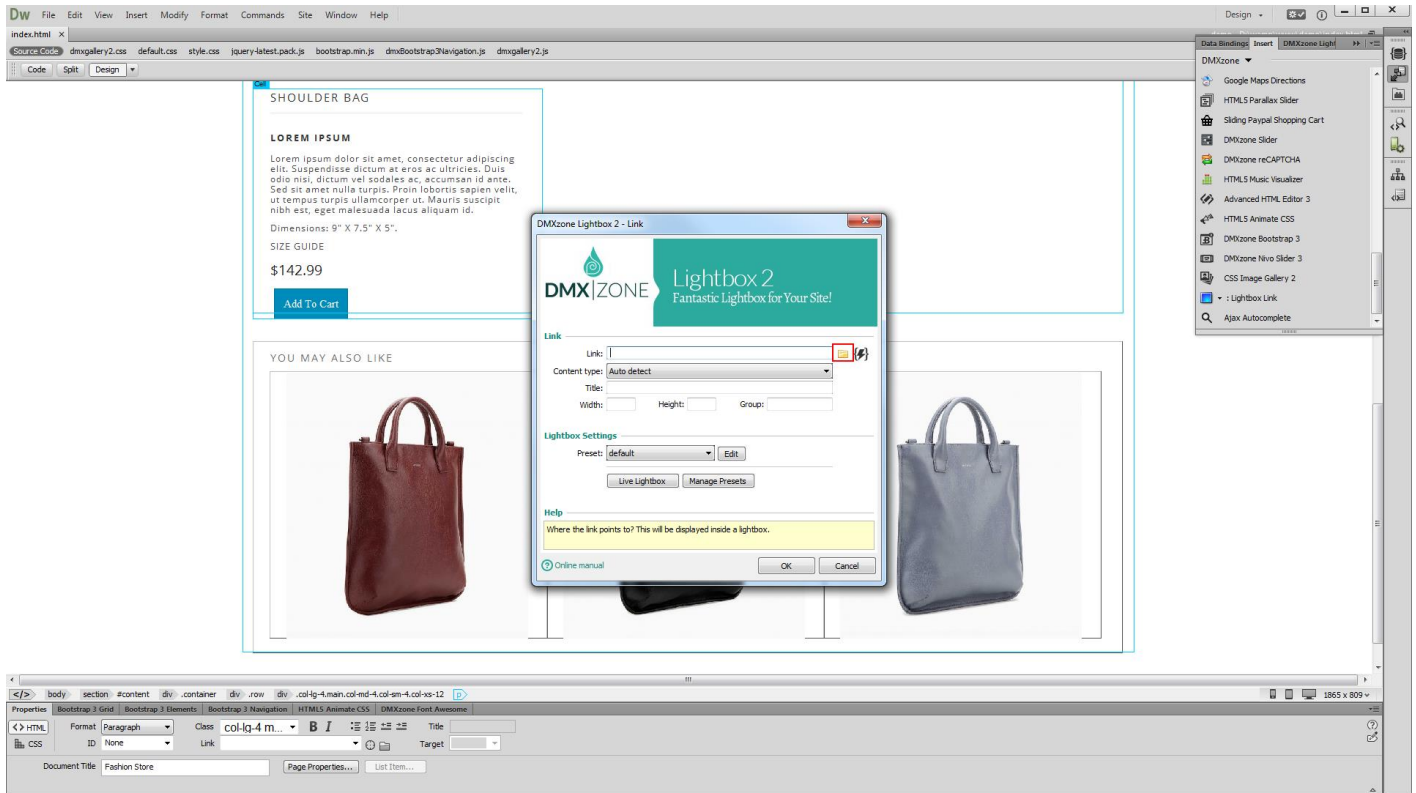


How to do it

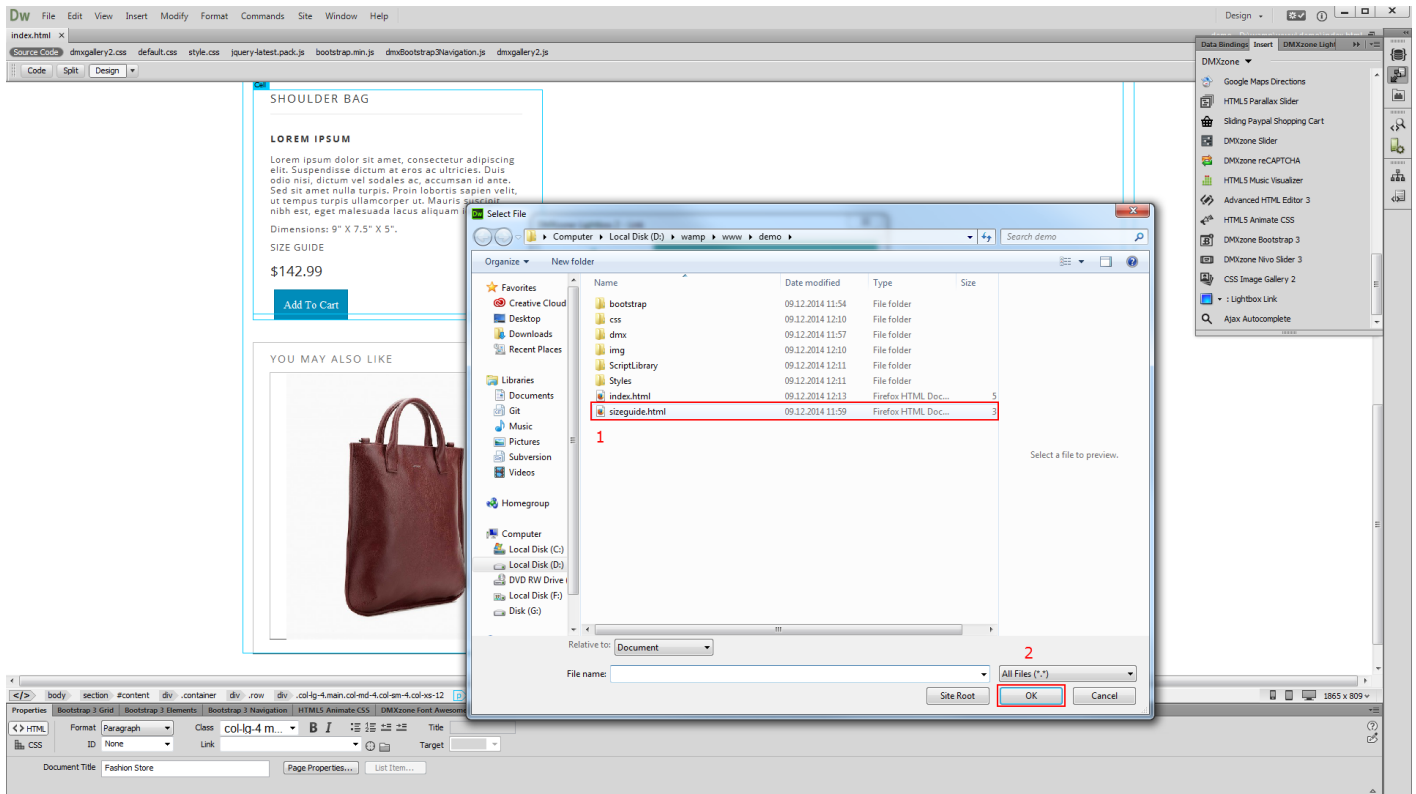
1. We created our page layout and we want to add a size guide for our products, which we want to show within a Lightbox popup. Select the **part of the content** that you want to attach the Lightbox link to **(1)** and from the **insert panel (2)** select **Lightbox link (3)**.



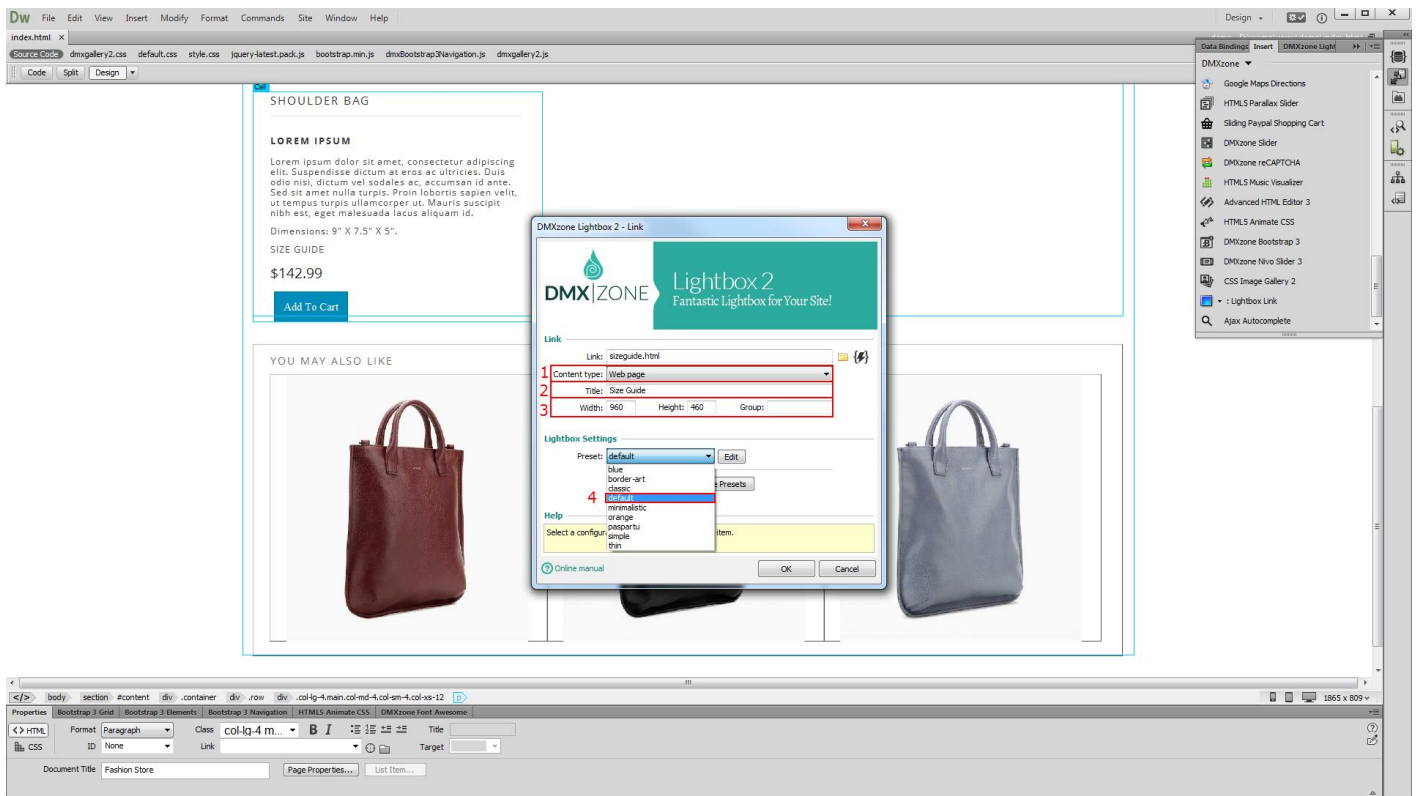
2. First, we need to add a link to the file that we want to show inside the Lightbox window. Click the **browse** button.



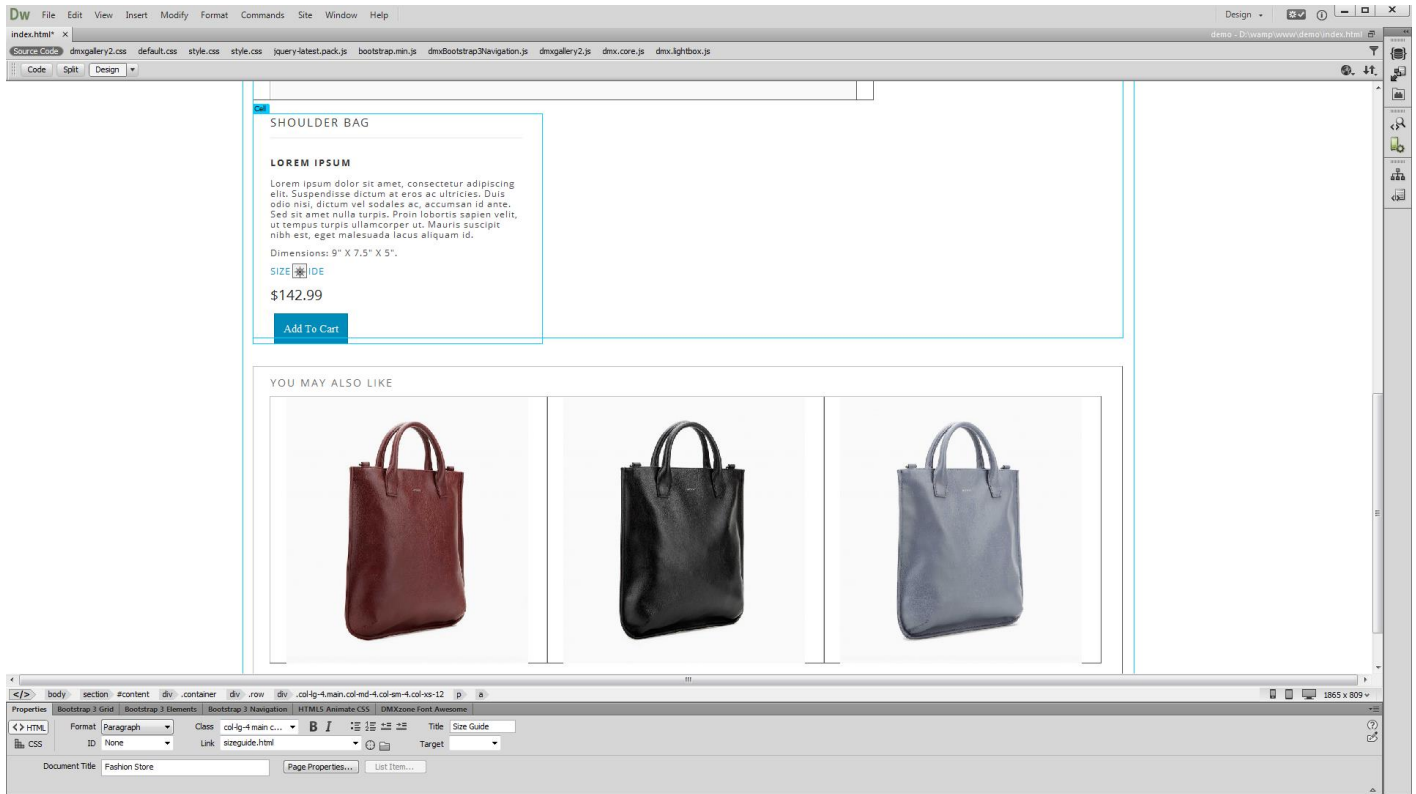
3. Select the **file (1)** and **click OK (2)**.



4. Select the content type or leave it to auto detect. We included an HTML file so we select the **web page option (1)**. You can also add a title for the **Lightbox window (2)**, **width and height** (leave empty for autosize) **(2)** and choose one of the predefined **presets (3)**. When you're done, click OK.



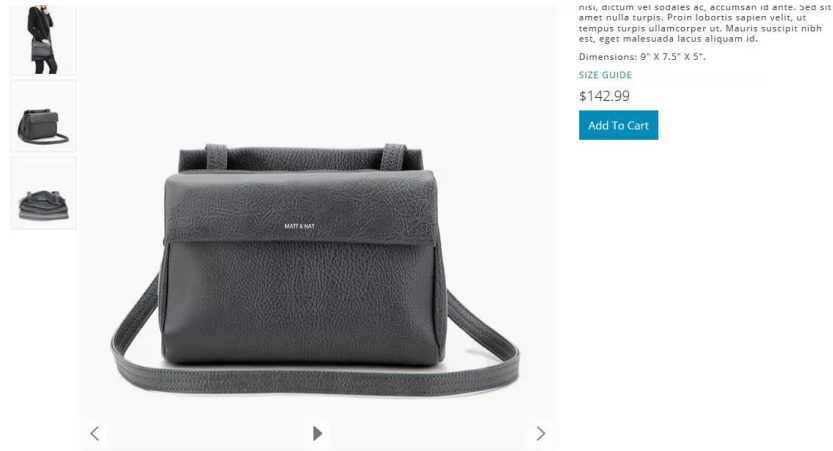
5. Now you can save your page and preview the results.



Advanced: Insert a Lightbox Thumbnail Link

In this tutorial we will show you how to insert a Lightbox thumbnail link on your page, using [DMXzone Lightbox 2](#).

*You can also check out the [video](#).



The image shows a product lightbox for a grey bag. On the left, there are three small thumbnail images: a person wearing the bag, the bag from a side angle, and the bag from a top-down perspective. The main image is a front view of the bag, which has a textured surface and a strap. To the right of the main image, there is a text block containing placeholder text: "nisi, dictum vel sodales ac, accumsan id ante. Sed sit amet nulla turpis. Proin lobortis sapien velit, ut tempus turpis ullamcorper ut. Mauris suscipit nibh est, eget malesuada lacus aliquam id." Below this is "Dimensions: 9" X 7.5" X 5"., "SIZE GUIDE", and the price "\$142.99". At the bottom right of the text block is a blue "Add To Cart" button. Navigation arrows are visible at the bottom of the main image.

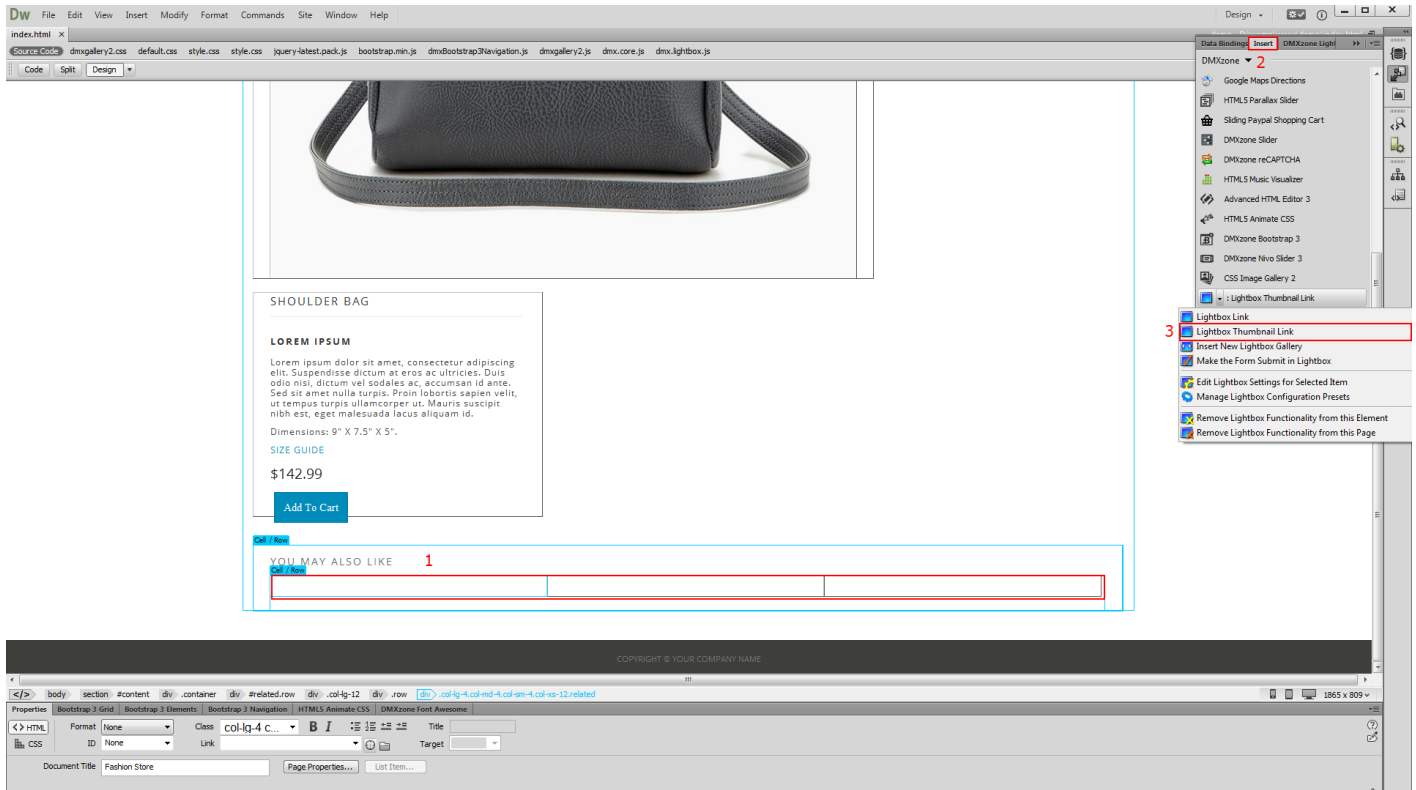
YOU MAY ALSO LIKE



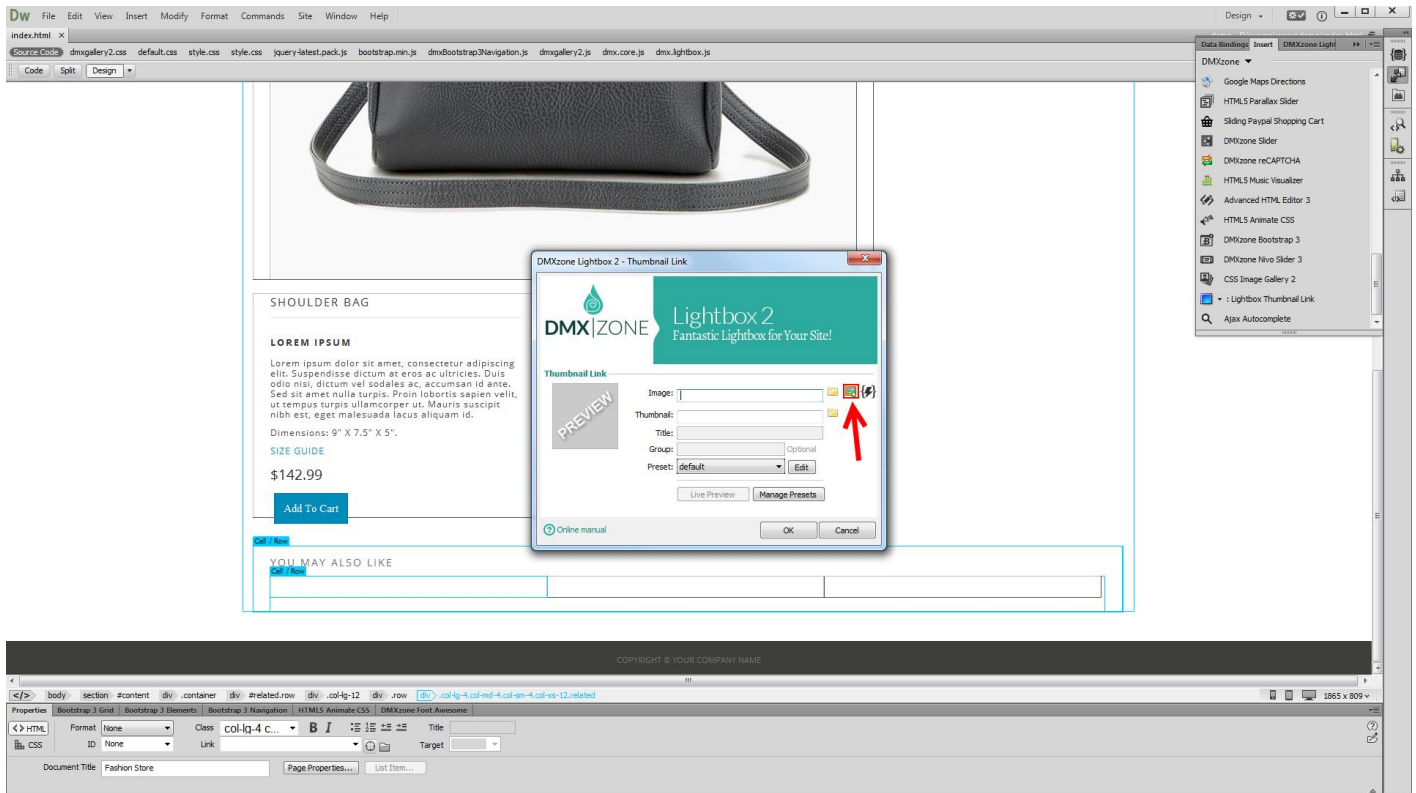
COPYRIGHT © YOUR COMPANY NAME

How to do it

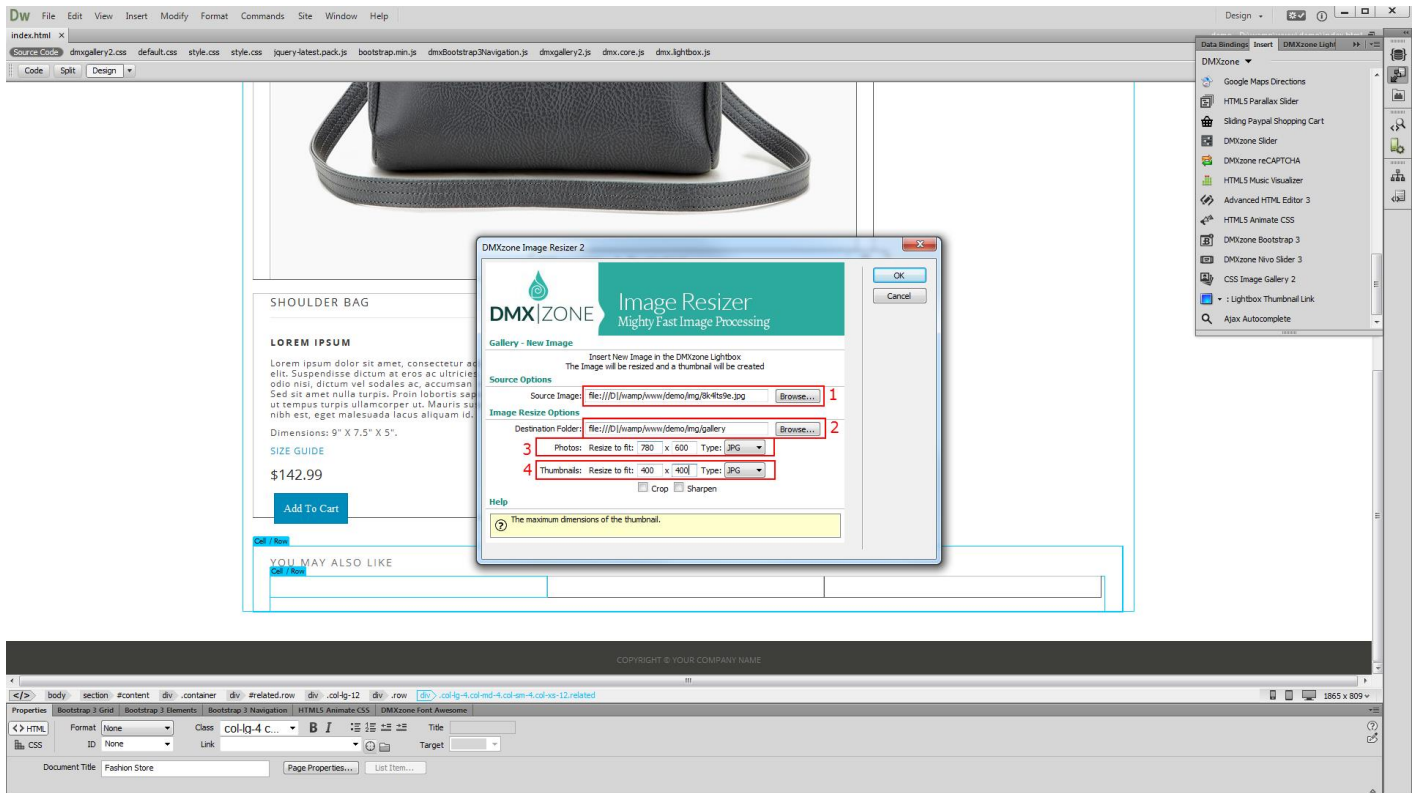
1. We already created our page layout. Now, click where you want to insert the **thumbnail (1)** and from **insert (2)** choose **lightbox thumbnail link (3)**.



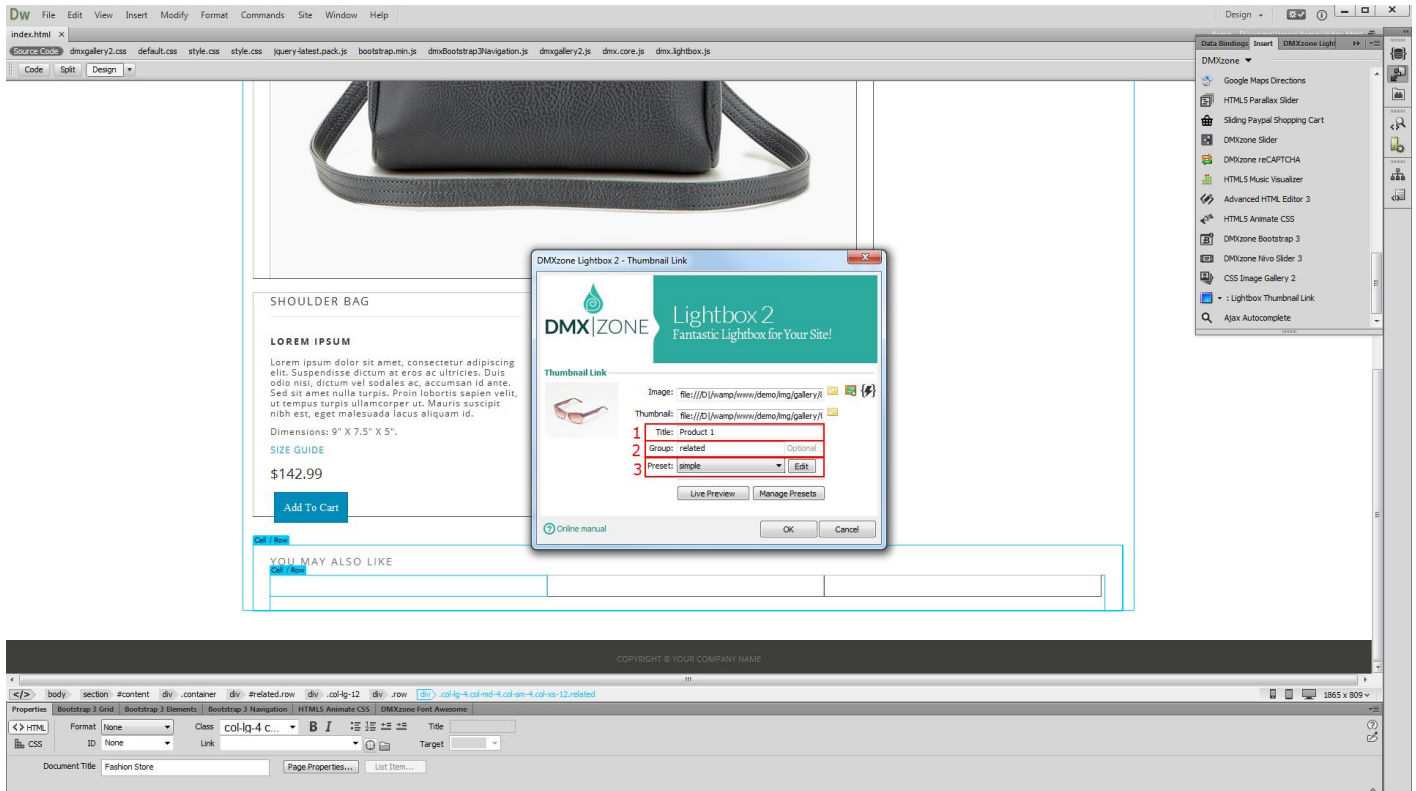
- Here you can choose whether to add your image and thumbnail by browsing to them or generate them using the built-in DMXzone resizer. Let's generate our big image and thumbnail, click the **add image button**.



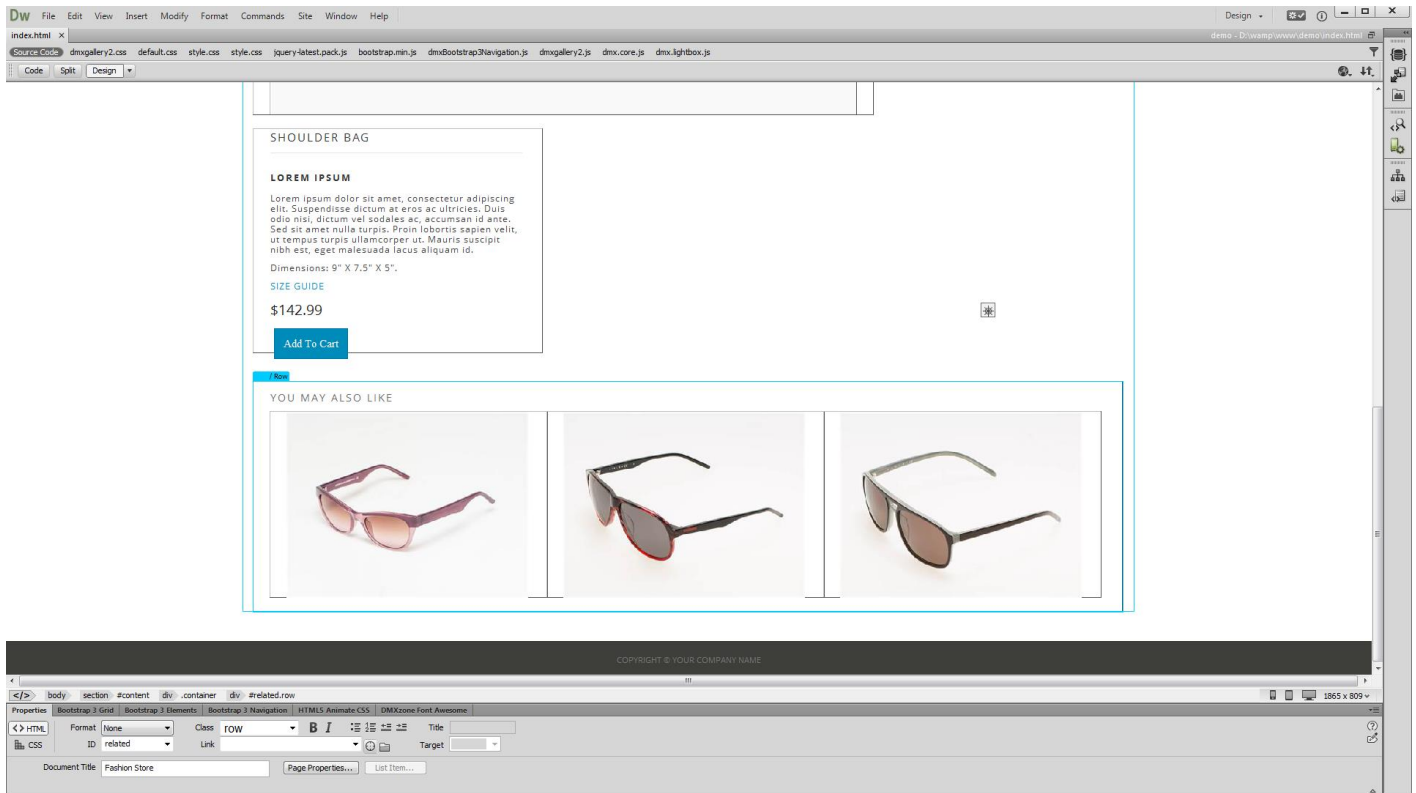
- Select the **image source (1)** and the **destination folder (2)**. Set the **big image size (3)** and the **thumbnail size (4)**. When you're done, click OK.



4. You can add a title for the **image (1)** and add it to a **group (2)**. Images placed in the same group, will then appear as a slideshow in the lightbox window so you can switch to the next or previous one, without closing the lightbox. Choose one of the **presets (3)** and click OK.

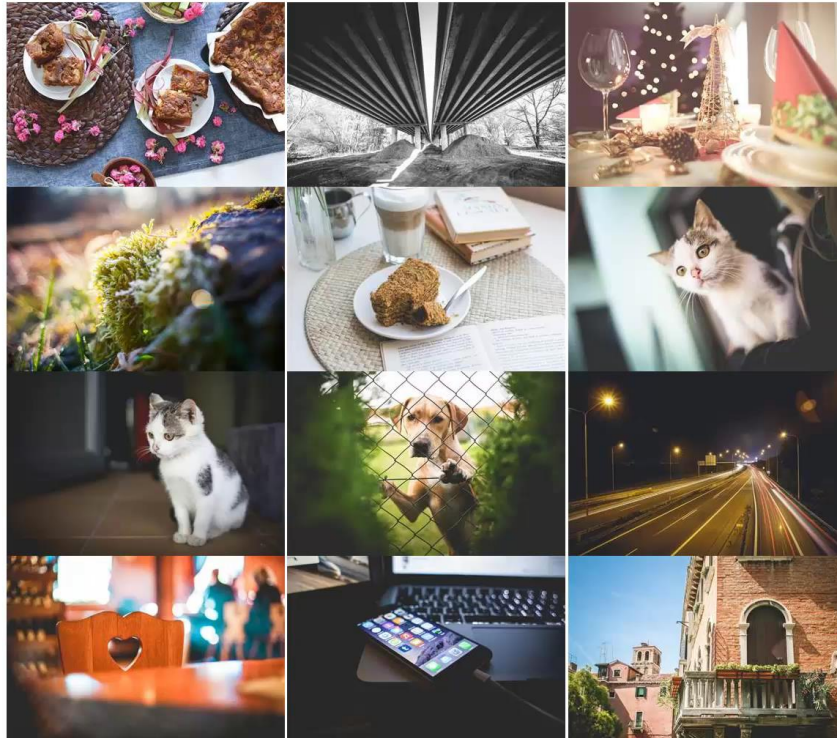


- You can add as many thumbnails as you want on your page. Now you can save and preview the results.



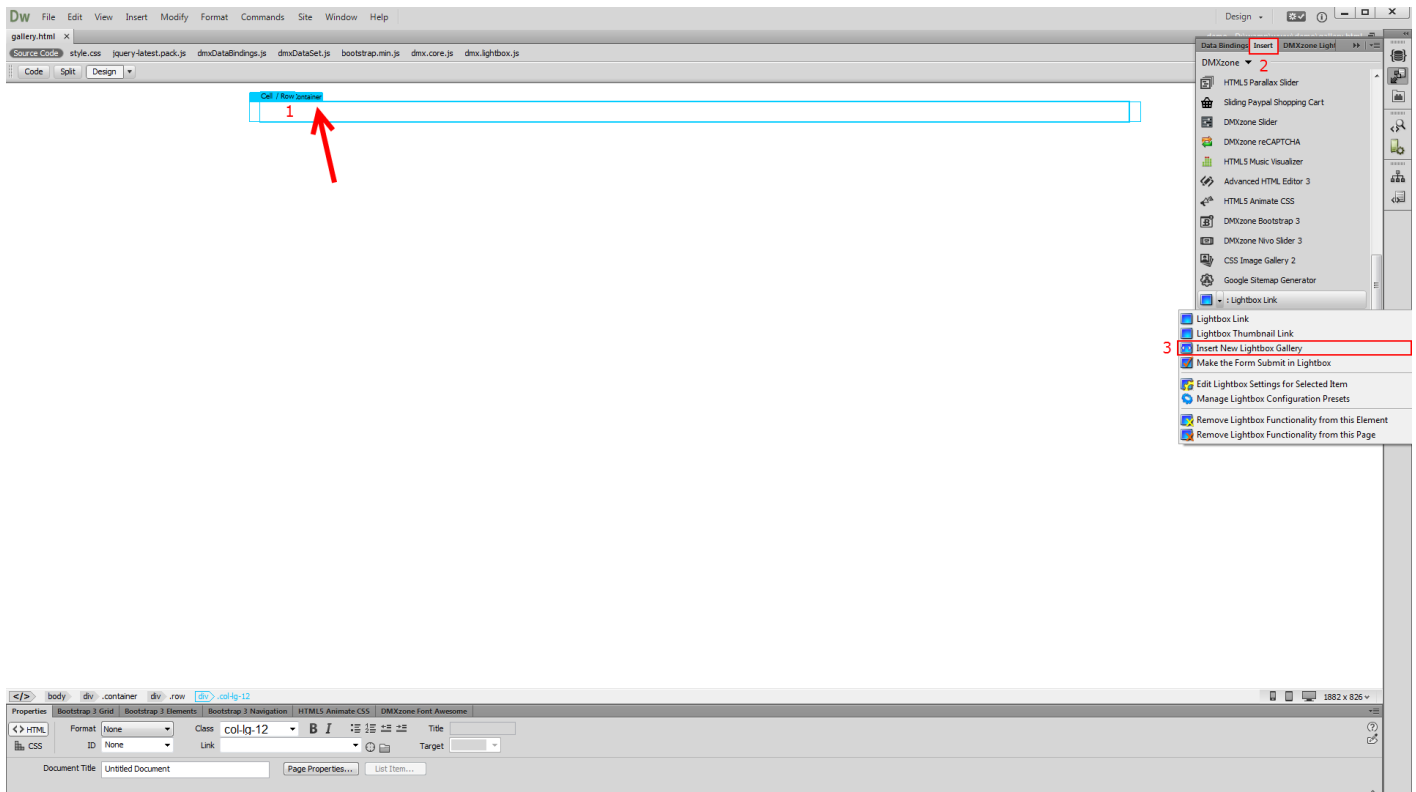
Advanced: Insert a Lightbox Gallery on a Page

In this tutorial we will show you how to insert a lightbox gallery on your page.
*You can also check out the [video](#).

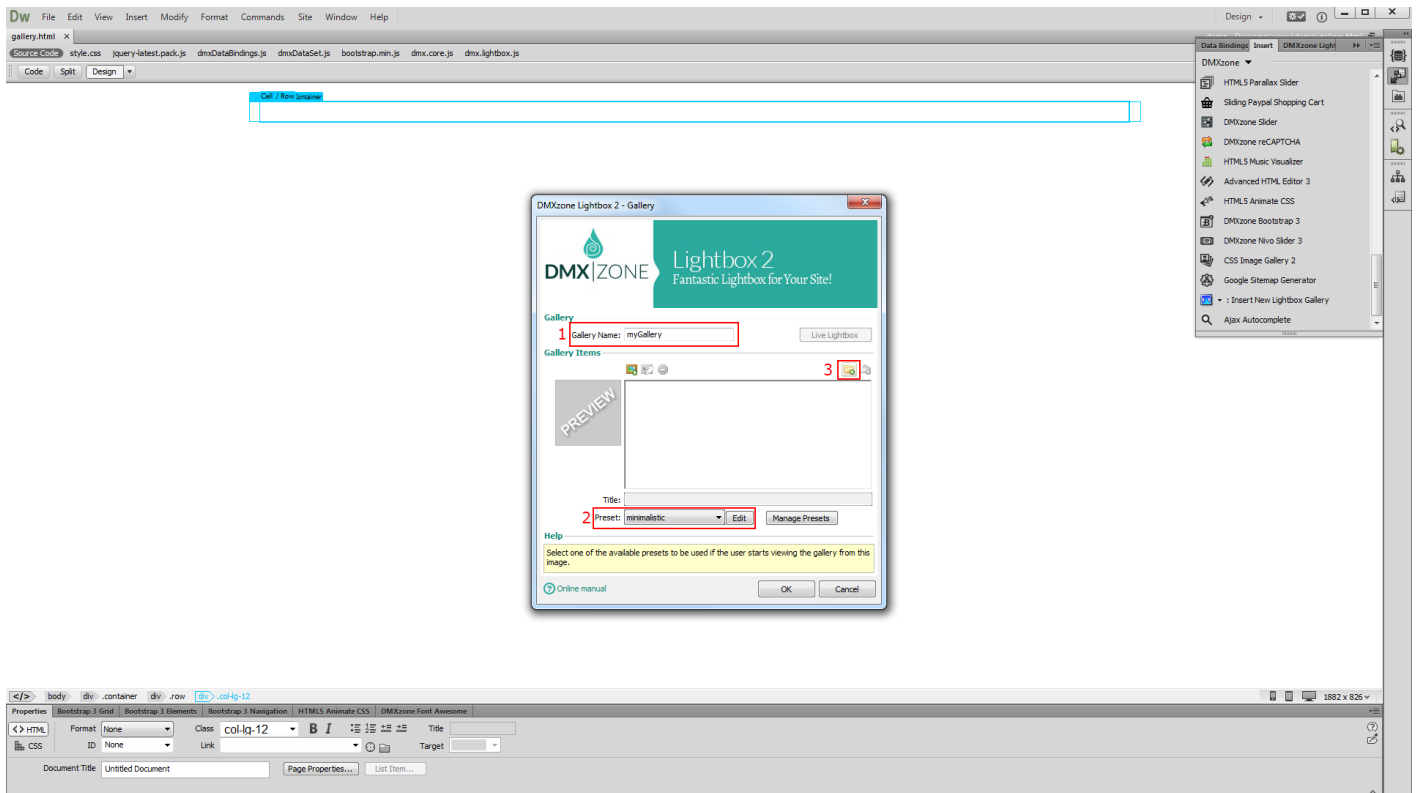


How to do it

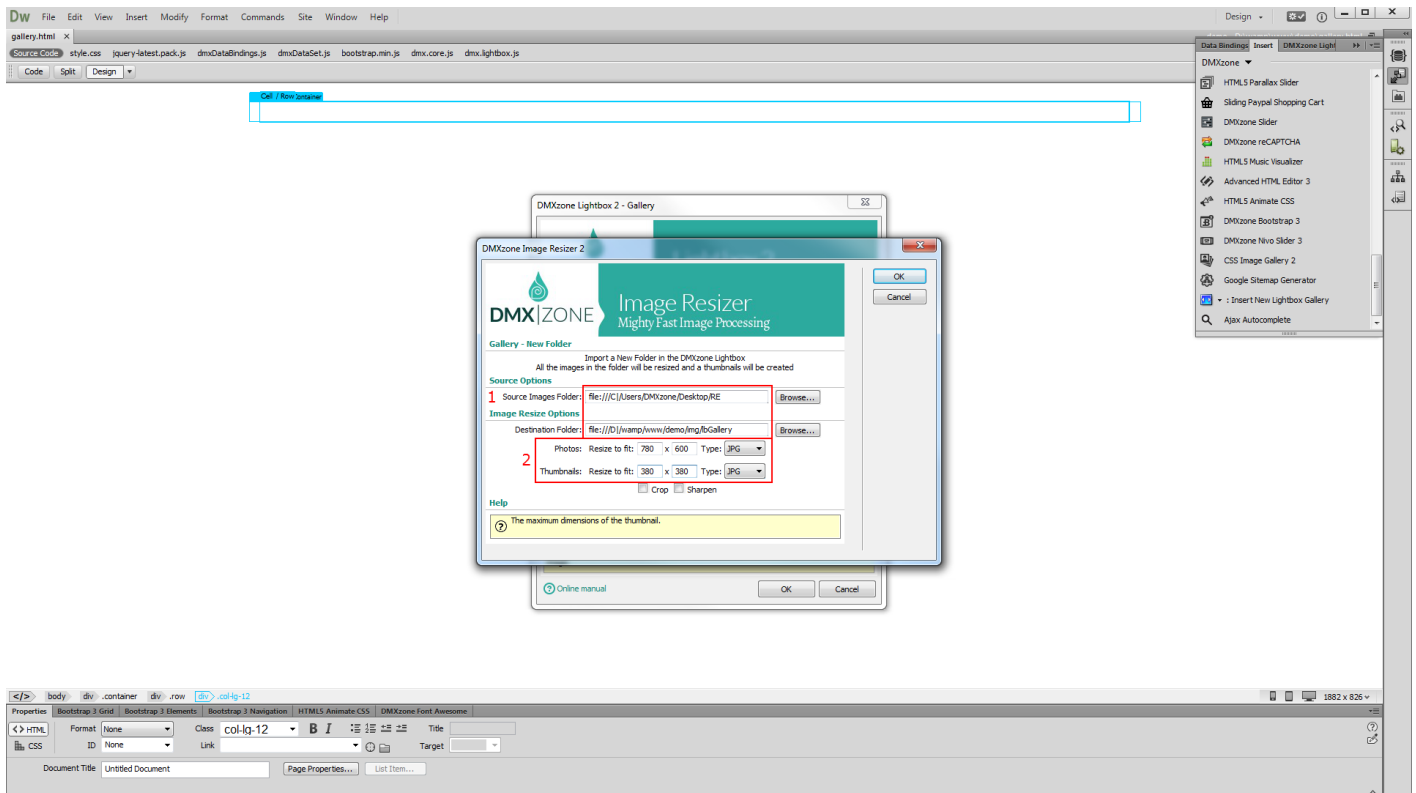
1. **Click on your page** where you want to insert the Lightbox gallery **(1)** and from the **insert panel (2)**, choose **insert new Lightbox gallery (3)**.



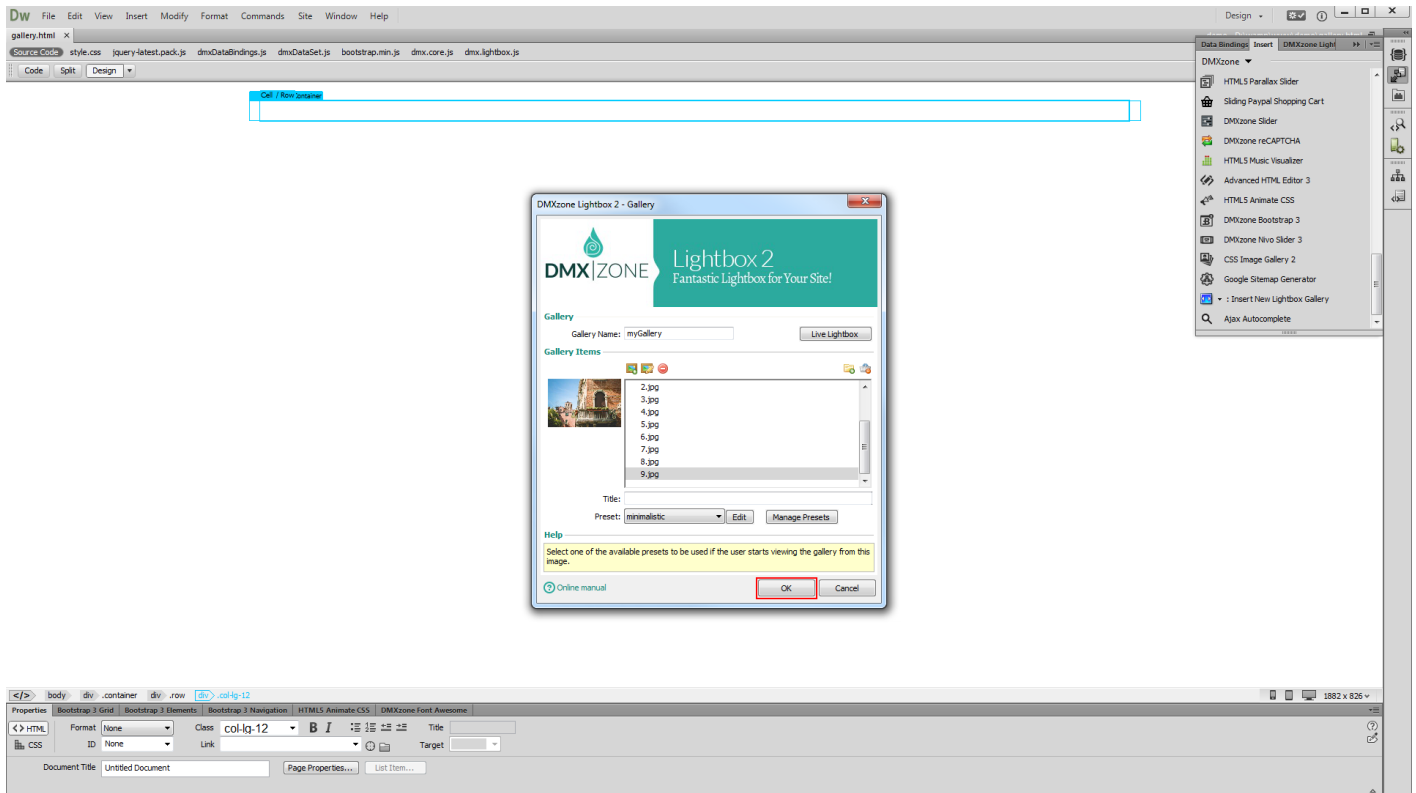
2. Enter **a name** for the gallery **(1)** select **a design preset (2)** and **add the images (3)**. We use the import folder with images option.



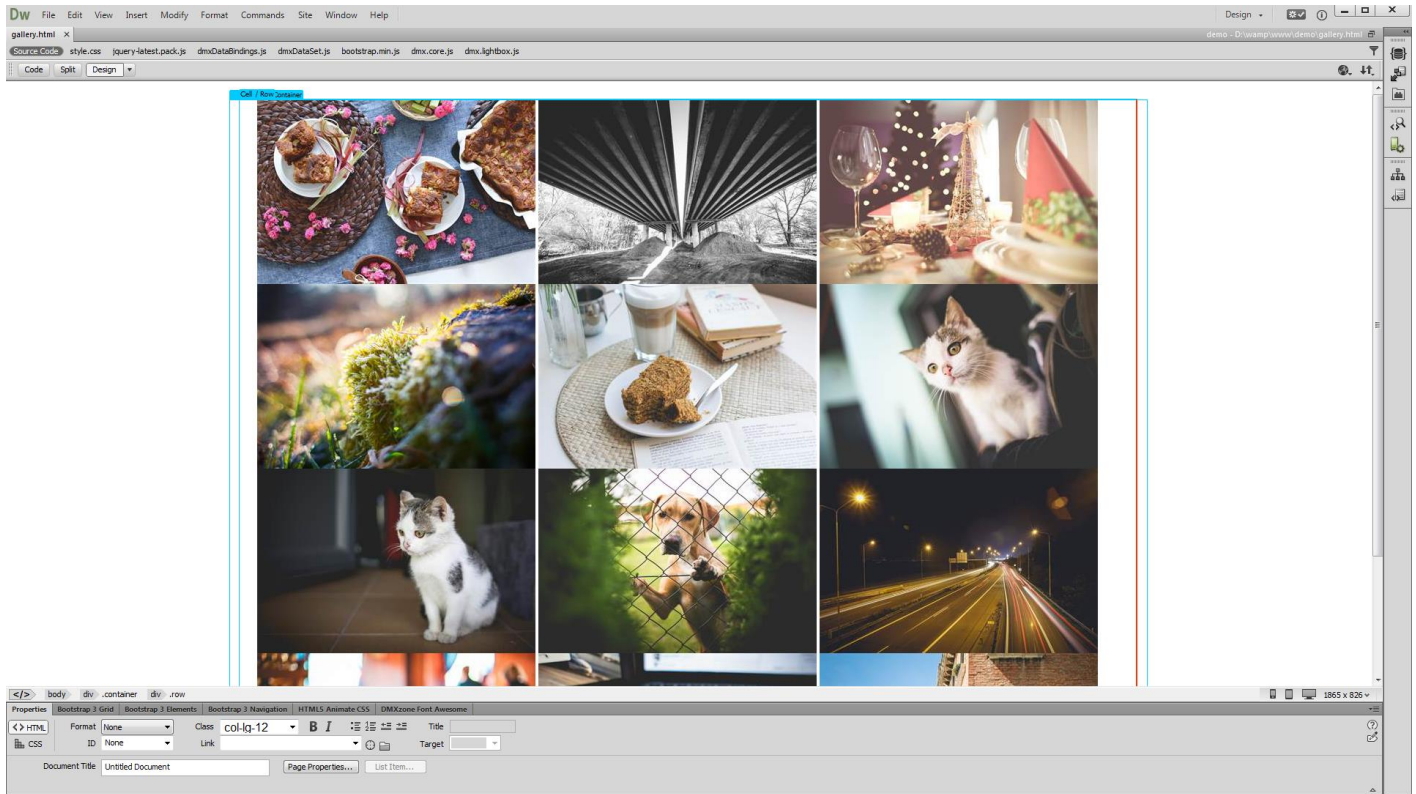
3. Select your **source images folder** and the **destination folder (1)**. Set the **thumbnails size** and the **big images size (2)**, and click OK.



- Our images were successfully resized and added into the gallery so we can close the lightbox gallery dialog now.



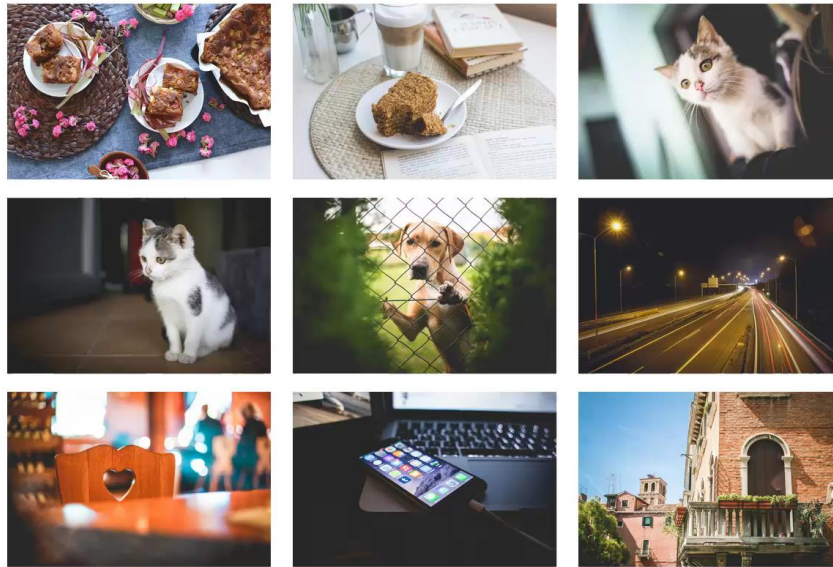
5. Now you can save your work and preview the results in the browser.



Advanced: Using DMXzone Lightbox 2 with Dynamic Data

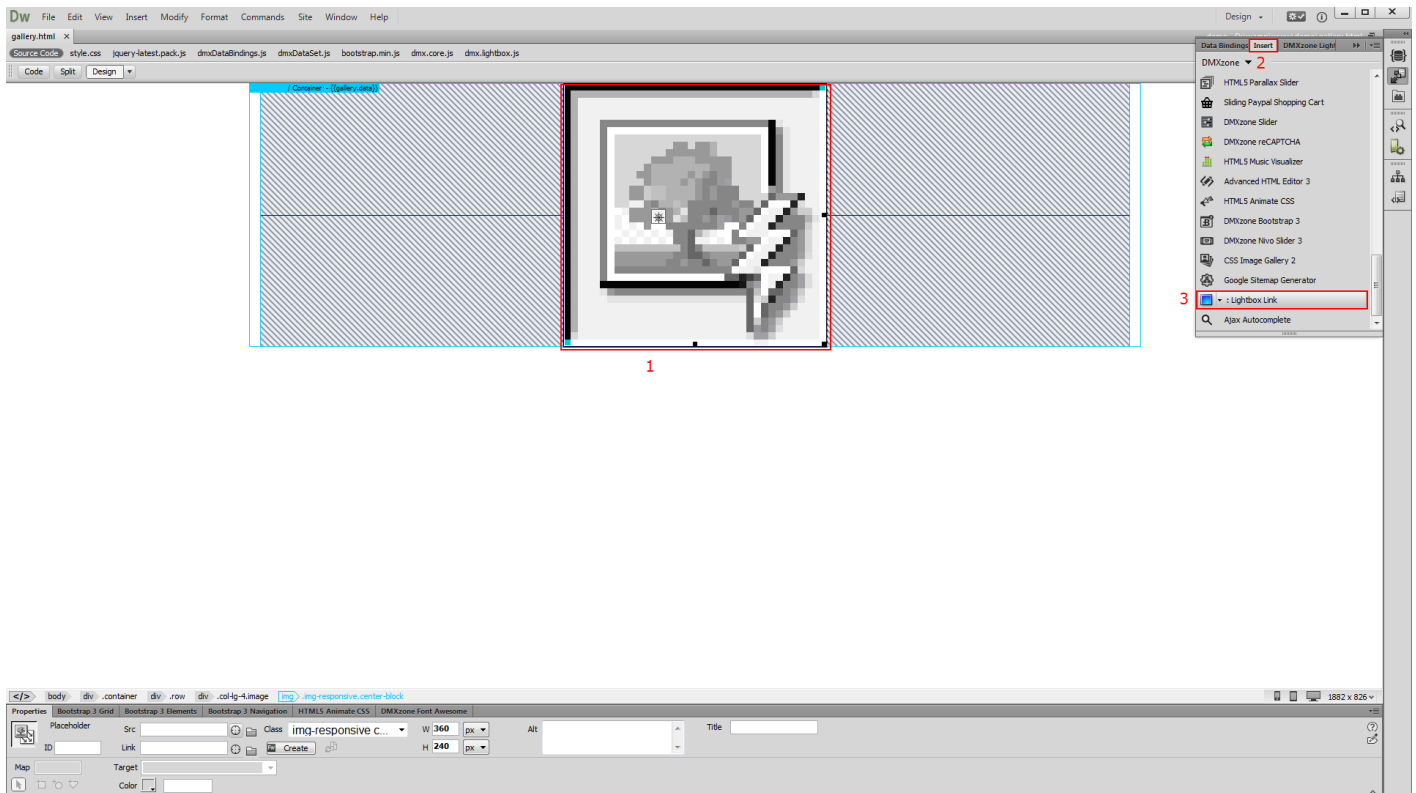
In this tutorial we will show you how to insert a Lightbox thumbnail link on your page, using [DMXzone Lightbox 2](#).

*You can also check out the [video](#).

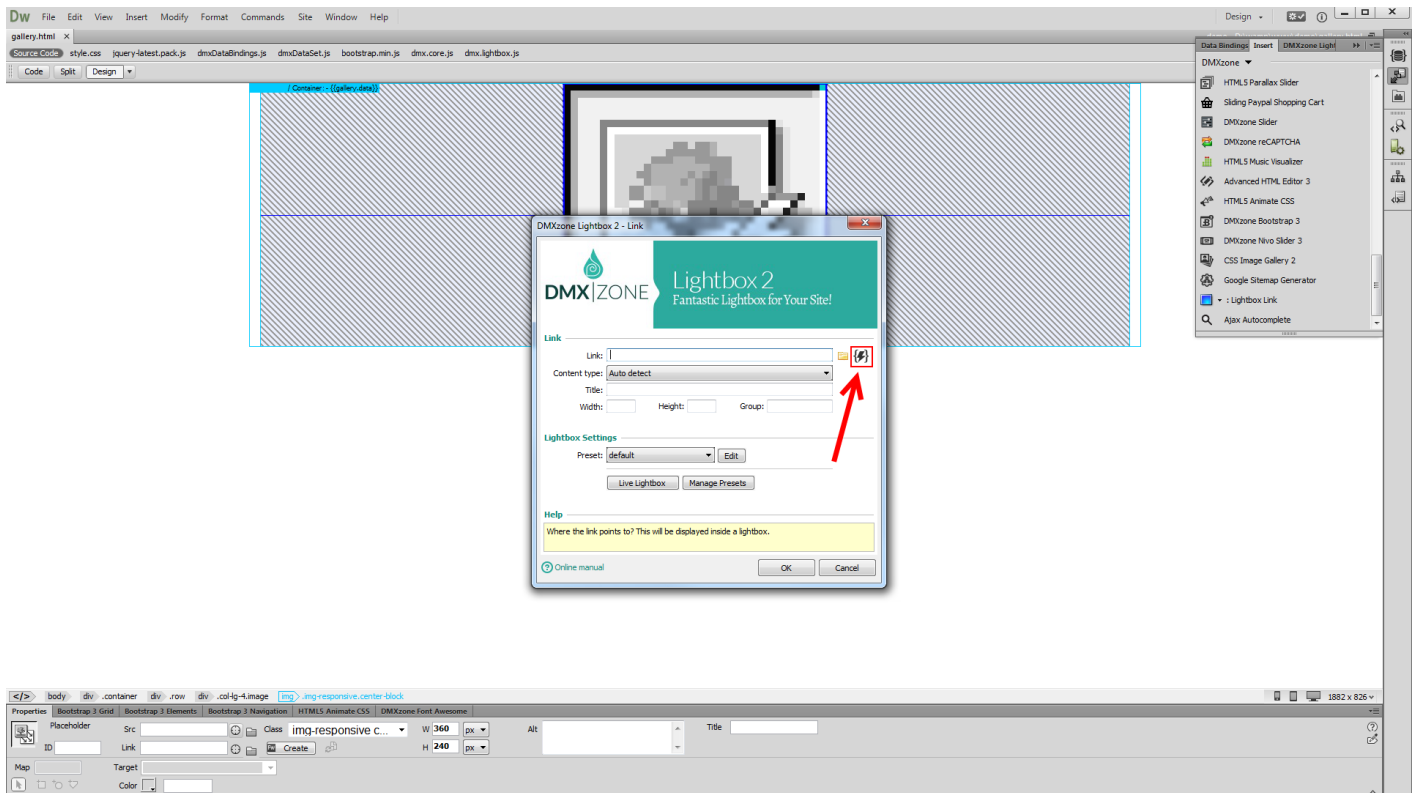


How to do it

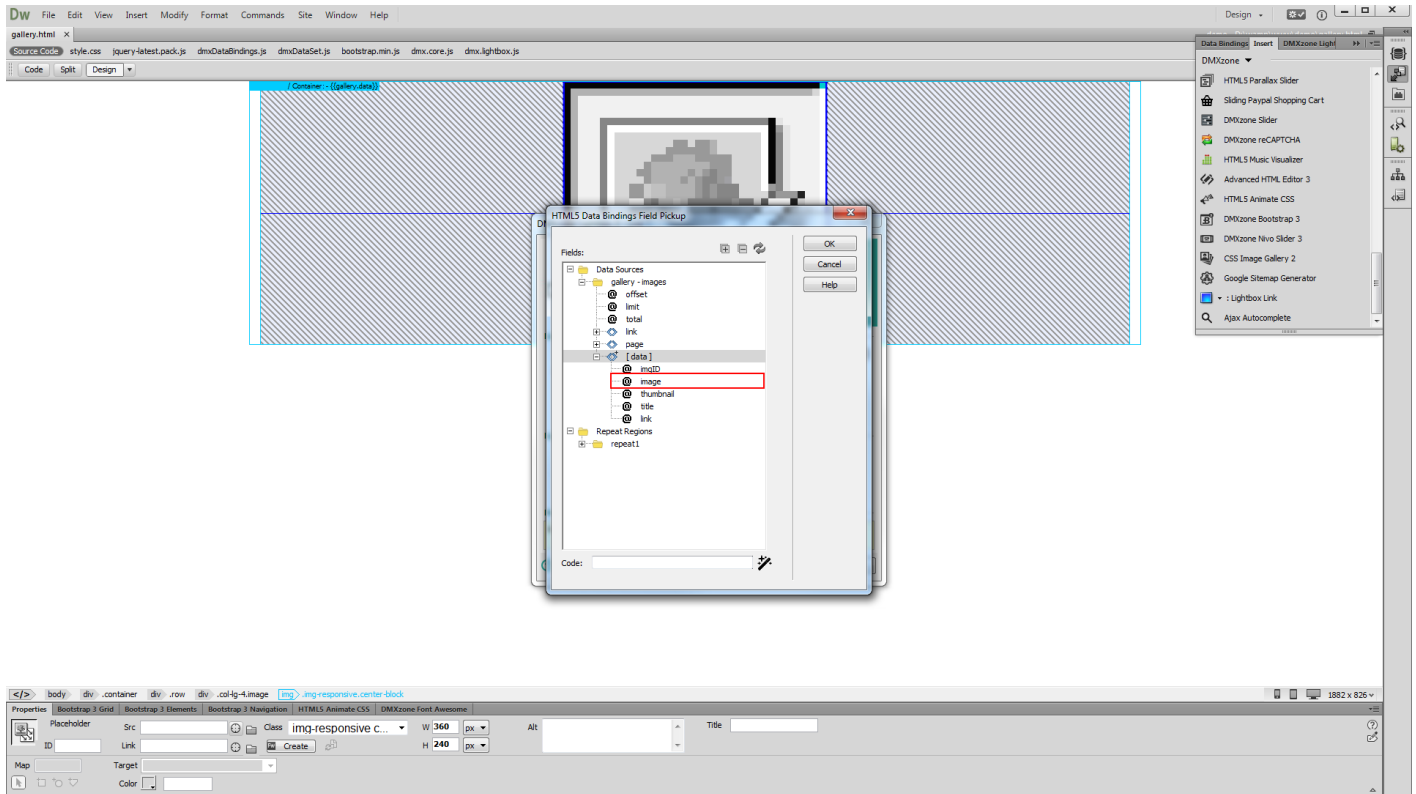
1. We created a data source and added a repeat region, which displays thumbnails on our page. We want to show big images when a thumbnail is clicked. In order to do that, select the dynamic thumbnail in the **repeat region (1)** and from the **insert panel (2)** choose the **Lightbox link option (3)**.



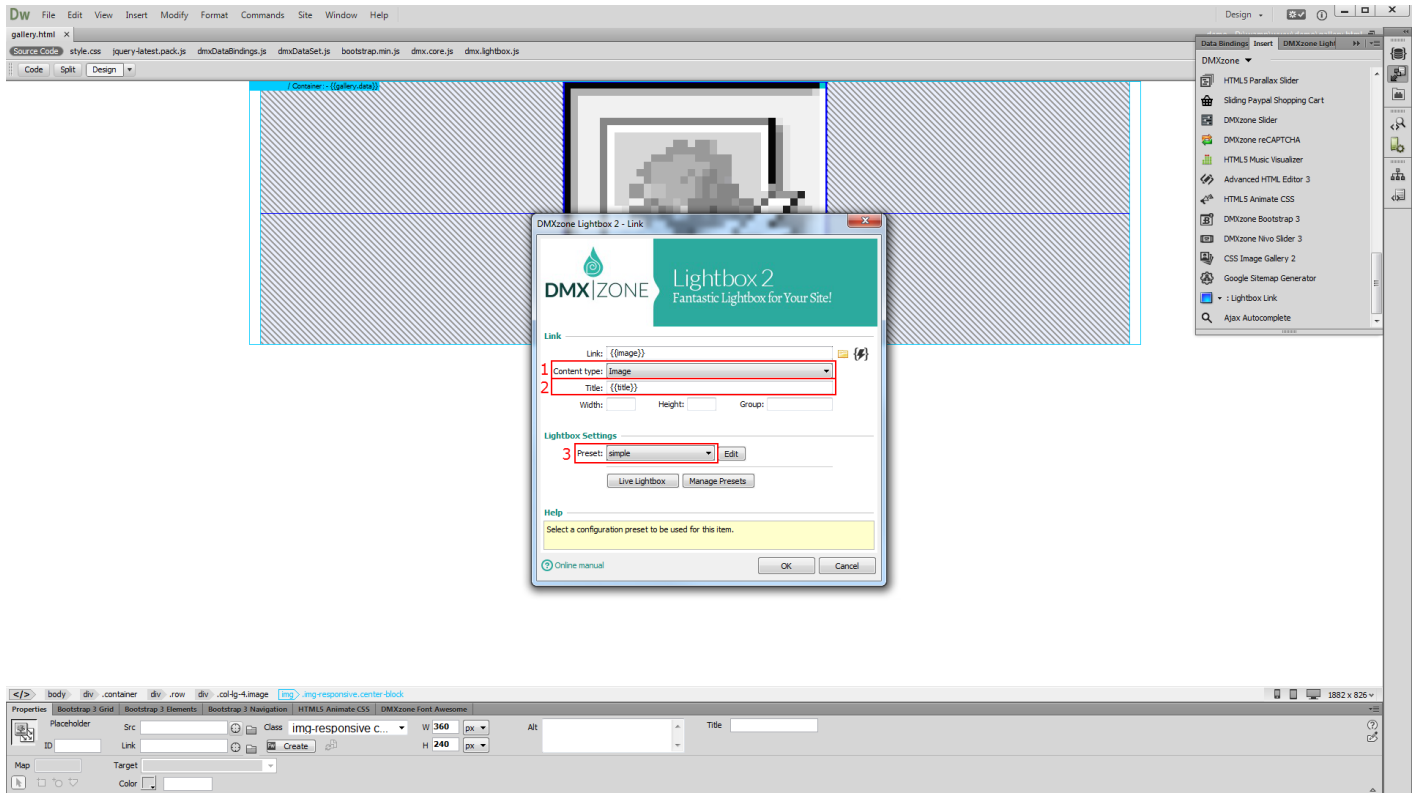
2. Click the dynamic data button in order to select the link that comes from your data source.



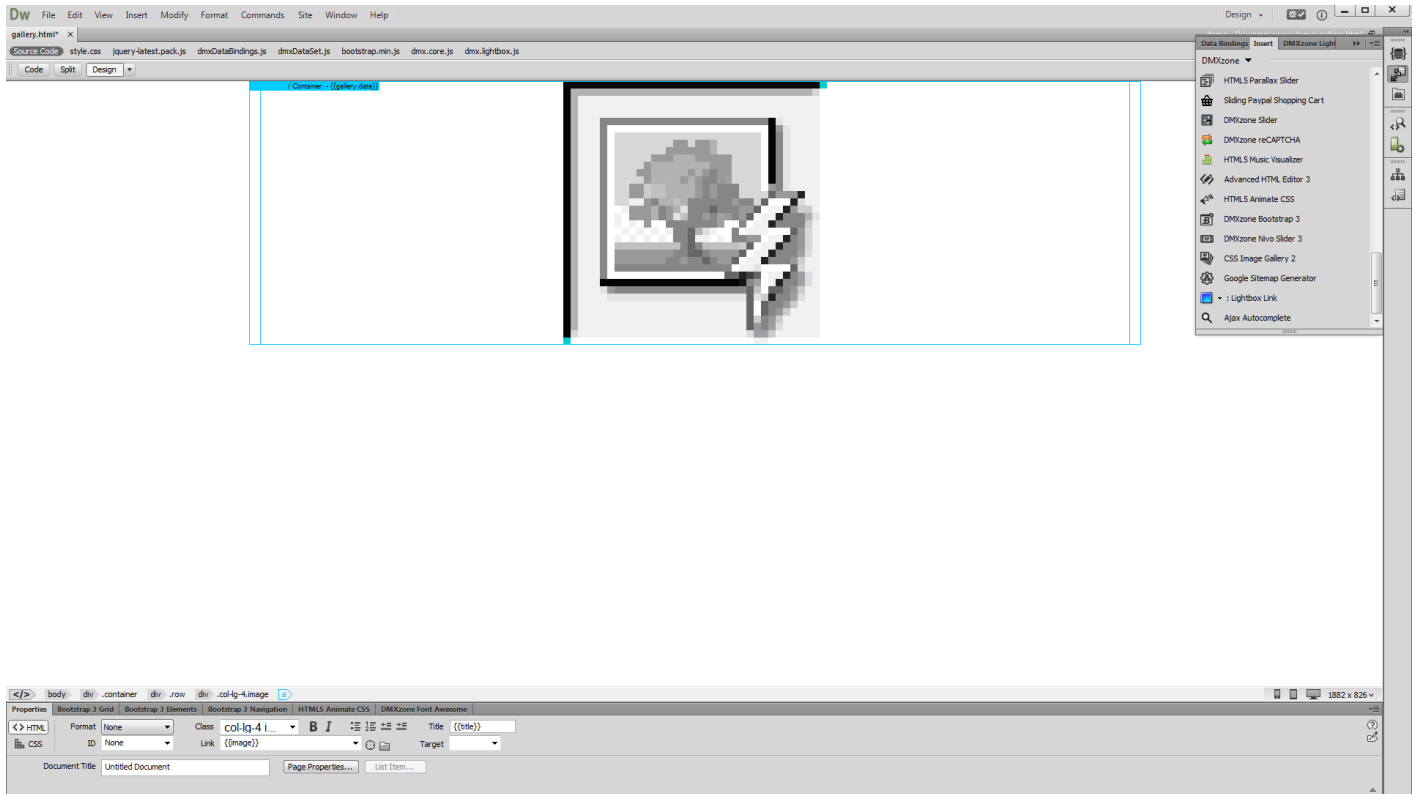
3. Select the data element that holds your links and click OK.



- Select the content type, in our case it's the **image option (1)**, enter a **title (2)** or use a data element from your data source that holds the images titles. You can enter it manually, as shown. Choose one of the **presets (3)** and click OK.



5. Now you can save and preview the results.



Video: Insert a Lightbox Link on a Page



With this [movie](#) we will show you how to insert a Lightbox link on your page using [DMXzone Lightbox 2](#).

Video: Insert a Lightbox Thumbnail Link



With this [movie](#) we will show you how to insert a Lightbox thumbnail link on your page, using [DMXzone Lightbox 2](#).

Video: Insert a Lightbox Gallery on a Page



With this [movie](#) insert a lightbox gallery on your page.

Video: Using DMXzone Lightbox 2 with Dynamic Data



With this [movie](#) insert a Lightbox thumbnail link on your page, using [DMXzone Lightbox 2](#).